

Urban Land Institute

Richard Koss
Director of Economics

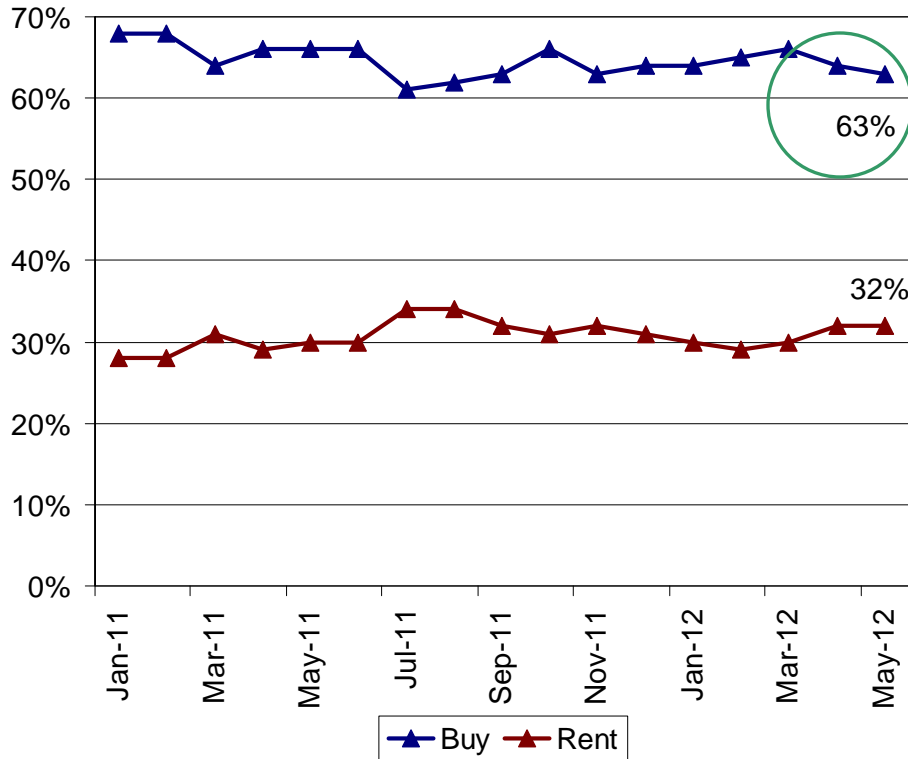
June 21, 2012

Disclaimer

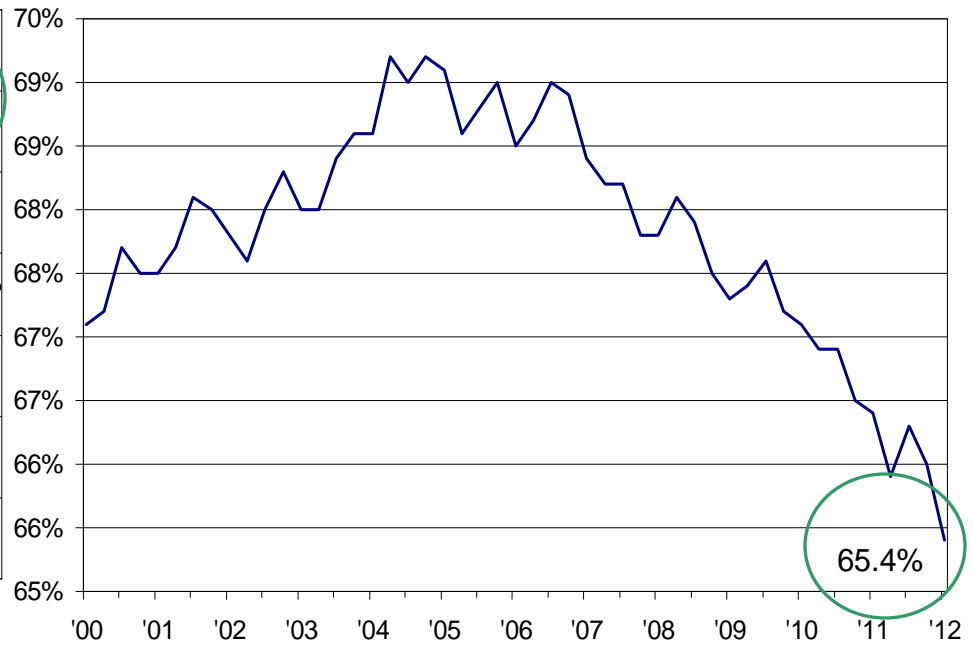
Opinions, analyses, estimates, forecasts, and other views of Fannie Mae's Economic & Strategic Research (ESR) group included in these materials should not be construed as indicating Fannie Mae's business prospects or expected results, are based on a number of assumptions, and are subject to change without notice. How this information affects Fannie Mae will depend on many factors. Although the ESR group bases its opinions, analyses, estimates, forecasts, and other views on information it considers reliable, it does not guarantee that the information provided in these materials is accurate, current, or suitable for any particular purpose. Changes in the assumptions or the information underlying these views could produce materially different results. The analyses, opinions, estimates, forecasts, and other views published by the ESR group represent the views of that group as of the date indicated and do not necessarily represent the views of Fannie Mae or its management.

Labor Market Strains Keep Potential Homeowners Cautious Despite Record Affordability

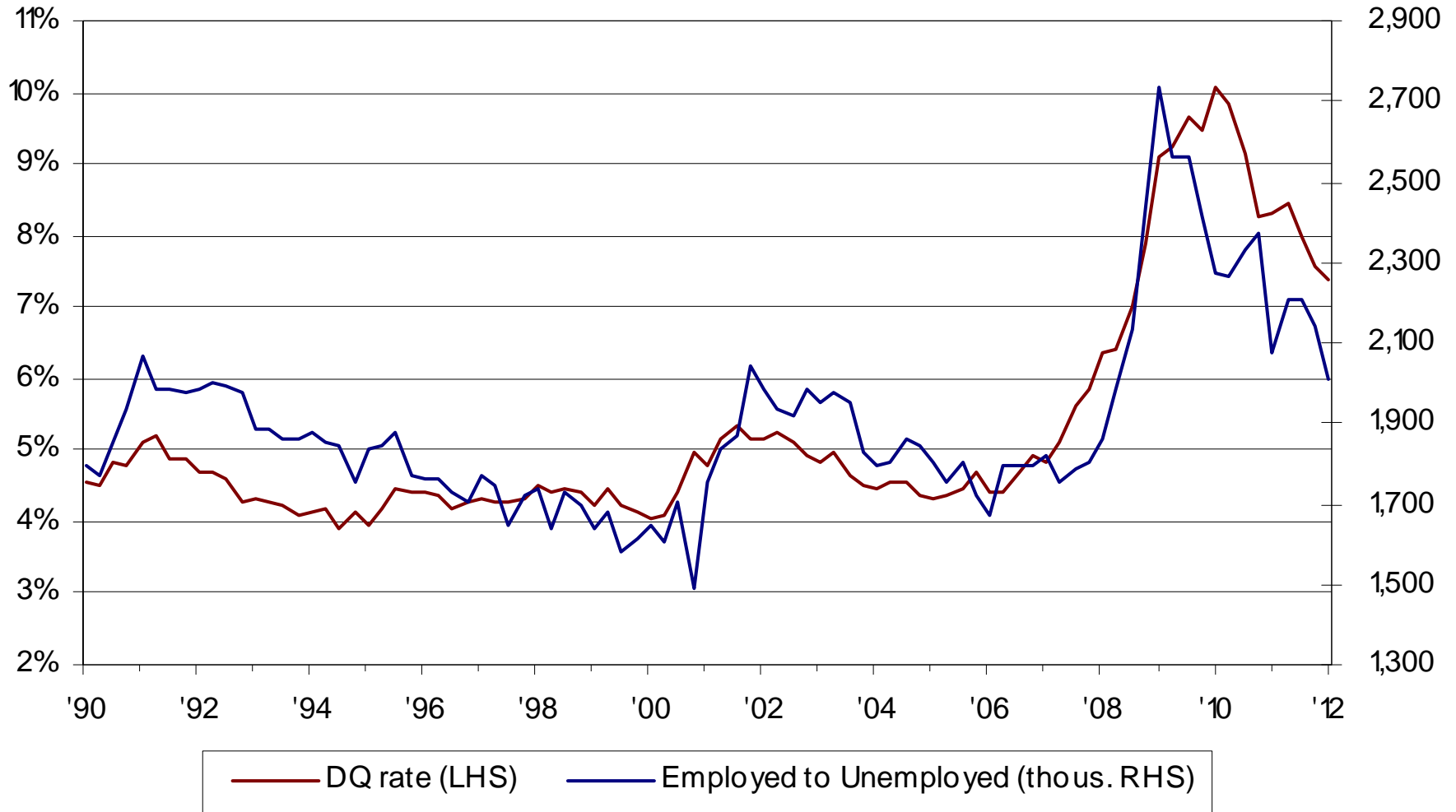
Share of Respondents Who say They Would Buy or Rent If They Were Going to Move They Would...



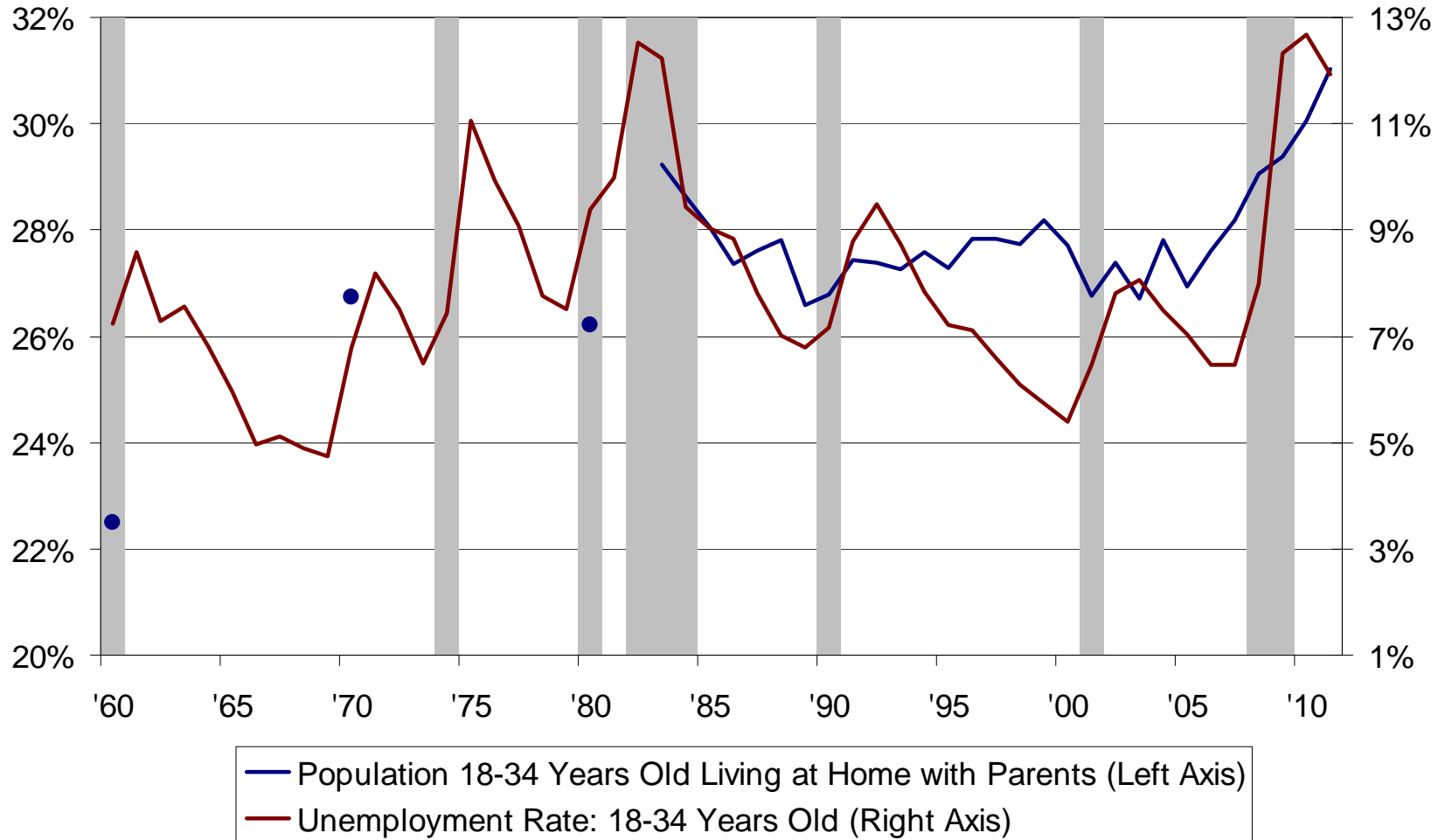
Homeownership Rate: United States (NSA, %)



Individuals Who Have Lost Their Homes Will Not Re-enter the Market for an Extended Period

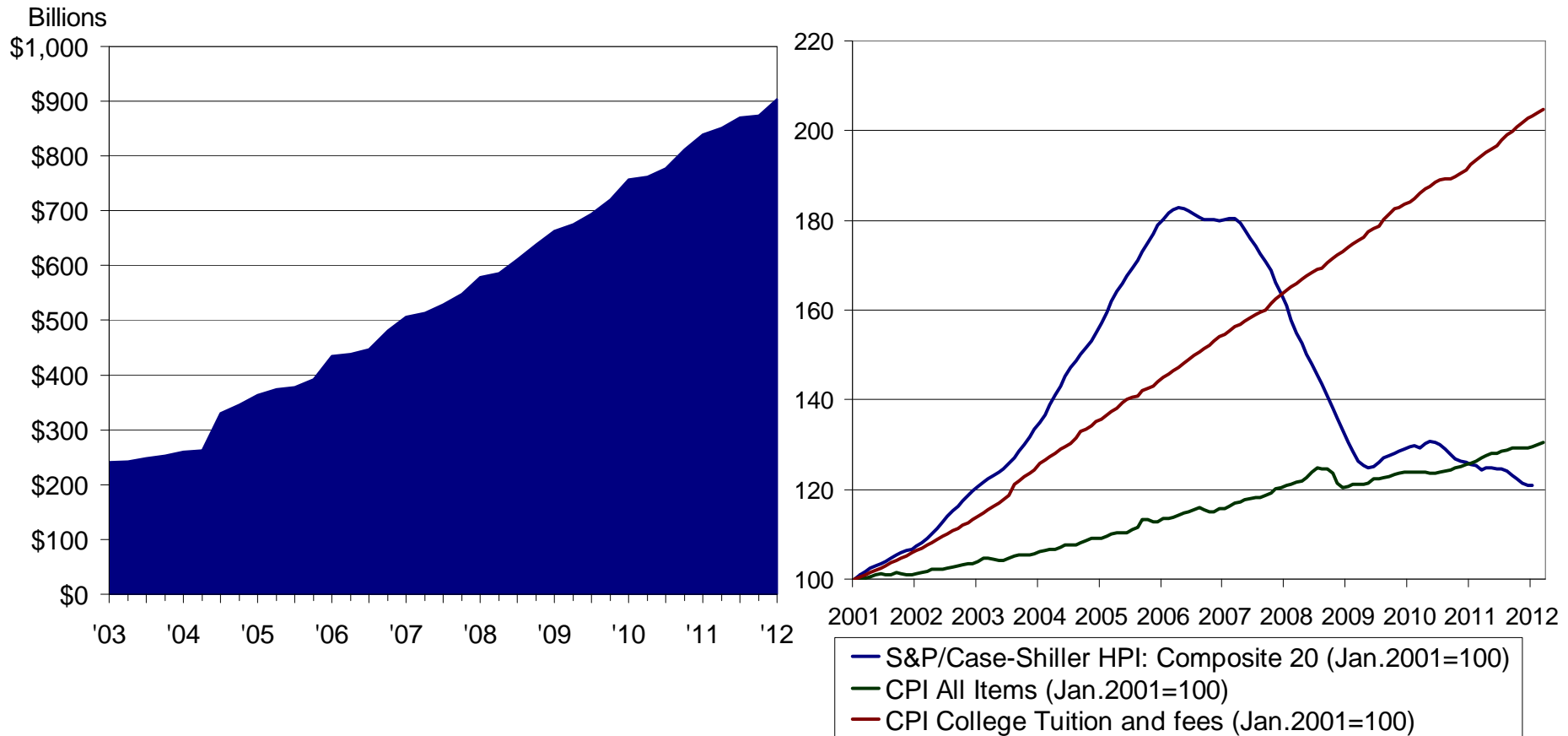


Our Young People Suffer from Both a Difficult Labor Market...



...and a Financial Struggle as Student Loan Debt Nears \$1 Trillion

Student Loan Debt Outstanding (EOP)



Contact Information

fanniemae.com/portal/research-and-analysis/

Richard Koss, Director of Economics

Fannie Mae

3900 Wisconsin Avenue, NW

Mail Stop 1H-2N/01

Washington, DC 20016

(o) 202-752-5296

richard_a_koss@fanniemae.com