

Randall Lewis/ULI Building Healthy Places Forum

PARTICIPANT LOOK BOOK



Photo: Market Creek Plaza and Chollas Creekside Trail

APRIL 18-19, 2022 | SAN DIEGO

In conjunction with the 2022 ULI Spring Meeting

Table of Contents

SPEAKERS & PANELISTS

Majora Carter	6
Narri Cooper	7
Juanita Hardy.....	8
Hasan Ikhata.....	9
Reginald Jones	10
Randall Lewis	11
Rachel MacCleery	12
Michele Vives.....	13
Tony Young.....	14

WALKING TOUR STATION GUIDES (Day 2)

Elizabeth Bustos	15
Tommy Edmunds.....	15
Ian Gill.....	15
Selina Castillo Hudgins.....	16
Max Hutcheson.....	16
Crystal Skerven	16
Cindy Sweeny	17
Selena Ellis-Vizcarra	17
Alex Waters	17

FORUM PARTICIPANTS

David Abraham, PhD.....	18
Aleiya Als	18
Kelly Annis	18
Alan Aschenbrenner	19
Michael Balsamo	19
Riley Bancroft	19
Steven Baumgartner.....	20
Michael Bloom, PE, ENV SP	20

Nour-Lyna Boulgamh20

Zaccary Bradt21

Scott Brideau21

Charles Brown21

Monique Brown22

Shelby Busó22

Beth Callender22

Miguel Castro23

Sheila Cedervall23

James Chase23

Kacey Cordes24

Mary Corley24

Liliana Diaconu24

Jim Durrett.....25

Sally El Sayed25

Jill Esterbrooks.....25

Miluska Franco26

Keo Frazier26

Clayton Garrett.....26

Luis Guajardo.....27

Jeff Handlin.....27

Valarie Jacobs Hapke27

William Zeh Herbig, AICP28

Jude Hernandez28

Julie Hiromoto28

Steve Johnston29

Richard Joy.....29

Kurt Kicklighter29

Heidi Kimball.....30

Jeff Kingsbury30

Sandra Kulli.....30

Peggy Sue Lane.....31

Todd Lerner31

Mark Lewis.....31

Misty Loocke.....32

Bryan Luu.....32

Joanna Mack.....33

Jose Bodipo-Memba.....33

Brad Molotysky.....33

Donald Monti.....34

James A Moore, PhD, AIA, AICP, CRE, LEED AP BD+C, ENV SP.....34

Leroy Moore34

Rachel Moscovich35

Beth Nilsson.....35

Riki Nishimura, AIA, LEED AP35

Matt Norris36

Dean Nucich36

Victoria Oestreich36

Cindy Park.....37

Shannon Paterson37

Neal Payton37

Heather Personne.....38

Steve PonTell38

Elise Purtiz38

Lauren Racusin39

Lacy Rice39

Amelie Rives39

Ricshawn Adkins Roane40

Elizabeth Rose40

Paul Runkle40

Thad Rutherford41

Gabriel Sapuay.....41

Jolene Saul.....41

Charles Schilke, AM, JD, CRE, FRICS.....42

Diana Schoder.....42

Kaela Schramm.....42

John Semcken.....43

Charu Singh.....43

Sindu Sivayogam.....43

Teri Slavik-Tsuyuki44

Melani Smith, AICP44

Olivia Stafford.....44

Anne Stedler45

Kevin Stolarick, PhD.....45

Belinda Sward.....45

Rives Taylor.....46

Erik Tilkemeier46

Malee Tobias46

Denise Truong47

Beth Tucker, AICP47

Elizabeth Van Horn.....47

Jon Tuley.....48

Jean Walcher48

Andrew Watkins48

Emma West49

Carolyn White, CPESC CERP.....49

Dana White, CPA, MSRE49

Aaron Williams50

Tom Woliver50

Lee Wong.....50

Allison Wood51

Sandy Young.....51

Tiffany Young.....51

Emily Zhang51

SPEAKERS & PANELISTS

Majora Carter

Senior Director

Groundswell, Inc.

Bronx, NY

majora@majoracartergroup.com

Majora Carter is a real estate developer, urban revitalization strategy consultant, MacArthur Fellow and Peabody Award winning broadcaster. She's responsible for the creation of numerous economic development, technology inclusion & green-infrastructure projects, policies and job training & placement systems. She is a lecturer at Princeton University's Keller Center, and serves as Editor & Senior Producer at GROUNDTRUTH, Groundswell's communications platform for telling stories of people building community power.

Carter applies her corporate consulting practice focused on talent-retention to reducing Brain Drain in American low-status communities. She has firsthand experience pioneering sustainable economic development in one of America's most storied low-status communities: the South Bronx.

She and her teams develop vision, strategies and the type of development that transforms low-status communities into thriving mixed-use local economies. Her approach harnesses capital flows resulting from American re-urbanization to help increase wealth building opportunities across demographics left out of all historic financial tide changes. Majora's work produces long term fiscal benefits for governments, residents, and private real estate developments throughout North America.

She has served on the boards of the US Green Building Council, Ceres, The Wilderness Society, and the Andrew Goodman Foundation.

Majora was born, raised and continues to live in the South Bronx. She is a graduate of the Bronx High School of Science (1984), Wesleyan University (1988 BA, Distinguished Alum) and New York University (MFA). After establishing Sustainable South Bronx (2001) and Green For All (2007), among other organizations, she opened this private consulting firm (2008) - which was named Best for the World by B-Corp in 2014.



Narri Cooper

Director, Community Relations and Partnerships

Jacobs Center for Neighborhood Innovation

San Diego, CA

ncooper@jacobscenter.org



Juanita Hardy

Managing Principal

Tiger Management Consulting Group LLC

Silver Spring, MD

juanita_hardy@msn.com

Juanita is Managing Principal at Tiger Management Consulting Group. She established the global consulting firm in 2006 after retiring in 2005 from a 31-year career with IBM. She was featured among 13 women in the book, *Montgomery County Women Making It* (2011). She serves on the Board of Directors of Women’s Council on Energy and the Environment and was the first chair of its Advisory Council. Her papers have been featured in *The Roadmap to 2020* published by Quantum Leaps, *Enterprising Women* magazine, and *The Peking University Business Review*. She earned her bachelor’s degree in Mathematics and did graduate work in Operations Research at George Washington University. She has participated in numerous IBM education programs and is an alumnus of the University of Maryland Baltimore County ACTiVATE Program for women entrepreneurs in technology.



Hasan Ikhata

CEO

San Diego Association of Governments (SANDAG)

San Diego, CA

hasan.ikhata@sandag.org

Considered one of the preeminent transportation planning experts in the nation, Hasan Ikhata is the Executive Director of the San Diego Association of Governments (SANDAG). SANDAG is the leading research, planning, and transportation agency for the San Diego region. The agency builds consensus; makes strategic plans; obtains and allocates resources; plans, engineers, and builds public transportation, and provides information on a broad range of topics pertinent to the region's quality of life. Agency policymakers are elected officials from each of the area's 18 cities and the county.

Mr. Ikhata leads a staff of about 350 professionals who develop public policy initiatives for elected officials on numerous issues encompassing population growth, transportation, environmental management, economic development, municipal finance, binational coordination, and public safety.

Mr. Ikhata has over 30 years of public and private sector transportation planning experience in the region. As Executive Director of SANDAG, he directs day-to-day operations of the agency and implements policies set by its governing board. In addition, Mr. Ikhata is the Chief Executive Officer of the SANDAG Service Bureau, the nonprofit public benefit corporation chartered by SANDAG.

Mr. Ikhata holds a Bachelor's and a Master's degree in Civil and Industrial Engineering from Zaporozhye University in the former Soviet Union; a Master's degree in Civil Engineering from UCLA, and a PhD Candidacy in Urban Planning and Transportation from the University of Southern California. Prior to joining SANDAG in 2018, Mr. Ikhata worked for Southern California Association of Governments (SCAG), Los Angeles County Metropolitan Transportation Authority (MTA) and South Coast Air Quality Management District (SCAQMD). Mr. Ikhata is an adjunct professor in the business school at California State University, Northridge.



Reginald Jones

President & CEO

Jacobs Foundation and Jacobs Center for Neighborhood Innovation

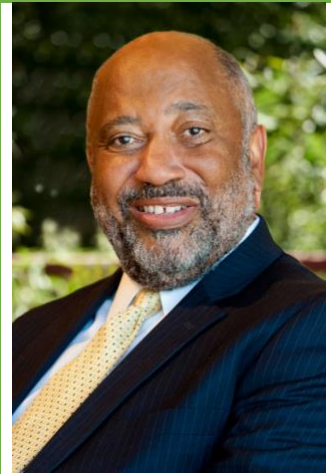
San Diego, CA

rjones@jacobscenter.org

Overseeing the organization’s mission and goals since 2012, Reginald Jones is president and chief executive officer of the Jacobs Center for Neighborhood Innovation and the Jacobs Family Foundation. Through the Jacobs Center for Neighborhood Innovation, Jones leads efforts to develop enduring partnerships that create equitable, community-driven change in Southeastern San Diego, focusing on physical development and economic opportunity. He works with culturally diverse residents, organizations, political leaders and private entities to foster understanding of the organization’s intent, seek input and build collaboration for ambitious neighborhood revitalization efforts. Current projects include CONNECT ALL @ the Jacobs Center, the region’s first low to moderate income and diversity-focused business accelerator program. A partnership between the City of San Diego, the Jacobs Center for Neighborhood Innovation and CONNECT w/ San Diego Venture Group, the program guides startups that want to grow rapidly with the support they need to be successful. Prior to his work in San Diego, Jones served as president of the Chicago-based Steans Family Foundation, a philanthropy committed to revitalizing North Lawndale, a disinvested community on Chicago’s west side.

Jones’ leadership in philanthropy extends to serving as a board member for the Museum of Photographic Arts, advisory board member for Mainly Mozart and trustee with the Steans Family Foundation. He has served on the board of the Council on Foundations — for which he chaired the Family Philanthropy committee, Grassroots Grantmakers — as co-chairman, and the Lake County (Illinois) Community Foundation.

Jones is a frequent presenter on topics of philanthropy and placed-based driven approaches for community change. In 2019, Jones was honored with the San Diego METRO Magazine’s Men of Influence Award for his leadership in supporting innovative, practical strategies for community change in Southeastern San Diego. He is currently an Aspen Institute-Neighborhood Funders Group Philanthropy Forward Fellow.



Randall Lewis

Executive Vice President, Marketing

Lewis Management Corp.

Upland, California

randall.lewis@lewismc.com

Randall Lewis oversees the sales and marketing operations of the Company. Randall received his B.A. from Claremont McKenna College. He is regarded as an industry leader in promoting the arts, education, healthy living and sustainable development initiatives. He has been President of the Inland Empire Arts Foundation, Secretary of the Los Angeles County Citizens Planning Council, director of the HomeBuilder’s Council, and national director of the National Association of HomeBuilders. Randall was named in the Los Angeles Times 2006 “West 100” list as one of the top 100 influential people in southern California. He has also received the California Business Properties Association Champion of the Industry Award and has been inducted into the California Building Industry Association Hall of Fame. Randall is a long time ULI member as well as a Governor of the ULI Foundation. Randall serves on several executive boards, including the USC School of Policy, Planning and Development, the UCLA School of Public Policy, Loma Linda University Medical Center’s Orthopedic and Rehabilitation Institute Advisory Council, Cal Poly Pomona’s National Development Council, and co-chairs the San Bernardino County Alliance for Education. He is recognized as an expert in the real estate industry and is frequently quoted in various newspapers, magazines, and trade journals. Randall has over 30 years of experience in the real estate industry.



Rachel MacCleery

Senior Vice President, Content

Urban Land Institute

Washington, DC

Rachel.MacCleery@uli.org

Rachel MacCleery is senior vice president at the Urban Land Institute, where she leads the organization’s Building Healthy Places Initiative and other programs. Under Building Healthy Places, Ms. MacCleery is spearheading ULI’s efforts to leverage the power of ULI’s global networks to shape projects and places in ways that improve the health of people and communities. The Initiative is working to advance understanding of and action on connections between the built environment and health. Rachel has extensive knowledge of land use, environment and sustainability, social equity, and infrastructure policy and practice issues. Rachel has a Masters Degree in Public Administration and Urban and Regional Planning from the Woodrow Wilson School at Princeton University. She speaks Mandarin Chinese and lives in Washington DC.



Michele Vives

President

Douglas Wilson Companies

San Diego, CA

mvives@douglaswilson.com

In her role as President, Ms. Vives provides real estate development and advisory services for Douglas Wilson Companies and its clients. For DWC’s new Senior Living division, she is responsible for development, procurement, and project management of a portfolio expected to reach 10 properties in the Western states. Her Advisory Services clients look to her for confidential, strategic counsel and the advancement of complex, high value projects.

In her career, Ms. Vives has been directly involved in the development of over 3 million square feet of master planned communities, office, retail, hotel, and senior living projects with a combined value of over \$1 billion. Her experience includes: project feasibility analysis and due diligence, land procurement, community outreach, entitlement processing, contract negotiations, business development, and proposal management. She is known for her ability to problem-solve and reach consensus when working with government and regulatory staffs. Her command of budgets, timelines, and stakeholder relationships extends across all market segments.

Prior to joining DWC, Ms. Vives acted as Development Manager for a venerable San Diego architectural firm where she managed all aspects of predevelopment activity. In this role, she oversaw procurement, proposal management, project feasibility and due diligence, community outreach, entitlement processing, and contract negotiations. During her tenure as Business Development Manager for a major developer across the Western United States, she authored over 40 developer-led P3 real estate proposals that led to the construction of 1.8 million square feet of office, research, residential, and retail projects.

Ms. Vives earned her Bachelor of Science in Industrial Psychology from Illinois State University and her Bachelor of Science in Accounting from the University of Phoenix.



Tony Young

CEO / President

Civic Link Strategies / RISE San Diego

San Diego, CA

tony.youngsd@gmail.com

Tony Young is committed to public service. He served as policy advisor to elected officials Congressman Jim Bates and County Supervisor Leon Williams. For a decade, he was an educator for the San Diego Unified School District before serving as Chief of Staff to Councilman Charles Lewis. Subsequently, he was elected to the San Diego City Council, where he served as the first Council President Pro Tem and two consecutive terms as Council President. He chaired essential committees including: Budget and Finance, Rules, Public Safety & Neighborhood Services, and Audit.

Mr. Young has served on various boards including: San Diego Association of Governments (SANDAG), Metropolitan Transit System (MTS), San Diego County Regional Airport Authority, San Diego County Reinvestment Task Force, San Diego Workforce Partnership, and the League of California Cities.

Post-City Hall, Mr. Young joined the American Red Cross San Diego/Imperial County Chapter as Chief Executive Officer. Under his leadership, the Red Cross created collaborative relationships with private and nonprofit businesses, government entities, and community organizations to better facilitate disaster and emergency preparedness plans on a regional level.

In 2014, Mr. Young founded two companies: Civic Link Strategies, a public affairs firm which provides strategic consultation regarding government relations and community engagement, and RISE San Diego, a nonprofit organization focused on civic engagement and fostering urban leadership.

Mr. Young's civic duties involve serving as a Board member for the San Diego Tourism Authority, Downtown San Diego Partnership, and Teach for America San Diego. He was the Co-chair of Mayor Kevin Faulconer's transition team. Mr. Young is a graduate of Howard University, the University of San Diego, and Harvard University's John F. Kennedy School of Government Executive Leadership program. A former college athlete, Mr. Young is a member of the Southwestern College Hall of fame. He and his wife, Jacque, are longtime residents of Valencia Park.



WALKING TOUR STATION GUIDES

Elizabeth Bustos

Community development liaison
San Diego County Health & Human Services Agency
San Diego, CA
tle@silvergatedevelopment.com



Tommy Edmunds

President
Silvergate Development LLC
San Diego, CA
tle@silvergatedevelopment.com



Ian Gill

Founder/Owner
Silvergate Development LLC
San Diego, CA
img@silvergatedevelopment.com



Selina Castillo Hudgins

Director of development operations & institutional advancement

Jacobs Center

San Diego, CA

sellisvizcarra@jacobscenter.org



Max Hutcheson

Project Manager

Silvergate Development LLC

San Diego, CA

cmh@silvergatedevelopment.com

Crystal Skerven

Regional coordinator, community engagement,

Department of Homeless Solutions & Equitable Communities

San Diego County

San Diego, CA

Crystal.Skerven@sdcounty.ca.gov

Cindy Sweeny

Director of Development
Access Youth Academy
San Diego, CA
cindy@accessyouthacademy.org



Selena Ellis-Vizcarra

Director of Operations
Jacobs Center
San Diego, CA
sellisvizcarra@jacobscenter.org



Alex Waters

Director of Economic Development & Innovation
Jacobs Center for Neighborhood Innovation
San Diego, CA
awaters@jacobscenter.org



FORUM PARTICIPANTS

David Abraham, PhD

Assistant Director for Strategic Planning / University Lecturer

Harris County Toll-Road Authority / Rice University

Houston, TX

dbabraham2@gmail.com



Aleiya Als

Graduate Student

University of Buffalo

Brooklyn, NY

aleiyaal@buffalo.edu



Kelly Annis

Owner / District Coordinator

Branch Communications / ULI St. Louis

St. Louis, MO

kelly.annis@uli.org



Alan Aschenbrenner

Senior Vice President, Development
Cambridge Holdings, Inc.
Charlotte, NC
alan@cambridgeinc.com



Michael Balsamo

Senior Vice President, Governmental Relations
Rancho Mission Viejo
San Juan Capistrano, CA
mbalsamo@ranchomv.com



Riley Bancroft

Manager
ULI Northwest
Seattle, WA
riley.bancroft@uli.org



Steven Baumgartner

Director
BAUMGARTNER Urban Systems Strategy
Pittsburgh, PA
steven@baumgartneruss.com



Michael Bloom, PE, ENV SP

Sustainability Practice Manager
R. G. Miller Engineers, Inc.
Houston, TX
mfbloom12@gmail.com



Nour-Lyna Boulgamh

Graduate Student
Harvard University Graduate School of Design
Cambridge, MA
nourlyna_boulgamh@gsd.harvard.edu



Zaccary Bradt

Transportation Planner
San Diego Association of Governments (SANDAG)
San Diego, CA
zaccary.bradt@sandag.org



Scott Brideau

Studio Principal
Little Diversified Architectural Consulting
Arlington, VA
sbrideau@littleonline.com



Charles Brown

Founder & CEO
Equitable Cities
Somerset, NJ
charlesbrown@equitablecities.com



Monique Brown

Graduate Student
Tulane University School of Architecture
New Orleans, LA
melwoodbrown@gmail.com



Shelby Busó

Chief Sustainability Officer
City of San Diego
San Diego, CA
sandiegobuso@gmail.com



Beth Callender

Partner
URBAN INTERVENTIONS
San Diego, CA
beth@urbaninterventions.org



Miguel Castro

Graduate Student
University of Wisconsin-Milwaukee
Milwaukee, WI
mcastro@uwm.edu



Sheila Cedervall

Senior Landscape Architect / Project Manager
OC PARKS
San Clemente, CA
Sheila.Cedervall@ocparks.com



James Chase

Vice President, Marketing
Majora Carter Group, LLC
New York, NY
james@majoracartergroup.com



Kacey Cordes

Vice President, Assistant Director of Project Management
U.S. Bancorp Community Development Corporation
St. Louis, MO
kacey.cordes@usbank.com



Mary Corley

Senior Vice President, Director of Business Development
Rosen Consulting Group
San Francisco, CA
mcorley@rosenconsulting.com



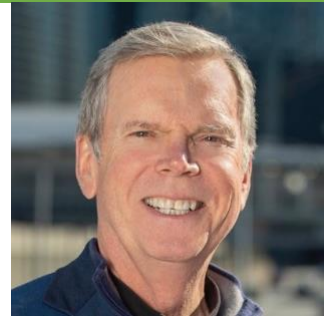
Liliana Diaconu

Research Analyst
DWS Group
New York, NY
liliana.diaconu@dws.com



Jim Durrett

President
The Buckhead Coalition
Atlanta, GA
jdurrett@buckheadcid.com



Sally El Sayed

Graduate Student
Carleton University
Greater Ottawa, CAN
sallyelsayed@cmail.carleton.ca



Jill Esterbrooks

Public Relations Consultant
J. Walcher Communications
San Diego, CA
jill@jwalcher.com



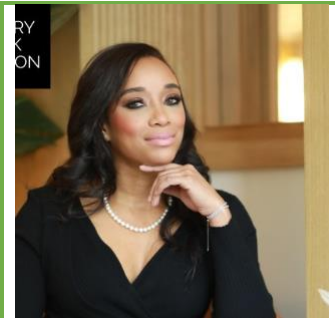
Miluska Franco

Urban Designer
FXCollaborative
Brooklyn, NY
mkafranco@gmail.com



Keo Frazier

Director of Communications and Public Affairs
Denver Housing Authority
Denver, CO
kfrazier@denverhousing.org



Clayton Garrett

Founding Partner
Agmenity
Houston, TX
clayton@agmenity.com



Luis Guajardo

Urban Policy Research Manager
Kinder Institute for Urban Research – Rice University
Houston, TX
luisguajardo@rice.edu



Jeff Handlin

President
Oread Capital & Development
Denver, CO
jeff.handlin@oreadcapital.com



Valarie Jacobs Hapke

Board Member
Jacobs Center
San Diego, CA
valerie.j.jacobs@gmail.com



William Zeh Herbig, AICP

Senior Director, Building Healthy Places
Urban Land Institute
Washington, DC
william.herbig@uli.org



Jude Hernandez

Graduate Student
Northeastern University
Boston, MA
jude.hernandez.818@gmail.com



Julie Hiromoto

Firmwide Director of Integration
HKS, Inc.
Dallas, TX
jhiromoto@hksinc.com



Steve Johnston

Executive Director
Community Impact Real Estate Society
Vancouver, BC, CAN
steve@communityimpactrealestate.ca



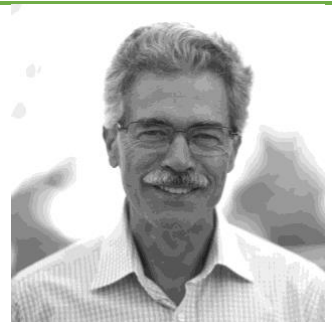
Richard Joy

Executive Director
ULI Toronto
Toronto, ON, CAN
Richard.Joy@uli.org



Kurt Kicklighter

Partner
Breakwater Law Group, LLP
San Diego, CA
kurt@breakwaterlawgroup.com



Heidi Kimball

Senior Vice President
Sunbelt Holdings
Scottsdale, AZ
hkimball@sunbeltholdings.com



Jeff Kingsbury

Managing Principal
Greenstreet Ltd.
Indianapolis, IN
jeff@greenstreetltd.com



Sandra Kulli

President
Kulli Marketing
Los Angeles, CA
kulli@mac.com



Peggy Sue Lane

Senior Vice President
Stewart Title Guaranty Company
Palm Desert, CA
peggy.lane@stewart.com



Todd Lerner

Principal
WHA Inc
Newport Beach, CA
toddl@whainc.com



Mark Lewis

Greenbriar Interests
mw187@icloud.com

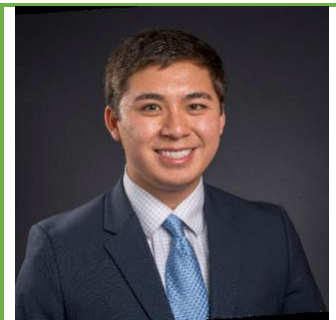
Misty Loocke

Director
ULI Houston
Houston, TX
misty.loocke@uli.org



Bryan Luu

Graduate Student
Cornell University
New York, NY
bl748@cornell.edu



Evelyn Mayo

Urban Research Fellow
Paul Quinn College
Dallas, TX
emayo@pqc.edu



Joanna Mack

Senior Designer and Director of Marketing Strategy

Mogavero Architects

Sacramento, CA

jmack@mogaveroarchitects.com



Jose Bodipo-Memba

Chief Diversity Officer and Director of Sustainable Communities

SMUD

Sacramento, CA

jose.bodipo-memba@smud.org



Brad Molotysky

Partner

Duane Morris LLP

Philadelphia, PA

bamolotsky@duanemorris.com



Donald Monti

President & CEO
Renaissance Downtowns USA
Plainview, NY
dmonti@renaissancedowntowns.com



James A Moore, PhD, AIA, AICP, CRE, LEED AP BD+C, ENV SP

Principal
Jacobs
Tampa, FL
james.moore2@jacobs.com



Leroy Moore

Senior Vice President/Chief Operating Officer
Tampa Housing Authority
Tampa, FL
Leroy.Moore@thafl.com



Rachel Moscovich

Senior Managing Consultant – Sustainability

Ramboll

Los Angeles, CA

rmoscovich@ramboll.com



Beth Nilsson

Director, Building Healthy Places

Urban Land Institute

Washington, DC

Beth.Nilsson@uli.org



Riki Nishimura, AIA, LEED AP

Principal

Populous

San Francisco, CA

riki.nishimura@populous.com



Matt Norris

Senior Director, Building Healthy Places
Urban Land Institute
Washington, DC
Matt.Norris@uli.org



Dean Nucich

Managing Principal
Urban Offerings
Los Angeles, CA
dnucich@urban-offerings.com



Victoria Oestreich

Senior Manager, Centers & Initiatives
Urban Land Institute
Seattle, WA
riki.nishimura@populous.com



Cindy Park

Chief Operating Officer
Prado Group
San Francisco, CA
cpark@pradogroup.com



Shannon Paterson

Contractor
ULI British Columbia
Pitt Meadows, BC, CAN
Shannon.Paterson@uli.org



Neal Payton

Principal
Torti Gallas + Partners
Los Angeles, CA
npayton@tortigallas.com



Heather Personne

Co-Founder & Managing Principal
Evolve Ventures, LLC
Phoenix, AZ
hpersonne@evolveventuresphx.com



Steve PonTell

CEO and President
National CORE
Rancho Cucamonga, CA
spontell@nationalcore.org



Elise Purtiz

Business Development Manager
HED
Los Angeles, CA
EPurtiz@hed.design



Lauren Racusin

Bloomberg Associates

New York, NY

lracusin@bloomberg.org



Lacy Rice

Co-Founder & Managing Partner

FCP

Chevy Chase, MD

lacy@fcpdc.com



Amelie Rives

Community Impact Analyst

VCU Real Estate & Urban Land Development Program

Richmond, VA

arives@vccva.org



Ricshawn Adkins Roane

Executive Director

Weissberg Foundation

Virginia

roane@weissbergfoundation.org



Elizabeth Rose

Operations Analyst / Graduate Student

CPower Energy Management / George Washington University

Washington, DC

lizrose@gwu.edu



Paul Runkle

Partner | Acquisitions Manager

Logan Capital Advisors

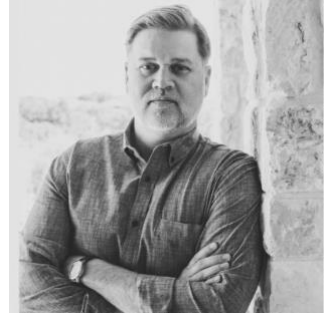
San Diego, CA

paul@loganca.com



Thad Rutherford

CEO & President
SouthStar Communities
San Antonio, TX
thad@southstarcommunities.com



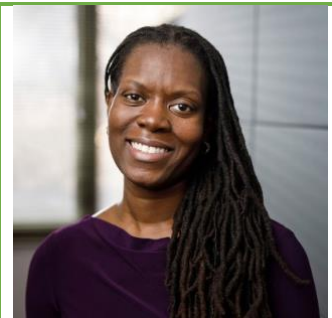
Gabriel Sapuay

Senior Associate
ULI Northwest
Portland, OR
gabriel.sapuay@uli.org



Jolene Saul

Principal/Founder
Revolve Community Development
Chicago, IL
jolene@revolvecd.com



Charles Schilke, AM, JD, CRE, FRICS

Director and Senior Lecturer, The Edward St. John Real Estate Program
Johns Hopkins University
Washington, DC
cschilke2@verizon.net



Diana Schoder

Manager, Building Healthy Places
Urban Land Institute
Washington, DC
Diana.Schoder@uli.org



Kaela Schramm

Director of Projects and Planning
M'akola Development Services
British Columbia, CAN
kschramm@makoladev.com



John Semcken

Senior Vice President of Development
Majestic Realty Co.
La Puente, CA
jsemcken@majesticrealty.com



Charu Singh

Managing Director
Emergent Capital Partners
New York, NY
charu.singh@gmail.com



Sindu Sivayogam

Associate
Land + People Planning
Toronto, ON, CAN
Sindu.Sivayogam@gmail.com



Teri Slavik-Tsuyuki

Principal
tst ink llc.
San Diego, CA
teri@tst-ink.com



Melani Smith, AICP

Director of Regional Development
Gateway Cities Councils of Governments
Paramount, CA
msmith@gatewaycog.org



Olivia Stafford

Senior Account Executive
J. Walcher Communications
San Diego, CA
olivia@jwalcher.com



Anne Stedler

Economic Development Manager

City of Newark, CA

San Francisco, CA

anne.stedler@newark.org



Kevin Stolarick, PhD

Consulting Researcher

Toronto Workforce Innovation Group (TWIG)

Toronto, ON, CAN

cpark@pradogroup.com



Belinda Sward

Founder and CEO

Strategic Solutions Alliance

Carlsbad, CA

bsward@strategicsolutionsalliance.com



Rives Taylor

Director of Design Resilience

Gensler

Houston, TX

rives_taylor@gensler.com



Erik Tilkemeier

Housing Director

City Heights Community Development

San Diego, CA

etilkemeier@cityheightscdc.org



Malee Tobias

Senior Vice President & Chief Marketing Officer

Brookfield Properties

San Diego, CA

Malee.Tobias@brookfieldpropertiesdevelopment.com



Denise Truong

Assistant Planner
4LEAF, Inc.
San Francisco, CA
denisetruong@cpp.edu



Beth Tucker, AICP

Urban Planner/Designer
Kimley-Horn
Atlanta, GA
beth.tucker@kimley-horn.com



Elizabeth Van Horn

Urban Planner and Public Health Analyst
Harris County Public Health
Houston, TX
elizabeth.vanhorn@phs.hctx.net



Jon Tuley

Urban Planner/Designer
Kimley-Horn
Atlanta, GA
Jon.Tuley@kimley-horn.com



Jean Walcher

Owner
J. Walcher Communications
San Diego, CA
jean@jwalcher.com



Andrew Watkins

Principal
SWA Group
Los Angeles, CA
awatkins@swagroup.com



Emma West

Partner
Bousfields, Inc.
Toronto, ON, CAN
ewest@bousfields.ca



Carolyn White, CPESC CERP

Urban Planner
Harris County Public Health
Houston, TX
Carolyn.White@phs.hctx.net



Dana White, CPA, MSRE

Senior Director, Western US Markets
Nuveen
Orange County, CA
dana.white@nuveen.com



Aaron Williams

Project Manager
Penn Services LLC
St. Louis, MO
Williams.am86@gmail.com



Tom Woliver

Co President
Oxland Group, LLC
McKinney, TX
tom@oxlandadvisors.com



Lee Wong

Principal
Attivo / Garden Capital Partners
Houston, TX
lee.wong@gardencp.com

Allison Wood

Senior Regional Planner
San Diego Association of Governments (SANDAG)
San Diego, CA
Allison.Wood@sandag.org



Sandy Young

Vice President
J. Walcher Communications
Alpine, CA
sandy@jwalcher.com



Tiffany Young

Co-Owner and Chief Operating Officer
Epic Health Solutions
Washington, DC
tiffany@elevatingequity.com



Emily Zhang

Associate, Randall Lewis Center for Sustainability in Real Estate
Urban Land Institute
Rockville, MD
Emily.Zhang@uli.org



