

ULI Spring Meeting 2018 | Detroit, MI

# BIO BOOK

## Building Healthy Places Interest Forum



Table of Contents | BHP Interest Forum Bio Book

David Alade ..... 3

Maureen Anway ..... 3

Eddie Arslanian ..... 4

Denis Beaudin, LEED AP ..... 4

Michael Bloom, P.E., ENV. SP, CFM, BCEE ..... 5

Cassie Brenske ..... 5

Scott Brideau, LEED AP O+M ..... 6

Katharine Burgess, AICP ..... 6

Alexa Bush, ASLA ..... 7

Maribel Cifuentes, RN, BSN ..... 7

Carol Coletta ..... 8

Ellen Donovan ..... 8

Violeta Duncan ..... 9

Chris Dunn ..... 9

Joanna Frank ..... 10

Steve Friedman, FAICP, CRE ..... 10

Ken Gall ..... 11

Billy Grayson ..... 11

Bert Gregory, FAIA, LEED Fellow ..... 12

Anika-Kafi Grose ..... 12

Joseph Gruber ..... 13

Ross Guttler ..... 13

Sara Hammerschmidt ..... 14

Juanita Hardy ..... 14

Mike Horst ..... 15

Michelle Johnson ..... 15

Cecily King ..... 16

Randall Lewis ..... 16

Brian Lomel, PE, LEED Fellow, CxA, WELL AP ..... 17

Rachel MacCleery ..... 17

Bethany Madsen ..... 18

Mary McCarthy ..... 18

---

Building Healthy Places Interest Forum | May 1, 2018 | Detroit, MI

Ed McMahon ..... 19

Matthew Norris ..... 19

Bill Odle ..... 20

Christine Quane ..... 20

Tracy Rivard ..... 21

Maria Rosario Jackson ..... 21

Dominic Ruiz ..... 22

Howard Schlesinger ..... 22

Bob Sharpe ..... 23

Jeremy Sharpe ..... 23

Reema Singh ..... 24

Olga Stella ..... 24

Bridget Stesney ..... 25

Ann Taylor ..... 25

David Thorpe ..... 26

Silvia Urrutia ..... 26

Debra Wyatte ..... 27

## David Alade

Principal

Century Partners

Los Angeles, California

[david@centurypartners.org](mailto:david@centurypartners.org)

David Alade is a born and raised native New Yorker. After graduating with a degree in Urban Studies and Economics from Columbia University in 2009, he pursued a career on Wall Street where he focused on providing an array of secured financing solutions for consumer finance companies. During his six years in investment banking at Barclays Capital and Credit Suisse, David facilitated over \$100BN in financing for mid-size to Fortune 500 companies, including tens of billions of dollars of financing for the finance arms of the Big 3 US auto companies (Ford, GM and Chrysler). In the summer of 2014, David fell in love with the charismatic energy burning within the city of Detroit and began financially investing in its neighborhoods. David moved to Detroit in May 2015 to focus on community advocacy and real estate development in Detroit’s urban neighborhoods on a full-time basis.



## Maureen Anway

Neighborhoods Coordinator

Invest Detroit

Detroit, Michigan

[Maureen.Anway@investdetroit.com](mailto:Maureen.Anway@investdetroit.com)



### Eddie Arslanian

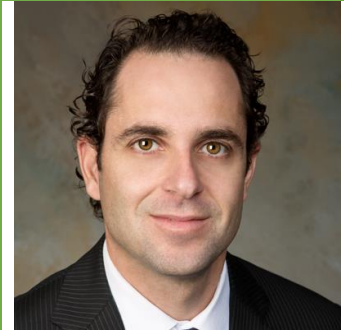
Principal

Ramboll

Los Angeles, California

[EARslanian@ramboll.com](mailto:EARslanian@ramboll.com)

Eddie Arslanian is a Principal with Ramboll Environ in Los Angeles, California and has 20 years of professional experience in providing technical and management expertise in environmental consulting and engineering. A key part of Eddie's practice is to assist his real estate clients revitalize blighted environmentally impacted properties into beneficial uses. As part of the firm's Liveable Cities (LC) practice, Eddie collaborates with the firm's international LC practitioners to provide solutions presented by global challenges caused by today's megatrends such as urbanization, globalization, resource scarcity, climate change, demographic changes and environmental challenges. Eddie holds a BS in civil/environmental engineering from the University of California at Irvine, an MS in civil/environmental engineering from the University of California at Los Angeles, and an MBA from the University of Southern California.



### Denis Beaudin, LEED AP

President

NRG Design Build Inc.

Avon, Colorado

[dbeaudin.eng@gmail.com](mailto:dbeaudin.eng@gmail.com)

Denis Beaudin serves as a board member and founder of Cordis Certified Healthy, a not-for-profit organization. Certified Healthy developed and maintains a rating system designed to encourage healthy environments for both vertical and horizontal development. Mr. Beaudin is also President of NRG Design Build, Inc. which is an engineering and project management firm specializing in strategic mechanical and electrical building energy projects in the healthcare and resort hospitality sectors. He was a Founder and President of Beaudin Ganze Consulting Engineers for 24 years, which engineered 4 & 5 star resort hospitality, residential, commercial and healthcare projects across the United States, Canada and Mexico. Mr. Beaudin, LEED™ AP has over 50 LEED™ certified projects, including 6 Platinum projects. Mr. Beaudin was an engineer at MKK in its Denver office from 1982 to 1985. Mr. Beaudin also served as project engineer and advancing to vice president of mechanical and electrical services for Yoder Engineering Consultants from 1985 to 1991. During his career, Mr. Beaudin has engineered and managed mechanical and electrical engineering design teams for over \$11 billion in hospitality, commercial and healthcare construction projects. Mr. Beaudin serves on the Urban Land Institute national ULI Sustainable Development Council.



**Michael Bloom, P.E., ENV. SP, CFM, BCEE**

Department Manager of Sustainability Practice

R. G. Miller Engineers, Inc.

Houston, Texas

[mbloom@rgmiller.com](mailto:mbloom@rgmiller.com)

Michael F. Bloom, P.E., ENV SP, BCEE, CFM is the Sustainability Practice Manager for R. G. Miller Engineers, Inc. a 70 person civil and environmental engineering firm located in Houston, Texas. He designs natural drainage systems that increase operating income, reduce detention requirements, increase developable land, and provide higher amenity values. He served as an expert reviewer of and contributor to the ULI report, "[Harvesting the Value of Water](#): Stormwater, Green Infrastructure, and Real Estate" (April 2017). Michael is an Envision Sustainability Professional, a Certified Floodplain Manager, and a Board Certified Environmental Engineer. Mr. Bloom serves on the Steering Committee of the Houston Land and Water Sustainability Forum, serves as Vice-Chair of the Government Affairs Committee of the Water Environment Association of Texas, and is a member of the Board of Directors of the Bayou Preservation Association. He has a Bachelor of Science degree in Mechanical Engineering from Syracuse University and a Master of Science degree in Environmental Engineering from Drexel University.



**Cassie Brenske**

Chief Development Officer

Detroit RiverFront Conservancy

Detroit, Michigan

[Cassie.Brenske@DetroitRiverfront.org](mailto:Cassie.Brenske@DetroitRiverfront.org)

Cassie Brenske is the first Chief Development Officer of the Detroit RiverFront Conservancy, spearheading all development initiatives and fundraising strategies. Cassie joins the Conservancy from the Detroit Symphony Orchestra (DSO), where she most recently served as Director of Advancement for Individual Giving. Prior to that, she served in several roles for the Saginaw Bay Symphony Orchestra. Beyond her professional work in non-profit development, Cassie demonstrates her commitment to Detroit by volunteering in a variety of beautification efforts throughout the city. Cassie holds a Bachelor of Arts degree in Journalism from Michigan State University.





### Scott Brideau, LEED AP O+M

Workplace Studio Principal

LITTLE

Arlington, Virginia

[sbrideau@littleonline.com](mailto:sbrideau@littleonline.com)

A seasoned Studio Principal in our Workplace Practice, Scott applies his 28 years of experience in the delivery of workplace design solutions to a diverse range of clients and projects. He fuses his understanding of a company's DNA with his knowledge of best practices and emerging trends in workplace design to create breakthrough solutions that enhance organizational work patterns and enable the peak performance of individuals and teams. Scott's commitment to sustainable solutions extends well beyond LEED. He is current chair of the Community Outreach Committee for CoreNet Global's Mid Atlantic Chapter and a member of the Sustainability Knowledge Community. Scott served on Arlington (VA) County's Task Force and Advisory Board for the County's Community Energy and Sustainability Plan for three years, and for the past two years on the Urban Land Institute's Sustainability Programs Committee. He is currently serving on the County's Community Energy Plan Implementation Review Committee. Scott earned his Bachelor of Science in Architecture from The Catholic University of America and completed coursework toward his Masters of Architecture at Virginia Polytechnic Institute.



### Katharine Burgess, AICP

Senior Director, Urban Resilience

Urban Land Institute

Washington, District of Columbia

[Katharine.Burgess@uli.org](mailto:Katharine.Burgess@uli.org)

Katharine Burgess is director of the Urban Land Institute's Urban Resilience Program. Through research, advisory services, convenings and outreach, ULI's Urban Resilience Program helps communities prepare for increased climate risk and be more resilient in the face of climate change. An urban planner with 12 years' experience, Burgess has practiced urban planning in the United States, the United Kingdom, and Germany, with global project work across the United States, Europe, and Asia. She began her career managing post-Katrina hurricane recovery charrettes commissioned by the states of Louisiana and Mississippi and the city of New Orleans and has since worked on a range of large-scale planning projects designed to encourage environmental performance and pedestrian activity. She received a BA from Williams College and an MSc in Regional and Urban Planning from the London School of Economics.



### Alexa Bush, ASLA

Senior City Planner

City of Detroit Planning & Development Department

Detroit, Michigan

[bushal@detroitmi.gov](mailto:bushal@detroitmi.gov)

Alexa is the City of Detroit’s first landscape architect in the Planning & Development Department and is the Design Director for the East Region which includes City Council Districts 3 and 4. She also serves as the project lead for the Livernois-McNichols Revitalization Initiative, supports development projects, and manages a number of renewable energy, green infrastructure and community development initiatives. Alexa came to the City from SmithGroupJJR in Ann Arbor, MI, where she served as a project manager and designer, gaining diverse experience in urban design and large-scale planning in cities and communities across the US. She was selected for the Piero Patri Fellowship in Urban Design at San Francisco Planning and Urban Research Association (SPUR) in 2012. Alexa graduated summa cum laude in Visual and Environmental Studies at Harvard University and earned her Master’s degree in Landscape Architecture at the University of Virginia. She is currently a candidate in the Graduate Certificate Program in Real Estate Development at the University of Michigan.



### Maribel Cifuentes, RN, BSN

Portfolio Director

The Colorado Health Foundation

Denver, Colorado

[mcifuentes@coloradohealth.org](mailto:mcifuentes@coloradohealth.org)

Maribel Cifuentes is a Portfolio Director at The Colorado Health Foundation, where she manages one of four grant making portfolios and leads a team of program officers working to bring health in reach for all Coloradans. Maribel has two decades of experience in academia and philanthropy. For eighteen years, she was a faculty member at the University of Colorado School of Medicine, where she worked in medical student education, evaluation, and health services research. She was the deputy director of the Robert Wood Johnson Foundation’s national program, Prescription for Health – an initiative to change primary care clinics to help people change unhealthy behaviors and live healthier lives. She was also deputy director of The Colorado Health Foundation’s program, Advancing Care Together – an initiative to bring primary care and behavioral health services together to end the artificial separation of mind and body which leads to needless suffering and inferior care. She has published original research, sat on numerous committees, and has collaborated in international research projects in Basque Country, Spain. Maribel holds a BSN in nursing from the University of Colorado.





## Carol Coletta

Senior Fellow, American Cities Practice

The Kresge Foundation

Memphis, TN

[ccoletta@kresge.org](mailto:ccoletta@kresge.org)

Carol Coletta is a senior fellow with The Kresge Foundation’s American Cities Practice. She is leading a proposed \$40 million collaboration of foundations, nonprofits and governments to demonstrate the ways in which a connected set of civic assets – a civic commons – can yield increased and more widely shared prosperity for cities and neighborhoods. She formerly was vice president of Community and National Initiatives for the John S. and James L. Knight Foundation. She led the two-year start-up of ArtPlace, a public-private collaboration to accelerate creative placemaking in communities across the U.S. and was president and CEO of CEOs for Cities for seven years. She also served as executive director of the Mayors’ Institute on City Design, a partnership of the National Endowment for the Arts, U.S. Conference of Mayors and American Architectural Foundation. For nine years, she was host and producer of the nationally syndicated weekly public radio show Smart City, where she interviewed more than 900 international leaders in business, the arts and cities.



## Ellen Donovan

Principal Health Scientist

Ramboll

San Francisco, California

[edonovan@ramboll.com](mailto:edonovan@ramboll.com)

Ms. Donovan is a Principal Health Scientist at Ramboll. Her primary areas of training include public health and risk assessment. She routinely evaluates the impact of exposures to chemicals on human health in environmental or occupational settings, as well as through the use of consumer products. Many of her projects have assessed community health.



## Violeta Duncan

Senior Associate, Content

Urban Land Institute

Washington, District of Columbia

[Violeta.Duncan@uli.org](mailto:Violeta.Duncan@uli.org)

Violeta Duncan is a Senior Associate for Urban Land Institute’s Center for Sustainability and Economic Performance. Violeta joined ULI in January 2018 to support the 10-Minute Walk Campaign, a nationwide movement launched in Fall 2017, by the Trust for Public Land, the National Recreation and Parks Association, and the Urban Land Institute. Violeta helps manage the new program and assists in strategic communications, national and local convenings, and research. She looks forward to catalyzing ULI’s members, networks, and partners to engage in activities and visioning around green, sustainable, connected, and resilient futures for all. Before joining the Urban Land Institute, Violeta was a program associate for Enterprise Community Partners, Denver, where she helped to oversee \$450,000 in grants, awarded to community based organizations seeking to build affordable housing in transit rich communities. She also worked with external partners to pilot a grant program aimed at diversifying grant recipients and leveraging public and philanthropic capital to support equitable development in the Denver metro region. Prior to this role, Violeta worked for The Democracy Collaborative in Washington, D.C. and Cleveland, Ohio, where she conducted research on how universities, hospitals, community groups, elected officials, and financial institutions could work together to develop local investment, local hiring, and local purchasing programs. Violeta earned her M.S. in Urban Planning from Columbia University and her B.A. from Washington University in St. Louis.



## Chris Dunn

President

Certified Healthy

Denver, Colorado

[cdunn@certifiedhealthy.life](mailto:cdunn@certifiedhealthy.life)

Chris Dunn is President of Certified Healthy. Certified Healthy takes a holistic view of the factors impacting human health and assigns relative value to their importance. It gives property owners, tenants, land use planners and regulators a practical way to guide decision making and allocate resources. The non-profit Certified Healthy was developed to assemble a definitive collection of healthy criteria for communities and buildings. Certified Healthy quantifies the qualitative components of creating a healthy place, providing designs and built projects with a score and recommendations on methods to improve the healthy aspects of a project.



## Joanna Frank

President & CEO

Center for Active Design

New York, New York

[joanna@centerforactivedesign.org](mailto:joanna@centerforactivedesign.org)

Joanna Frank is the founding President and CEO of the Center for Active Design (CfAD), where she advances design and development practices to foster healthy and engaged communities. The Center for Active Design is the operator for Fitwel, a unique building certification that positively impacts occupant health and productivity through an integrated approach to workplace design and operations. Fitwel's development was led by the US Centers for Disease Control and Prevention (CDC) and the General Services Administration (GSA). Prior to launching CfAD, Ms. Frank worked for the City of New York during the Bloomberg Administration, where her positions included Director of Active Design and Director of the NYC FRESH program. Before working for the City, Ms. Frank was a Partner at Bright City Development, LLC where she was responsible for the development of mixed-use residential buildings using sustainable design criteria. Ms. Frank is a member of the American Heart Association Workplace Health Steering Committee, as well as the Urban Land Institute's Affordable/Workforce Housing Council.



## Steve Friedman, FAICP, CRE

President

SB Friedman Development Advisors

Chicago, Illinois

[sbf@sbfriedman.com](mailto:sbf@sbfriedman.com)

Steve Friedman brings more than 40 years of experience in real estate and development advisory services. He has authored several articles, spoken at numerous state and national association conferences, and served on several community assistance panels. He is a member of the Counselors of Real Estate, a member of the College of Fellows of the American Institute of Certified Planners, and a full member of the Urban Land Institute (ULI). His civic affiliations include the Civic Federation, University of Illinois at Chicago College of Urban Planning and Public Affairs Board of Visitors, and the ULI Public-Private Partnership Council. He has served as series chairman for the ULI Chicago District Council's "An Agenda for Growth of the Chicago Region," and as chair of the ULI Chicago District Council from 1998 to 2000. In April 2013, he received the James Felt Creative Counseling Award of the Counselors of Real Estate for his development advisory role on The Shops and Residences of Uptown Park Ridge project. Steve holds a B.A. from Goddard College in Plainfield, VT and an M.S. in Urban and Regional Planning from the University of Wisconsin-Madison.



## Ken Gall

Director of Real Estate

Hershey Trust Company/Milton Hershey School

Hershey, Pennsylvania

[kgall@hersheytrust.com](mailto:kgall@hersheytrust.com)

Ken Gall serves as the Director of Real Estate for Hershey Trust Company, a position he has held for more than 25 years. Mr. Gall is responsible for the internally owned and operated investment real estate portfolio containing over 3,000 acres and also assists in planning and leads the entitlement process for campus real estate (over 7,000 acres). The investment real estate portfolio is all in the local Hershey area market and contains a number of large well-located land holdings with some very exciting opportunities, including a planned mixed use project on 375 acres adjacent to Penn State/Hershey Medical Center. Mr. Gall is a graduate of Millersville University and holds an MBA from Lebanon Valley College. He is a member of Urban Land Institute, a member of ULI Responsible Property Investment Council, a member of National Town Builders Association, Board Member of Downtown Hershey Association, Board Member of Hershey Cemetery Company, Vice-President of The Donegal Foundation and Chairman of Marietta, PA Planning Commission. Mr. Gall is also involved in Milton Hershey School's Project Fellowship, an organization that pairs student homes with employee groups from Milton Hershey School and the Hershey entities for social activities.



## Billy Grayson

Executive Director, Center for Sustainability and Economic Performance

Urban Land Institute

Washington, DC

[Billy.Grayson@uli.org](mailto:Billy.Grayson@uli.org)

Billy Grayson has ten years of experience in developing and directing sustainability strategies. Most recently, he served as founder and principal of Bent Branch Strategies in Washington, D.C., which aids in supporting sustainability program development and managing sustainability reporting for clients in real estate, health care, consumer products and electronics. Prior to founding Bent Branch, Grayson was director of corporate sustainability at Liberty Property Trust in Malvern, Pennsylvania, where he oversaw Liberty's sustainability strategy for more than 700 buildings in 14 markets, including standards for sustainability in development, property management, and sustainability reporting and communications efforts. He worked with city managers and building tenants to accelerate investment in onsite renewable energy projects, and provided a "playbook" for tenants to support their energy efficiency efforts and pursue their own onsite renewable energy projects. Grayson also served as vice president for social and environmental sustainability at the Electric Industry Citizenship Coalition in Washington, D.C., where he managed a global social compliance program and led initiatives to address e-waste, workers' rights, and industry alignment with the United Nations Guiding Principles on Business and Human Rights.



**Bert Gregory, FAIA, LEED Fellow**

Design Partner

Mithun

Seattle, Washington

[bertg@mithun.com](mailto:bertg@mithun.com)

Bert Gregory FAIA plays an active Design Partner role on projects with a focus on work in the urban realm, including transit-oriented development, mixed use, higher education, civic, workplace and urban design. Bert’s project design leadership has resulted in four American Institute of Architects (AIA) COTE Top 10 Green Project awards, two American Society of Landscape Architects National Honor Awards, an AIA National Honor Award for Regional & Urban Design, and the Urban Land Institute (ULI) Award of Excellence. He is a Fellow of AIA and the United States Green Building Council. Under his 15-year leadership as Mithun’s Chairman and CEO, Bert led the firm to international recognition for healthy, performance-based design, positive for people and place. His research initiatives include leading a carbon accounting effort for Seattle’s 2040 regional growth “Reality Check,” advancing “A Model Zoning Code for Resilient Communities,” and developing one of the first web-based materials carbon calculators in collaboration with the University of Texas at Austin and the University of Washington.



**Anika-Kafi Grose**

Director of Entrepreneurship & Education

Eastern Market Corporation

Detroit, Michigan

[agrose@easternmarket.org](mailto:agrose@easternmarket.org)

Anika-Kafi Grose was hired at Eastern Market as the Detroit Kitchen Connect (DKC) Coordinator in August 2014. As the DKC Coordinator, Ms. Grose merged her gifts and talents in food start-ups, administration, leadership development, and education with food entrepreneurship and mentoring. During her first year at Eastern Market, Ms. Grose has continued to grow the number of businesses participating in DKC, while concurrently growing the number of community kitchens for local food entrepreneurs and coordinating the opening of the Eastern Market Community Kitchen in Shed 5 in May 2015. Ms. Grose is proud of the work being done enabling food entrepreneurs the opportunity to fulfill their dreams of successful business development, as well as contributing to the growth and economic development occurring in Detroit and Southeast Michigan.





## Joseph Gruber

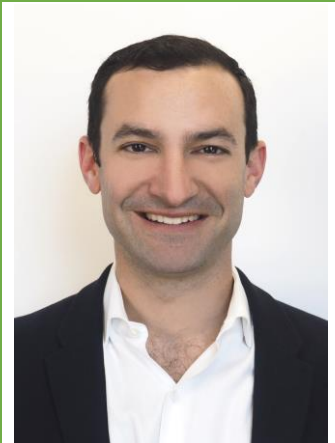
Manager of Community Relations  
 Henry Ford Wyandotte Hospital  
 Detroit, Michigan  
[jgruber@wyan.org](mailto:jgruber@wyan.org)



## Ross Guttler

Vice President  
 Delos  
 New York, New York  
[ross.guttler@delos.com](mailto:ross.guttler@delos.com)

Ross has spent 15 years in investment, development and advisory roles across multiple product sectors. At Delos, Ross manages strategic relationships among Fortune 100 clients as well as institutional investors, owners and landlords. Having joined Delos in the early stages, he has led the growth of several business lines. In addition, Ross serves in an advisory capacity to a NY-based startup focused on developing spectral sensors for the built environment. Prior to joining Delos, Ross founded and managed the commercial division of ROI Properties, a brokerage and asset management firm that caters to distressed portfolios. He advised financial institutions, fiduciaries and receiverships on risk allocation and exit strategies for office, industrial and retail assets. Previously, he worked for the ViaWest Group, a commercial investment, development and services firm with a primary focus on value-add and opportunistic office, industrial and multi-family properties. Ross is a former board member of the Urban Land Institute and has held leadership roles in numerous other industry and non-profit organizations. He received a B.S. in Economics from Duke University and an M.B.A. from Duke University's Fuqua School of Business.



### Sara Hammerschmidt

Senior Director, Content

Urban Land Institute

Ann Arbor, Michigan

[Sara.Hammerschmidt@uli.org](mailto:Sara.Hammerschmidt@uli.org)

Sara Hammerschmidt is Senior Director, Content at the Urban Land Institute, where she develops content and programs focused on the impact of the built environment on public health through the Building Healthy Places Initiative. Throughout her career, Sara has done extensive work on issues that lie at the intersection of health and the built environment. Previously, she worked at PolicyLink in Oakland, California, researching the inclusion of social and economic equity into projects, plans, and policies that are being implemented at the intersection of health and the built environment. Sara has spoken on the topics of Health Impact Assessment, the role of urban planning in creating healthier cities, and recommendations for incorporating health into all built environment decision making at several national conferences. Sara holds an M.S. and Ph.D. in Community and Regional Planning from the University of Texas at Austin, where her research focused on developing recommendations for how planning departments across the country can incorporate public health considerations into their work. She also holds a B.S. in Industrial Operations and Engineering from the University of Michigan, and worked for eight years in the technology industry prior to graduate school.



### Juanita Hardy

Senior Visiting Fellow for Creative Placemaking

Urban Land Institute

Washington, District of Columbia

[Juanita.Hardy@uli.org](mailto:Juanita.Hardy@uli.org)

Juanita Hardy is the ULI Senior Visiting Fellow for Creative Placemaking. Her work supports the Institute’s Building Healthy Places Initiative by deepening and broadening ULI’s focus on creative placemaking. Ms. Hardy founded Tiger Management Consulting Group, LLC, a global training and business consulting services firm, after retiring from IBM in 2005. She has over 41 years of business experience, including 31 years with IBM, and over 35 years in the arts as a nonprofit leader, trustee, collector, and patron of the arts. She is the former Executive Director of CulturalDC, a nonprofit committed to making space for artists and art organizations and fostering cultural and economic vibrancy in communities through its creative placemaking services. While at CulturalDC, she worked closely with area developers to integrate arts and culture into development projects across the Washington, D.C., area. She has also served as an awards program juror for the ULI Washington District Council’s Real Estate Trends Conference for two years. Ms. Hardy has served since 2006 as an executive coach with Right Management, a global human capital development firm, and has served on many nonprofit art boards



Building Healthy Places Interest Forum | May 1, 2018 | Detroit, MI

dating to the 1980s. She co-founded Millennium Arts Salon, an art education initiative, in 2000.

**Mike Horst**

Retired, Former Senior VP for the ULI Larson Leadership Initiative

Urban Land Institute (Retired)

New York, New York

[michaellhorst@gmail.com](mailto:michaellhorst@gmail.com)

Michael Horst is retired and is living in New York City. He was Senior Vice President for the ULI Robert C. Larson Leadership Initiative at the Urban Land Institute. Since beginning his career in 1970, he has also been a real estate consultant, educator and developer. His consulting career included senior positions with Economics Research Associates, PBR, EDAW and International Tourism and Resort Advisors. He has created and taught multi-disciplinary classes at Harvard, UC Berkeley and UCLA and was an Adjunct (Full) Professor at the University of Southern California. He was also co-founder of Shenoa Retreat and Learning Center, an eco-resort in Northern California demonstrating ecologic, economic and community sustainability and innovative building and financing technologies such as straw bale construction and the Land Stewardship program. Throughout his career, he has been an active participant as a full member of the Urban Land Institute, serving as co-founder of the Sustainable Development Council and as Vice Chair of the Program Committee. He is also a Governor (Developer level) of the ULI Foundation. He has a BA degree in economics from University of California Santa Barbara (1967), an MBA from Stanford University (1969) and was a Loeb Fellow at the Harvard Design School (1982). He serves on the Capital Campaign of the Harvard Graduate School of Design and the Loeb Fellowship Alumni Council and is a member of the board of the New York Open Center.



**Michelle Johnson**

Program Officer, Arts & Culture

The Kresge Foundation

Troy, Michigan

[mdjohnson@kresge.org](mailto:mdjohnson@kresge.org)

Michelle D. Johnson serves as program officer with The Kresge Foundation’s Arts and Culture Program. Her responsibilities include reviewing grant requests from community- based nonprofit organizations, making recommendations for grant funding, and monitoring a portfolio of grants. Michelle joined Kresge in 2006, having previously worked as a financial resource development analyst for the Jewish Federation of Metropolitan Detroit. She earned a bachelor of arts degree in industrial/organizational psychology from Wayne State University, and holds a master of science in management from Walsh College. Michelle is a member of several philanthropic affinity groups and she devotes time to volunteer for several charities.



## Cecily King

Executive Director

Live6 Alliance

Detroit, Michigan

[cecilycking@gmail.com](mailto:cecilycking@gmail.com)

Cecily King is the executive director of Live6 Alliance. Prior to joining Live6, Cecily served as development director for the City of Detroit’s Housing & Revitalization Department. In this role, she oversaw more than \$200 million of multifamily and mixed-use projects across the city. One of her key areas of focus was holistic, neighborhood-scale development. Cecily has worked on real estate projects for private developers, large institutional clients, and universities around the country. She holds her Master’s in Real Estate Development from Columbia University as well as degrees from Princeton University and Lehigh University. She serves on several boards and committees including the Michigan Urban Land Institute Young Leader’s Group and the Association of Black Princeton Alumni.



## Randall Lewis

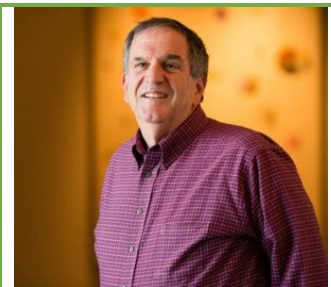
Executive Vice President, Marketing

Lewis Management Corp.

Upland, California

[randall.lewis@lewismc.com](mailto:randall.lewis@lewismc.com)

Randall Lewis oversees the sales and marketing operations of the Company. Randall received his B.A. from Claremont McKenna College. He is regarded as an industry leader in promoting the arts, education, healthy living and sustainable development initiatives. He has been President of the Inland Empire Arts Foundation, Secretary of the Los Angeles County Citizens Planning Council, director of the HomeBuilder’s Council, and national director of the National Association of HomeBuilders. Randall was named in the Los Angeles Times 2006 “West 100” list as one of the top 100 influential people in southern California. He has also received the California Business Properties Association Champion of the Industry Award and has been inducted into the California Building Industry Association Hall of Fame. Randall is a long time ULI member as well as a Governor of the ULI Foundation. Randall serves on several executive boards, including the USC School of Policy, Planning and Development, the UCLA School of Public Policy, Loma Linda University Medical Center’s Orthopedic and Rehabilitation Institute Advisory Council, Cal Poly Pomona’s National Development Council, and co-chairs the San Bernardino County Alliance for Education. He is recognized as an expert in the real estate industry and is frequently quoted in various newspapers, magazines and trade journals. Randall has over 30 years of experience in the real estate industry.



**Brian Lomel, PE, LEED Fellow, CxA, WELL AP**

Principal and Director of PEAK Institute

TLC Engineering for Architecture

Deerfield Beach, Florida

[brian.lomel@tlc-eng.com](mailto:brian.lomel@tlc-eng.com)

Brian Lomel and his wife have lived in Ft. Lauderdale for 18 years. He is a fuzzy bee from Georgia Tech, a chef, a gardener, a runner, a mechanical engineer, and a sustainability consultant. His 25+ years of consulting engineering practice have been established in master planning, engineering/design and construction administration for MEP systems in all building types. Brian enjoys helping customers create healthy, efficient buildings. He is the past president of ASHRAE GoldCoast, past president Construction Executives Association, Board Member of USGBC South Florida, chair of the USGBC’s Tropical Green Conference, co-chair of the Building Healthy Places committee for ULI SE Florida, Co-Chair Energy committee for BOMA Florida, sustainability committee member of the Greater Miami and the Beaches Hotel Association, and was recognized by his peers with AIA Miami’s – 2014/15 Engineer of the Year award.



**Rachel MacCleery**

Senior Vice President, Content

Urban Land Institute

Washington, District of Columbia

[Rachel.MacCleery@uli.org](mailto:Rachel.MacCleery@uli.org)

Rachel MacCleery is senior vice president at the Urban Land Institute, where she leads the organization’s Building Healthy Places Initiative and other programs. Under Building Healthy Places, Ms. MacCleery is spearheading ULI’s efforts to leverage the power of ULI’s global networks to shape projects and places in ways that improve the health of people and communities. The Initiative is working to advance understanding of and action on connections between the built environment and health. Rachel has extensive knowledge of land use, environment and sustainability, social equity, and infrastructure policy and practice issues. Rachel has a Masters Degree in Public Administration and Urban and Regional Planning from the Woodrow Wilson School at Princeton University. She speaks Mandarin Chinese and lives in Washington DC.





## Bethany Madsen

Architect, Project Manager

VIA Architecture

Seattle, Washington

[madsen.bethany@gmail.com](mailto:madsen.bethany@gmail.com)

Bethany Madsen is an Architect in Seattle who has been working on a variety of project types and scales for more than 15 years. With the belief that living densely is one of the most sustainable actions individuals can take to have a positive impact on climate change, she has focused on projects that help to create livable cities. To implement this, she has worked on diverse project types including commercial, retail, multifamily housing, civic, and transportation from early design through construction. Her interests include sustainable practices and land use policies, as well as, adaptive reuse of the existing building stock while valuing thoughtful elegant design solutions on all projects. Additionally, Bethany is a LEED Accredited Professional and an alum of the 2013-2014 Urban Land Institute’s Center for Sustainable Leadership cohort. Afterward, she co-chaired a session on ‘Puget Sound as a Bio-Region’ with a focus on food systems and the impact of land use policies on food production, for a later cohort. She also enjoys cooking, fine dining, gardening, and reading about agricultural diversity and the impacts of food choices on health and the environment.



## Mary McCarthy

Managing Director

Terra Search Partners

San Francisco, California

[mary@terraresearchpartners.com](mailto:mary@terraresearchpartners.com)

Mary McCarthy is managing director of Terra Search Partners, a retained executive search firm helping real estate companies build great teams. Mary brings 30 years of real estate capital markets experience and a deep understanding of real estate private equity to executive search. Prior to joining Terra Search Partners in 2016, Mary was with Hines for nine years as managing director and senior managing director in the Hines Capital Markets Group where she structured investment offerings and raised capital for funds and joint ventures. Mary’s prior positions have included heading her own consulting firm, as well as senior marketing and capital markets roles at Security Capital Group, Clarion Partners, and CBRE Investors. Mary began her business career in New York as a real estate investment banker at Morgan Stanley. Mary serves as a trustee of Grace Cathedral in San Francisco and as a board member of the University of Virginia School of Architecture Foundation. Mary holds a BS in Architecture from the University of Virginia and Master of Architecture and MBA degrees from the University of Pennsylvania’s Design and Wharton Schools, respectively.



## Ed McMahon

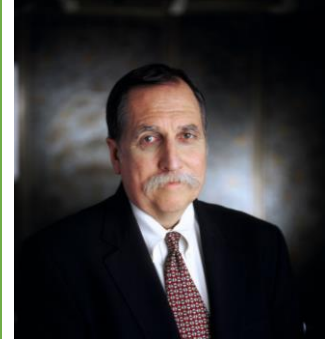
Senior Resident Fellow

Urban Land Institute

Washington, District of Columbia

[Ed.McMahon@uli.org](mailto:Ed.McMahon@uli.org)

As the Senior Fellow for Sustainable Development, Ed McMahon leads ULI's worldwide efforts to conduct research and educational activities related to environmentally sensitive development policies and practices. He is also a senior staff adviser for ULI's Building Healthy Places Initiative and is a sought-after speaker and thinker on health and real estate. Before joining ULI in 2004, McMahon spent 14 years as the vice president and director of land use planning for the Conservation Fund in Arlington County, Virginia, where he helped protect more than 5 million acres of land of historic or natural significance. McMahon is also the cofounder and former president of Scenic America, a national nonprofit organization devoted to protecting America's scenic landscapes. Before that, he taught law and public policy at Georgetown University Law Center for nine years, and served in the U.S. Army, both at home and abroad. McMahon serves on several advisory boards and commissions, including the National Trust for Historic Preservation, Preservation Maryland, the Governor's Institute for Community Design, the Doris Duke Charitable Fund, and the Orton Family Foundation. He has an MA in urban studies from the University of Alabama at Birmingham and a JD from Georgetown University Law School.



## Matthew Norris

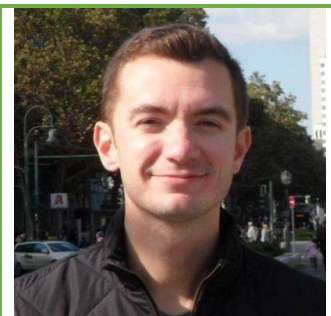
Senior Manager, Content

Urban Land Institute

Washington, District of Columbia

[Matt.Norris@uli.org](mailto:Matt.Norris@uli.org)

Matthew Norris supports the Building Healthy Places Initiative and works on projects linking health, sustainability and development. He is the primary or contributing author of several ULI publications, including "[Cultivating Development: Trends and Opportunities at the Intersection of Food and Real Estate](#)" and "[Active Transportation and Real Estate: The Next Frontier](#)." Matt previously worked at the Tri-State Transportation Campaign where he focused on improving access to safe, reliable and equitable modes of transportation throughout southern New Jersey and the Greater Philadelphia area. Matt earned his Master's in City and Regional Planning from Rutgers University-New Brunswick in 2010, where he focused on international development and comprehensive planning. Matt also holds a B.A. in Sociology from the University of Kansas.



## Bill Odle

Strategic Planning Director

TBG Partners

Houston, Texas

[bill.odle@tbg-inc.com](mailto:bill.odle@tbg-inc.com)

Bill is the Strategic Planning Director at TBG Partners, a firm of 140 landscape architects and planners based throughout Texas and in Florida. Bill serves on TBG’s board of directors and oversees strategic planning for firm-wide initiatives. Odle first joined TBG in 1995 and his vision has been integral to TBG’s sustained growth, including embracing a more holistic, story-based design approach that prioritizes environmental, economic and social criteria. He holds a Bachelor of Landscape Architecture from Oklahoma State University. Bill is also passionately involved in several professional and community organizations, including significant active involvement with the Urban Land Institute (ULI) as the chairman of the board for the Houston ULI District Council and the national Vice-Chair of the Public Private Partnership Council. Bill also sits on the board of Scenic Houston as well as the advisory board for the University of Houston C.T. Bauer College of Business Graduate Real Estate Program.



## Christine Quane

Wholesale Market Coordinator

Eastern Market Corporation

Detroit, Michigan

[cquane@easternmarket.org](mailto:cquane@easternmarket.org)

Christine Quane joined Eastern Market Corporation (EMC) in July 2011 to wield her crazy combination of Supply Chain Management and Culinary Arts degrees and experience on the newly created role of Wholesale Market Coordinator. Christine’s primary role is to expand the activity and volume of the Wholesale Market, connecting growers with new markets while using every imaginative logistical option available. Her work gets her connected with Farm to School, Farm to Table, Farm to Hospital and Farm to Institution programs all over the Detroit Metro-land area. With a mission to get more Michigan produce on more Michigan plates, she is collaborating with her Michigan Food Hub peers on way to digitally connect hub to hub, as well is creating a new entity to manage hub sales at the market. Christine also spearheads grant programs at Eastern Market that facilitates and supports food entrepreneurialism and is working with Eastern Market’s partners in the good food space to map the Food Entrepreneurial Pipeline in Detroit. She is also a collaborating partner of the Detroit Food & Ag Network, a newly formed food business network in the City of Detroit aimed at eliminating barriers to growth and expansion for Detroit area food businesses. As well, she is EMC’s leading authority



Building Healthy Places Interest Forum | May 1, 2018 | Detroit, MI

on Food Safety and represents the organization on national food hub initiatives. In her spare time, she hustles her 15 year old twins to competitive soccer, mountain bikes, and bemoans the fact that she no longer has time to cook!

**Tracy Rivard**

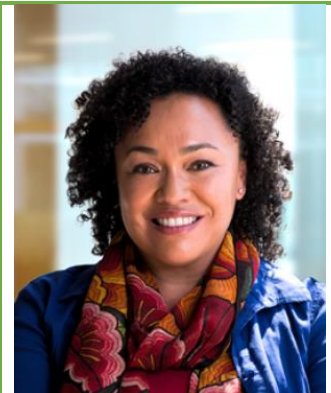
Chief Development Officer  
 Eastern Market Corporation  
 Detroit, Michigan



Tracy Rivard has been coming to Eastern Market since she was only months old, she is often heard saying “Eastern Market is part of my DNA.” Her passion for the market has never wavered. As Chief Development Officer, Tracy has the opportunity to share her passion with others and has been doing so successfully for over 5 years; raising millions of dollars from individuals and organizations committed to equitable urban redevelopment and the Eastern Market. Under her leadership, Eastern Market’s development department was created from scratch; raising funds, friends and advocates. Tracy works closely with others in the community, striving to impact the health, wealth and happiness of Detroiters; Tracy believes that collaboration is key to Eastern Market’s impact.

**Maria Rosario Jackson**

Senior Advisor, Arts & Culture and Institute Professor  
 The Kresge Foundation and Arizona State University  
 Troy, Michigan



Maria Rosario Jackson is an expert in the fields of urban planning, comprehensive community revitalization, and arts and culture. In 2013, with the confirmation of the U.S. Senate, President Barack Obama appointed Jackson to the National Council on the Arts. She is Senior Advisor to the Arts and Culture program at the Kresge Foundation, on the advisory board of the Lambent Foundation, and has served on the boards of directors of several national, state, and local organizations. Previously, Jackson was director of the Culture, Creativity and Communities Program at the Urban Institute in Washington D.C., where she led research on cultural vitality, the role of arts and culture in community revitalization, and support systems for artists.

## Dominic Ruiz

Senior Analyst, Business Development

International WELL Building Institute

New York, New York

[dominic.ruiz@wellcertified.com](mailto:dominic.ruiz@wellcertified.com)

Dominic Ruiz is a Senior Analyst at the International WELL Building Institute (IWBI), whose mission is to improve health and well-being in buildings and communities through the WELL Building Standard. Currently residing in New York, Dominic joins the ULI Health Leaders Network with a strong cross-disciplinary background encompassing community planning and design, architecture, real estate development, and environmental law. Dominic holds a master's degree in Regional and Community Planning from Kansas State University with an emphasis on Public Health and is an active member of the Public Theater, Municipal Art Society, Urban Land Institute, Urban Green Council, American Planning Association, and Contemporary Arts Council at the Museum of Modern Art.



## Howard Schlesinger

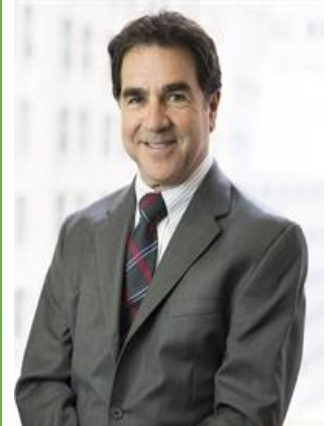
Principal

Meridian Development Partners, LLC

New York, New York

[howards@meridiandp.com](mailto:howards@meridiandp.com)

Howard is the co-founder and partner of Meridian Development Partners. He is a registered architect and manages the repositioning and redevelopment of the properties in the Meridian portfolio. He is also co-founder Red River Asset Management which invests in value-add and core-plus office properties and is the EVP and founding principal of The RoseMark Group, a real estate brokerage company focused on the providing residences for professional athletes and people in the public eye. Previously, Howard was a founding partner of Schlesinger, Loffredo, Brooks Architects, P.C., where he designed and managed a diverse portfolio of projects from corporate office design, residences, restoration, medical offices, veterinary hospitals and recreational facilities. Howard graduated from City College of New York with a Bachelor in Architecture, and is an executive board member of the Architecture Alumni Association of the City College of New York. He is a member of the American Institute of Architects. He is also a member of ULI's Redevelopment and Reuse Council and a Board member of RENT, a professional Real Estate organization.





### Bob Sharpe

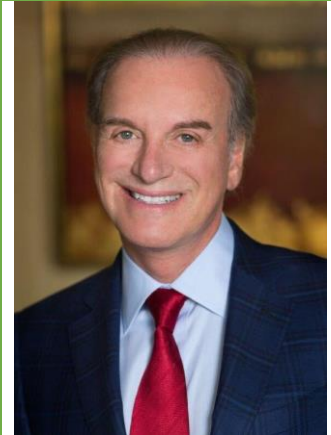
Managing Partner

Rancho Sahuarita Company

Tucson, Arizona

[bsharpe@sharpeandassociates.com](mailto:bsharpe@sharpeandassociates.com)

Bob Sharpe is the president of Sharpe & Associates, a real estate brokerage, investment, and land development firm. Bob has been a managing partner in more than 50 real estate ventures, involving thousands of acres of raw land, and has sold over 10,000 lots in the Tucson, Arizona, area. Bob is currently the managing partner of the owner of Rancho Sahuarita—a 3,000-acre, master-planned community with a variety of amenities, in the town of Sahuarita, Arizona—which he helped to incorporate in 1994.



### Jeremy Sharpe

Vice President of Community Development

Rancho Sahuarita Company

Tucson, Arizona

[jsharpe@sharpeandassociates.com](mailto:jsharpe@sharpeandassociates.com)

As the Vice President of Community Development for the Rancho Sahuarita Company, Jeremy Sharpe is responsible for overseeing business operations, manages community and resident relations, and also guides the company’s marketing efforts. As a part of the Urban Land Institute, Sharpe serves on the National Programming Committee; Co-Chair, Communications of ULI NEXT Global Leadership Initiative, and serves on Leadership for Community Development Council – Green. Most recently, he was the Project Lead on a yearlong project studying Intergenerationalism and its impact on Community Development. He serves on ULI Southern Arizona Leadership and speaks frequently at ULI national meetings. Sharpe received his Bachelors in Geography and Regional Development and his Master’s in Business Administration from the University of Arizona.



## Reema Singh

Senior Associate

Urban Land Institute

Washington, District of Columbia

[Reema.Singh@uli.org](mailto:Reema.Singh@uli.org)

Reema Singh supports the Building Healthy Places Initiative’s projects on corridors, parks, and creative placemaking. With a background in program evaluation, Reema is committed to ensuring that BHP’s initiatives are results-oriented and impactful, and that they leverage community voices and bottom-up approaches to bring equitable change during revitalization. Prior to joining ULI, Reema provided technical assistance and research support for a range of community-based health and urban education reform studies at the RAND Corporation, collaborating with local development agencies to highlight a need for sustainable built environments. Reema holds a passion for writing and a Masters in Public Policy and Management from H. John Heinz III College at Carnegie Mellon University in Pittsburgh, PA, as well as a B.A in Cultural Anthropology from the University of Rochester.



## Olga Stella

Executive Director

Design Core Detroit

Detroit, Michigan

[ostella@designcore.org](mailto:ostella@designcore.org)

Olga Stella is a seasoned economic development professional who has spent her career focused on community and economic development in Detroit, leading directly to over \$200 million in investment in the city. Olga’s work has spanned public policy, program development and deal-making. Olga spent the bulk of her career working closely with the City of Detroit and driving strategy and programs at the Detroit Economic Growth Corporation, where she started as a project manager and left as Chief Operating Officer. Prior to that, she served Mayor Dennis Archer, as an Assistant to Mayor for Economic Development, and then as Chief of Staff to former State Representative Steve Tobocman, who represented the ethnically diverse community of Southwest Detroit. Olga currently leads Design Core Detroit, whose mission is to strengthen Detroit’s creative industries by supporting small businesses and championing the role of design in Detroit’s economy. In this role, she is applying her background in public policy and coalition- building to a new challenge, activating Detroit’s designation as the only UNESCO City of Design in the United States. Avid travelers who appreciate architecture, history, and culture, Olga and her family are proud to call Detroit home.



## Bridget Stesney

Senior Director, Content

Urban Land Institute

Washington, District of Columbia

[Beth.Silverman@uli.org](mailto:Beth.Silverman@uli.org)

Bridget Stesney is leading the ULI's work on the 10-Minute Walk Campaign. Bridget joins ULI after ten years working in the public sector for the District of Columbia for DC Public School and DC Parks + Recreation. During her time in DC government, she led the development of the long-term planning and capital investment strategies for parks, recreation centers, and public schools. Prior to that, Bridget worked for non-profits focused on smart growth and brownfields redevelopment.



## Ann Taylor

Senior Vice President

Midway

Houston, Texas

[ataylor@midwaycompanies.com](mailto:ataylor@midwaycompanies.com)

As Vice President, Ann Taylor is responsible for strategic communications, innovation/best practices, project research, public sector engagement, and education. Prior to joining Midway, Ann was executive director of the Houston District Council of The Urban Land Institute, a 501 c-3 research institute with more than 1,000 local members and over 40,000 members worldwide. Ann's 25 years as an entrepreneur, in nonprofit management, public affairs, and corporate brand positioning included creating and executing innovative brand positioning strategy for the research and development arm of one of the world's largest energy companies, collaborating with teams in the United States, London and The Hague. She developed and implemented internal communications and external public relations strategy for the roll-out of a consumer airline in 24 North American markets. Ann's communications counsel and change management assignments include the merger of two global logistics providers, as well as the combination of United States and United Kingdom operations of a financial services provider, and the merger of two of the largest Catholic healthcare systems in the Southwest United States. Ann graduated from Rice University.



## David Thorpe

Managing Director, Construction & Design

Silverwest Hotels

Denver, Colorado

[dthorpe@silverwesthotels.com](mailto:dthorpe@silverwesthotels.com)

David Thorpe joined Silverwest in 2016 and is responsible for overseeing Silverwest’s new developments and renovation projects at the company’s various hotel properties. Prior to joining Silverwest, Dave served as vice president of Shaw Construction in Denver. His career also includes positions as Development Executive overseeing a large urban mixed-use project in Denver, and Vice President of Development for Vail Resorts Development Company. At Vail Resorts, Dave oversaw the redevelopment of Jackson Hole Golf and Tennis Club and worked on the development of The Arrabelle at Vail Square, a 500,000-square-foot mixed-use development and luxury hotel. He also provided technical construction support services to RockResorts for renovations and hotel capital expenditure projects. Dave received a Masters in Business Administration from The University of Michigan’s Ross School of Business.



## Silvia Urrutia

Managing Partner

U Developing, LLC

Phoenix, Arizona

[sildorau@gmail.com](mailto:sildorau@gmail.com)

Before establishing her consulting firm, Ms. Urrutia served as the Director of Housing and Healthcare at Raza Development Fund ("RDF") where she led the company’s vision and strategic planning in those sectors, oversaw Business Development, Client Relations and Financing nationwide, and managed RDF’s \$20 million sustainable communities fund in the Phoenix metro area. Ms. Urrutia was one of the Founding Board members of ¿Oíste?, a Latino organization to support and promote Latino participation in the political and civic life of Massachusetts, and Co-founded the Arizona Housing Alliance, a statewide organization to support affordable housing. Currently, she serves on the steering committee of the Partnership for Healthy Communities, was appointed by Phoenix’s Mayor Stanton to serve on the Complete Streets Advisory Board, and serves on the Choice Neighborhoods Housing Action Team in the city of Phoenix. A national speaker, she has participated in NCLR’s National Conference and Health Forum, the Arizona Verde XChange, the Border to Border Transportation Conference, and the American Planning Association Conference. Ms. Urrutia holds a Bachelor degree from Arizona State University, a Juris Doctor from the Sandra Day O’Connor School of Law, and has completed courses at Harvard’s Business School and Graduate School of Design.



Building Healthy Places Interest Forum | May 1, 2018 | Detroit, MI

She was an Adjunct Professor at the University of Massachusetts Boston – College of Public & Community Service. She is fluent in English and Spanish.

**Debra Wyatte**

Vice President, Lifestyle Services

Capital Consultants Management Corporation (CCMC)

Plano, Texas

[dwyatte@ccmcnet.com](mailto:dwyatte@ccmcnet.com)

As Vice President, Lifestyle Services for the Central and Eastern Division, Debra Wyatte is responsible for facilitating communications between CCMC lifestyle directors to ensure best practices are captured and shared within the company’s national portfolio. When conducting lifestyle consulting services, CCMC works closely with existing and future developer needs to ensure the community can successfully develop, implement, coordinate their integrated lifestyle plan and programs. Most recently she participated on a panel called, “What’s Age Got to do with It?” at the ULI Florida Summit. Within the division, Wyatte services CCMC communities throughout Texas, Florida, Georgia, South Carolina, Tennessee, and California.

