



Urban Land  
Institute

Building Healthy  
Places Initiative

Building Healthy Places Interest Forum | October 24, 2016 | Dallas, TX

# Bio Book

## Building Healthy Places Interest Forum





## **Brenda Anderson**

Director of Real Estate Development  
NWA Downtown Revitalization Fund  
Bentonville, Arkansas

[brenda.anderson@ropeswinggroup.com](mailto:brenda.anderson@ropeswinggroup.com)

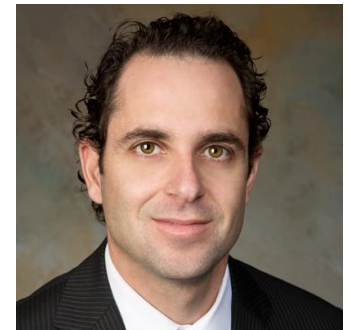


Brenda is the Director of Real Estate Development for NWA Downtown Revitalization Fund. The Fund develops properties in Northwest Arkansas designed to provide unique hospitality, food and beverage, entertainment, commercial and residential experiences in downtown neighborhoods. Prior to her tenure with NWA DRF, Brenda spent 15 years as the Executive Director of Community Development Corporation, Bentonville/Bella Vista, Inc.. The CDC is a local non-profit focused on providing affordable housing and housing with services for the elderly. During Brenda's tenure, the CDC developed the first licensed assisted living facility in Arkansas as well as the first housing cooperative in the state. Brenda's work experience also includes over a decade working in municipal and county planning. Brenda is past President of Downtown Bentonville, Inc. and a founding member of NWA Land Trust.

## **Eddie Arslanian**

Principal  
Ramboll Environ  
Los Angeles, California

[EARslanian@ramboll.com](mailto:EARslanian@ramboll.com)



Eddie Arslanian is a Principal with Ramboll Environ in Los Angeles, California and has over 15 years of professional experience in providing technical and management expertise in environmental consulting and engineering. A key part of Eddie's practice is to assist his real estate clients revitalize blighted environmentally impacted properties into beneficial uses. As part of the firm's Liveable Cities (LC) practice, Eddie collaborates with the firm's international LC practitioners to provide solutions presented by global challenges caused by today's megatrends such as urbanization, globalization, resource scarcity, climate change, demographic changes and environmental challenges. Eddie holds a BS in civil/environmental engineering from the University of California at Irvine, an MS in civil/environmental engineering from the University of California at Los Angeles, and an MBA from the University of Southern California.

## Ronnie Beard

Managing Member and Director of Development  
BWB Advisors, LLC  
Mandeville, Louisiana  
[rebeard@bwbadvisors.com](mailto:rebeard@bwbadvisors.com)



Ronnie Beard is the Managing Member and Director of Development for BWB Advisors and President of Beard & Associates, LLC. BWB Advisors is a real estate development and advisory group with a project portfolio including senior living communities, healthcare, and master planned mixed-use communities. Beard is a consultant to Inspired Living Communities, a Tampa based group developing Assisted Living/ Memory Care communities in affiliation with the NFL Retired Players Association. These communities are being developed in all 32 NFL cities. Beard is also the master developer of “Watercross”, a 31-acre health and wellness campus. The campus co-anchors a healthcare corridor in the Greater New Orleans market along with Ochsner Health System. Beard & Associates, LLC has lead transactions in the industries of hospitality, manufacturing, offshore aviation and real estate. As a member of NAHB, Beard served on the 50+ Housing Council, the voice of the 50+ seniors housing industry and a leading source of information and research on the active adult, independent living, service-enriched, and assisted living markets. As a member of this council, Beard participated in the development of “Building for Boomers and Beyond,” the national 50 + Housing Symposium in New Orleans.

## Denis Beaudin

President  
NRG Design Build Inc.  
Avon, Colorado  
[dbeaudin.eng@gmail.com](mailto:dbeaudin.eng@gmail.com)



Denis Beaudin recently retired from Beaudin Ganze Consulting Engineers, Inc. (BGCE) on March 23, 2015, after more than 23 years of leading the mechanical and electrical engineering firm. He was also an early believer in sustainable design for building systems, and became a champion for the U.S Green Building Council’s (USGBC) LEED™ certification program. One of BGCE’s early projects, the Sundeck mountain-top restaurant owned by Aspen Skiing Company, became the 11th project in the world to receive LEED certification under the pilot program. Since then, Denis has been involved in over 50 LEED™ certified buildings including six Platinum projects among the Gold and Silver certified projects. “Aviation was the key,” says Denis, who piloted the firm’s aircraft to job sites often inaccessible by limited or non-existent commercial flights. “Our own aviation allowed us to expand further into the western U.S., and, in turn, across the country” working on predominantly hospitality and healthcare projects. Denis is a licensed Professional Engineer in 18 states.



Building Healthy Places Interest Forum | October 24, 2016 | Dallas, TX

## Amanda Buckley

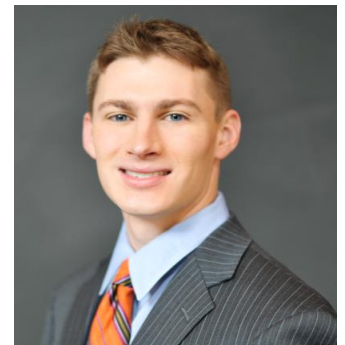
Director, Marketing & Business Development  
Omniplan  
Dallas, Texas  
[abuckley@omniplan.com](mailto:abuckley@omniplan.com)



As Director of Marketing & Business Development, Amanda is responsible for creating and maintaining successful client relationships, engaging all firm members in business development, as well as developing and sustaining a consistent brand identity that is evident throughout every facet of the firm. Her background in graphic design and branding has given her a strong eye for detail informing every decision she makes regarding the firm's identity. Amanda lives in East Dallas with her husband Clay and two daughters. She proudly serves her community in East Dallas in a multitude of ways. She is a founding board member and President for the Casa View Haven Neighborhood Association, a founding board member of the Greater Casa View Alliance and an active member of Ferguson Road Initiative. Her efforts in each of these organizations have earned them front page coverage in the Dallas Morning News and a spot on Good Morning Texas and WFAA Channel 8 News. In 2015, Amanda received the Young Leader of the Year Award from CoreNet Global Southwest Chapter.

## Hunter Buwick

Development Associate  
Specialized Real Estate Group  
Fayetteville, Arkansas  
[hunter@specializedreg.com](mailto:hunter@specializedreg.com)



At Specialized Real Estate Group, Hunter Buwick provides financial analysis for all projects including acquisitions, new development, and rehabs. In addition, he works with lenders and equity sources to raise capital for these projects. With a passion for health, Hunter also assists in incorporating healthy design principles and amenities into Specialized's projects. Before joining Specialized, Hunter worked in multi-family brokerage with extensive experience in the Arkansas and Oklahoma markets closing over \$41 million in sales and over 1,250 total units. Hunter holds a BSBA from the University of Arkansas where he also played on the Razorback golf team.

## Clare De Briere

Executive Vice President and Chief Operating Officer  
The Ratkovich Company  
Los Angeles, California  
[cdebriere@ratkovich.net](mailto:cdebriere@ratkovich.net)



Clare De Briere is the Executive Vice President and Chief Operating Officer of The Ratkovich Company, whose mission is to profitably produce developments that improve the quality of urban life. In her career with the company she has overseen the acquisition, entitlement, planning development and/or disposition of millions of square feet of development. Clare is an active member of the Urban Land Institute, has been named on the Los Angeles Business Journal's Women Making a Difference list, and has been on the Real Estate – Southern California's Women of Influence list every year since 2003. She holds an undergraduate degree in history from the University of California at Los Angeles, and a graduate degree from the University of Southern California's Lusk Center for Real Estate.

## David De Vos

Chief Sustainability Officer and Global Director of Sustainability  
PGIM Real Estate  
Chicago, Illinois  
[david.devos@pgim.com](mailto:david.devos@pgim.com)



As the Chief Sustainability Officer and Global Director of Sustainability for PGIM Real Estate, David leads PREI's Global Sustainability Council and oversees its regional Councils in the Americas, Asia and Europe. While working to improve the environmental, social and governance (ESG) performance of a diversified global real estate portfolio, he created metrics and tools for property, asset and portfolio managers to help them improve investment performance. David is a LEED AP and holds a Bachelor in Environmental Design, a professional Bachelor of Architecture and a Masters of Business Administration degree. He is a member of the American Institute of Architects and is an Officer on the USGBC New Jersey Board of Directors. David's diverse corporate, retail and construction credentials grant him an understanding of the built environment from an owner's, architect's, and contractor's point-of-view.



## Chris Dunn

President  
Certified Healthy  
Denver, Colorado  
[cdunn@certifiedhealthy.life](mailto:cdunn@certifiedhealthy.life)



Chris Dunn is President of Certified Healthy. Certified Healthy takes a holistic view of the factors impacting human health and assigns relative value to their importance. It gives property owners, tenants, land use planners and regulators a practical way to guide decision making and allocate resources. The non-profit Certified Healthy was developed to assemble a definitive collection of healthy criteria for communities and buildings. Certified Healthy quantifies the qualitative components of creating a healthy place, providing designs and built projects with a score and recommendations on methods to improve the healthy aspects of a project.

## Joanna Frank

Executive Director  
Center for Active Design  
New York, New York  
[joanna@centerforactivedesign.org](mailto:joanna@centerforactivedesign.org)



Joanna Frank is the executive director of the Center for Active Design. Prior to this position, she was the director of active design at New York City's Department of Design and Construction. Organized in response to a growing international health crisis, Active Design promotes the prevention and control of obesity and chronic diseases by increasing opportunities for daily physical activity and healthy eating through the design of buildings, streets, and neighborhoods. Immediately prior to joining Active Design, Frank was the director of the FRESH program. This incentive program was started by Mayor Bloomberg's administration as a response to findings that showed many low-income areas of New York City are underserved by supermarkets and have the highest rates of diet-related disease.

## **Stephen B. Friedman**

President  
SB Friedman Development Advisors  
Chicago, Illinois  
[sbf@sbfriedman.com](mailto:sbf@sbfriedman.com)



Steve Friedman brings more than 40 years of experience in real estate and development advisory services. He has authored several articles, spoken at numerous state and national association conferences, and served on several community assistance panels. He is a member of the Counselors of Real Estate, a member of the College of Fellows of the American Institute of Certified Planners, and a full member of the Urban Land Institute (ULI). His civic affiliations include the Civic Federation, University of Illinois at Chicago College of Urban Planning and Public Affairs Board of Visitors, and the ULI Public-Private Partnership Council. He has served as series chairman for the ULI Chicago District Council's "An Agenda for Growth of the Chicago Region," and as chair of the ULI Chicago District Council from 1998 to 2000. In April 2013, he received the James Felt Creative Counseling Award of the Counselors of Real Estate for his development advisory role on The Shops and Residences of Uptown Park Ridge project. Steve holds a B.A. from Goddard College in Plainfield, VT and an M.S. in Urban and Regional Planning from the University of Wisconsin-Madison.

## **Kathryn Gardow**

Chief Operations Officer  
Metro AG Strategies  
Seattle, Washington  
[kathryn@metroagstrategies.com](mailto:kathryn@metroagstrategies.com)



Kathryn Gardow brings more than twenty years of accomplishments in diverse land use, public works, infrastructure and organizational leadership initiatives. Her expertise as a civil engineer, land use planner, and regulatory expert includes notable large-scale master-planned communities in the Puget Sound region. Dedicated to preserving and keeping organic farmland productive in perpetuity, Kathryn served as Executive Director of PCC Farmland Trust. In that capacity, she grew the scope and impact of the nation's only organic farmland trust to a million-dollar operation. Kathryn is widely known as passionate and effective in regional and Washington policy advocacy on behalf of local farming and strengthening our regional food system. She serves in diverse capacities as a strategic partner among government, business and philanthropy, including leadership on the Board of Washington Sustainable Food and Farming Network and past Director of PCC Natural Markets. Equally active in her northeast Seattle neighborhood, Kathryn is a Director of the Burke Gilman Place Public Development Authority. She holds a Master of Business Administration from the University of Washington and a Bachelor of Science in Civil Engineering from Union College.



**Building Healthy Places Interest Forum | October 24, 2016 | Dallas, TX**

## Ross Guttler

Senior Director, Business Development  
Delos  
New York, New York  
[ross.guttler@delos.com](mailto:ross.guttler@delos.com)



Ross has spent 15 years in investment, development and advisory roles across multiple product sectors. At Delos, Ross manages strategic relationships among Fortune 100 clients as well as institutional investors, owners and landlords. Having joined Delos in the early stages, he has led the growth of several business lines. In addition, Ross serves in an advisory capacity to a NY-based startup focused on developing spectral sensors for the built environment. Prior to joining Delos, Ross founded and managed the commercial division of ROI Properties, a brokerage and asset management firm that caters to distressed portfolios. He advised financial institutions, fiduciaries and receiverships on risk allocation and exit strategies for office, industrial and retail assets. Previously, he worked for the ViaWest Group, a commercial investment, development and services firm with a primary focus on value-add and opportunistic office, industrial and multi-family properties. Ross is a former board member of the Urban Land Institute and has held leadership roles in numerous other industry and non-profit organizations. He received a B.S. in Economics from Duke University and an M.B.A. from Duke University's Fuqua School of Business.

## Juanita Hardy

Senior Visiting Fellow for Creative Placemaking  
Urban Land Institute  
Washington, DC  
[juanita.hardy@uli.org](mailto:juanita.hardy@uli.org)



Juanita Hardy is the ULI Senior Visiting Fellow for Creative Placemaking. Her work will support the Institute's Building Healthy Places Initiative by deepening and broadening ULI's focus on creative placemaking. Ms. Hardy founded Tiger Management Consulting Group, LLC, a global training and business consulting services firm, after retiring from IBM in 2005. She has over 41 years of business experience, including 31 years with IBM, and over 35 years in the arts as a nonprofit leader, trustee, collector, and patron of the arts. She is the former Executive Director of CulturalDC, a nonprofit committed to making space for artists and art organizations and fostering cultural and economic vibrancy in communities through its creative placemaking services. While at CulturalDC, she worked closely with area developers to integrate arts and culture into development projects across the Washington, D.C., area. She has also served as an awards program juror for the ULI Washington District Council's Real Estate Trends Conference for two years. Ms. Hardy has served since 2006 as an executive coach with Right Management, a global human capital development firm, and has served on many nonprofit art boards dating to the 1980s. She co-founded Millennium Arts Salon, an art education initiative, in 2000.



## Jay Hoeschler

Design Director  
Avid Trails  
El Segundo, California  
[jay@avidtrails.com](mailto:jay@avidtrails.com)

Jay Hoeschler is a founding partner of Avid Trails, a national planning and design firm specializing in fitness and connectivity trail systems for communities, parks and municipalities. His role in the firm includes masterplan design of trail alignments, fitness stations, wayfinding and interpretive signage. The trails are designed for walkers, hikers, runners and cyclists, and place a special emphasis on creating fun and unique experiences for users of all ages and abilities. Fitness and health are at the core of Avid Trails. Trails often feature a variety of Avid Stations, custom designed for group fitness and cross training activities. Some Avid systems also include bike parks, pump tracks and flow trails for cyclists. Although a brand new ULI member, Jay was recently selected to be part of a Healthy Places Committee for the city of Lynwood, CA, studying issues and providing solutions for community health and connectivity. Jay's design and branding experience comes from a long career as creative director with some of the country's top graphic design and advertising agencies including Launchpad Studio, Cecilian Worldwide, and Saatchi. His creative work has focused primarily on branding and marketing of master planned communities.



## Mike Horst

New York, New York  
[michaellhorst@gmail.com](mailto:michaellhorst@gmail.com)

Michael Horst is retired and is living in New York City. He was Senior Vice President for the ULI Robert C. Larson Leadership Initiative at the Urban Land Institute. Since beginning his career in 1970, he has also been a real estate consultant, educator and developer. His consulting career included senior positions with Economics Research Associates, PBR, EDAA and International Tourism and Resort Advisors. He has created and taught multi-disciplinary classes at Harvard, UC Berkeley and UCLA and was an Adjunct (Full) Professor at the University of Southern California. He was also co-founder of Shenoa Retreat and Learning Center, an eco-resort in Northern California demonstrating ecologic, economic and community sustainability and innovative building and financing technologies such as straw bale construction and the Land Stewardship program. Throughout his career he has been an active participant as a full member of the Urban Land Institute, serving as co-founder of the Sustainable Development Council and as Vice Chair of the Program Committee. He is also a Governor (Developer level) of the ULI Foundation. He has a BA degree in economics from University of California Santa Barbara (1967), an MBA from Stanford University (1969) and was a Loeb Fellow at the Harvard Design School (1982). He serves on the Capital Campaign of the Harvard Graduate School of Design and the Loeb Fellowship Alumni Council and is a member of the board of the New York Open Center.



## Jeremy Hudson

Partner & CEO  
Specialized Real Estate Group  
Fayetteville, Arkansas  
[jeremy@specializedreg.com](mailto:jeremy@specializedreg.com)

Jeremy Hudson is CEO of Specialized Real Estate Group in Fayetteville, Arkansas, a company focused on developing and managing walkable, healthy, and sustainable multifamily communities. He has developed over 1.3 million square feet of apartment buildings that are registered for LEED certification, including the award-winning Eco Modern Flats. In October of 2014, Jeremy was named to the Urban Land Institute's first-ever 40 Under 40 class, which recognizes the best and brightest young land use professionals from around the globe. Jeremy is a graduate of John Brown University with a degree in Construction Management and Business Administration.



## J. Tipton Housewright

Principal & CEO  
Omniplan  
Dallas, Texas  
[thousewright@omniplan.com](mailto:thousewright@omniplan.com)

In his role as Principal, Tip leads a wide variety of project types including regional retail and mixed use projects, innovative contemporary churches and higher education projects. To each project he brings a commitment to client service and innovative, cost-effective solutions. His work is characterized by his passion for creating memorable spaces that connect with their communities. Tip earned a Bachelor of Architecture from the University of Texas and a Masters of Business Administration from Southern Methodist University. Tip has served as President of the Dallas Chapter of the American Institute of Architects and President of the Dallas Center for Architecture and is active in the Texas Society of Architects. He was named a Fellow of the American Institute of Architects in 2010. He is an active Board Member and volunteer at the Dallas Arboretum & Botanical Society. Also on his own time, Tip leads various community planning initiatives in his North East Dallas neighborhood where he lives with his wife Lana and they have four children.





Building Healthy Places Interest Forum | October 24, 2016 | Dallas, TX

## Christopher Janson

Project Manager, Planning/Architecture  
Looney Ricks Kiss  
Dallas, Texas  
[cjanson@lrk.com](mailto:cjanson@lrk.com)

Christopher is an urban designer and architect who strives to successfully bridge the two disciplines. His expertise is in taking his architectural-scale experience and knowledge of building types and using it to shape his approach to urban design-scale projects. This skill has made him a leader in the exploration of innovative urban building types and sustainability from building to city-wide scales. His experience working with both private and public sector clients has enabled him to gain a strong understanding of the key issues for successful project implementation from the builder's, developer's, and local jurisdiction's perspective. Prior to joining LRK, Chris was an Associate at Opticos Design, Inc., where he led many of the small firm's nationally recognized award-winning projects including the Seaside Town Square and Beachfront Master Plan and the Richmond Livable Corridors Initiative. The Richmond Livable Corridors Initiative was a comprehensive planning effort focused on revitalizing Richmond, California's downtown through strategic interventions along the main commercial corridors. In addition to his leadership on the firm's architectural projects and building type research, Chris was also a key contributor to the firm's development of their Form-Based Coding practice. Drawing upon his architectural experience, he transformed complex text-heavy zoning codes into user friendly graphic documents that were more accessible for private developers and property owners.



## Michel Kirby

Managing Director  
Invesco Real Estate  
Dallas, Texas  
[Michael.Kirby@invesco.com](mailto:Michael.Kirby@invesco.com)

Mr. Kirby joined Invesco in 1993 after a varied career in commercial real estate management. He currently serves as Director of North American Real Estate Operations and U.S. Asset Management for IRE. In this capacity he co-manages IRE's North American direct real estate investment platform and heads asset management of Invesco's office, industrial, retail, and multi-family investments in the U.S. He currently serves on IRE's North American Executive Committee, Investment Committee and Investment Strategy Group. Mr. Kirby has 32 years of real estate experience. Mr. Kirby is a graduate of The University of Texas at Austin with a Bachelor of Science degree in Civil Engineering. He is a Certified Property Manager (CPM®) and has served on the Executive Council of the Dallas Chapter of the Institute of Real Estate Management (IREM).





## Ashley Langworthy

Associate

SWA Group

San Francisco, California

[alangworthy@SWAGroup.com](mailto:alangworthy@SWAGroup.com)



Ashley's professional passion lies at the intersection of urban design, planning, and landscape architecture. She brings together these disciplines through her work as a designer and problem-solver of all scales in the urban environment. Her project work includes the transformation and reinvention of the urban district, public realm, regional park, civic heart, and neighborhood center.

## Justin Lax

President and Managing Partner

Avid Trails

Ringoes, New Jersey

[justin@avidtrails.com](mailto:justin@avidtrails.com)



Justin Lax has worked as a real estate brand strategist for over seven years, having advised a wide variety of clients on community brand strategy, visioning, positioning, naming, consumer intelligence, programming and events, digital marketing, content strategy, customer relationship management, social media and amenity strategy.

Combining his experience touring development projects and studying ongoing consumer research with his passion for athletics, mountain bicycling, and outdoor activities, Justin co-founded the Avid Trails company in 2014 with a small group of partners including one of the Nation's preeminent professional trail builders. Based in Park City, Utah, Avid Trails is the first consumer-driven branded trail system available to real estate developers in the Country. In addition to planning and design services, the company focuses on post-construction activation and user engagement through events and programming. As President and Managing Partner, Justin is actively involved in all aspects of the business including planning and design, operations, construction management, research and development, brand development, community activation and more. Justin is a graduate of Kutztown University of Pennsylvania, has attended continuing education classes at the School of Visual Arts in Manhattan and Rutgers University, and serves on the Board of Trustees at the Hunterdon County YMCA in Flemington, New Jersey where he is a past recipient of the Bowden, Byrnes, McCormick Dedication Award for outstanding service to the YMCA's financial development efforts. Justin currently resides in Lambertville, NJ where he enjoys cycling, mountain biking, motorcycling, cooking and craft beer.



**Building Healthy Places Interest Forum | October 24, 2016 | Dallas, TX**

## **Doug Leighton**

Vice President, Sustainability

Brookfield Residential

Calgary, Alberta, Canada

[Doug.Leighton@brookfieldrp.com](mailto:Doug.Leighton@brookfieldrp.com)



Doug Leighton is a proponent of planning and urban design as a way of creating more successful and sustainable communities. He has over thirty years' experience as a professional planner and architect working in both the public and private sectors. Doug was recently appointed as VP, Sustainability for Brookfield Residential Properties, one of North America's leading homebuilding and residential land developers. Doug's previous positions with Brookfield included VP Planning, Calgary Communities and Director of Planning, Vancouver Island (2009). Before joining Brookfield, Doug was principal of a leading New Zealand consultancy; where he helped to develop the NZ Urban Design Protocol, co-founded Urban Design Forum NZ, led the master-planning of the government's sustainable development showcase (Hobsonville Point), and advised clients as diverse as Auckland International Airport, Housing NZ, Waterfront Auckland and Shania Twain. Doug was founding Director of Planning and Development for the Town of Banff; served as Senior Planner for Whistler; and worked as an architect/planner in Vancouver and Calgary on projects including Expo 86 and the Calgary LRT system. Doug holds degrees in geography (BA Hons Geog) and environmental design (ME Des Arch) from the University of Calgary; and has served as a director of the Alberta, New Zealand and British Columbia Planning Institutes.

## **Brian Lomel**

Principal

TLC Engineering for Architecture

Deerfield Beach, Florida

[brian.lomel@tlc-eng.com](mailto:brian.lomel@tlc-eng.com)



Brian Lomel and his wife have lived in Ft. Lauderdale for 18 years. He is a fuzzy bee from Georgia Tech, a chef, a gardener, a runner, a mechanical engineer, and a sustainability consultant. His 25+ years of consulting engineering practice have been established in master planning, engineering/design and construction administration for MEP systems in all building types. Brian enjoys helping customers create healthy, efficient buildings. He is the past president of ASHRAE GoldCoast, past president Construction Executives Association, Board Member of USGBC South Florida, chair of the USGBC's Tropical Green Conference, co-chair of the Building Healthy Places committee for ULI SE Florida, Co-Chair Energy committee for BOMA Florida, sustainability committee member of the Greater Miami and the Beaches Hotel Association, and was recognized by his peers with AIA Miami's – 2014/15 Engineer of the Year award.

## Rachel MacCleery

Senior Vice President, Content  
Urban Land Institute  
Washington, DC  
[Rachel.MacCleery@uli.org](mailto:Rachel.MacCleery@uli.org)



Rachel MacCleery is Senior Vice President at the Urban Land Institute, where she leads the organization's Building Healthy Places Initiative, as well as its Infrastructure Initiative. Under Building Healthy Places, Rachel is spearheading ULI's efforts to leverage the power of ULI's global networks to shape projects and places in ways that improve the health of people and communities. Rachel's Infrastructure Initiative portfolio encompasses a multi-faceted program of work promoting better and more sustainability infrastructure decision making. Rachel is a frequent speaker and writer on infrastructure topics. Rachel has both local and international experience, and began her career as a transportation planner for the city of Washington, D.C. Rachel consulted on infrastructure and planning projects in China while working for global infrastructure provider AECOM from 2004 to 2008. Rachel speaks Mandarin Chinese and holds master's degrees in public affairs and urban and regional planning from the Woodrow Wilson School at Princeton University.

## Mary McCarthy

Managing Director  
Terra Search Partners  
San Francisco, California  
[mary@terrasearchpartners.com](mailto:mary@terrasearchpartners.com)



Mary McCarthy is managing director of Terra Search Partners, a retained executive search firm helping real estate companies build great teams. Mary brings 30 years of real estate capital markets experience and a deep understanding of real estate private equity to executive search. Prior to joining Terra Search Partners in 2016, Mary was with Hines for nine years as managing director and senior managing director in the Hines Capital Markets Group where she structured investment offerings and raised capital for funds and joint ventures. Mary's prior positions have included heading her own consulting firm, as well as senior marketing and capital markets roles at Security Capital Group, Clarion Partners, and CBRE Investors. Mary began her business career in New York as a real estate investment banker at Morgan Stanley. Mary serves as a trustee of Grace Cathedral in San Francisco and as a board member of the University of Virginia School of Architecture Foundation. Mary holds a BS in Architecture from the University of Virginia and Master of Architecture and MBA degrees from the University of Pennsylvania's Design and Wharton Schools, respectively.



**Building Healthy Places Interest Forum | October 24, 2016 | Dallas, TX**

## **Tim McCarthy**

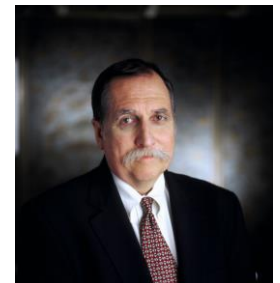
Principal and Director of Operations  
Hart Howerton  
New York, New York  
[TMcCarthy@harthowerton.com](mailto:TMcCarthy@harthowerton.com)



As Managing Principal of Hart Howerton, Tim McCarthy directly engages client leadership in planning and designing market-driven solutions that produce outstanding business results. Having split the last 15-years between London & New York, his leadership of design teams has guided the implementation of projects in nearly 20-countries across four continents. He has led the design of new resorts, communities, & mixed-use developments for Colony Capital, Sorouh, EMAAR, Kingdom Holdings, Qatari Diar, International Capital Trading, SZ Eliades Leisure, Pellas Development Group, SP Land and E2M Partners, LCR (now Fraser's Property Development), Extell, Princeton University, and numerous private clients. His commitment to understanding how conditions in the built environment may drive a health and wellness-based design paradigm has guided his most recent professional efforts, including his leadership of the firm's sponsored research at the University of Virginia's Center for Design & Health. In 2016, Tim was named Managing Principal of Hart Howerton. Tim is an active member of ULI's Global Exchange Council, has served as a guest critic at Kent State University's architecture program in Florence, Italy, and worked as a course aide at the University of Pennsylvania and as a teaching assistant at the University of Notre Dame.

## **Edward T. McMahon**

Senior Resident Fellow  
Urban Land Institute  
Washington, DC  
[Ed.McMahon@uli.org](mailto:Ed.McMahon@uli.org)



As the Senior Fellow for Sustainable Development, Ed McMahon leads ULI's worldwide efforts to conduct research and educational activities related to environmentally sensitive development policies and practices. He is also a senior staff adviser for ULI's Building Healthy Places Initiative, and is a sought-after speaker and thinker on health and real estate. Before joining ULI in 2004, McMahon spent 14 years as the vice president and director of land use planning for the Conservation Fund in Arlington County, Virginia, where he helped protect more than 5 million acres of land of historic or natural significance. McMahon is also the cofounder and former president of Scenic America, a national nonprofit organization devoted to protecting America's scenic landscapes. Before that, he taught law and public policy at Georgetown University Law Center for nine years, and served in the U.S. Army, both at home and abroad. McMahon serves on several advisory boards and commissions, including the National Trust for Historic Preservation, Preservation Maryland, the Governor's Institute for Community Design, the Doris Duke Charitable Fund, and the Orton Family Foundation. He has an MA in urban studies from the University of Alabama at Birmingham and a JD from Georgetown University Law School.

## **James A. Moore**

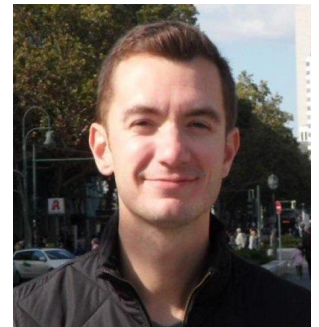
Principal  
Jacobs Advance Planning Group  
Tampa, Florida  
[James.Moore2@jacobs.com](mailto:James.Moore2@jacobs.com)



James Moore has over 25 years of technical and managerial experience and leadership in community planning, redevelopment consulting, architecture and urban design. As a Principal with Jacobs, he is helping lead the global growth of the company's urban design, redevelopment consulting and community planning practices. Prior to joining Jacobs in October 2014, James spent 14 years as a Senior Vice President with HDR, leading their community planning and urban design business unit. James has a deep understanding of the best practices in planning, urban design and real estate development, including the need to balance physical development and redevelopment with economic growth and socio-cultural advancement. He has particular expertise in organizing and managing complex urban redevelopment projects, including those focusing on sustainability, urban revitalization and/or transit-oriented development. James received his Ph.D. from the University of Pennsylvania, and also holds degrees from MIT, including an MS in Real Estate Development. James is active locally and nationally with the AIA, APA, CNU and ULI. A twenty-two year member of ULI, he is the past Chair of ULI Tampa Bay and the current chair of ULI's Urban Revitalization Council. He lectures and writes regularly on urban redevelopment, community sustainability, urban design, and related topics.

## **Matt Norris**

Senior Associate, Content  
Urban Land Institute  
Washington, DC  
[matt.norris@uli.org](mailto:matt.norris@uli.org)



Matthew Norris supports the Building Healthy Places Initiative and works on projects linking health, sustainability and development. He previously worked at the Tri-State Transportation Campaign where he focused on improving access to safe, reliable and equitable modes of transportation throughout southern New Jersey and the Greater Philadelphia area. Matt earned his Master's in City and Regional Planning from Rutgers University-New Brunswick in 2010, where he focused on international development and comprehensive planning. Matt also holds a B.A. in Sociology from the University of Kansas.



## Jared E. Oakes

Partner  
Benesch  
Cleveland, Ohio  
[JOakes@beneschlaw.com](mailto:JOakes@beneschlaw.com)



Jared Oakes is the President and Managing Director of Kaleidoscope Development Advisors, a subsidiary of Benesch. He has extensive experience advising REITs and large developers with large-scale real estate development and redevelopment projects throughout the United States. Jared leads the KDA team in connection with developing and implementing strategies for the use of real estate as a catalyst for improving health and wellness. Jared also serves on the national advisory board for the Building Healthy Places Initiative of the Urban Land Institute (ULI) which is comprised of leaders and experts from the fields of real estate, health, and advocacy and provides strategic guidance to ULI with respect to the use of real estate to foster healthier communities. Jared is the former Chairman of the Cleveland District Council of ULI. He is a member of International Council of Shopping Centers (ICSC) and is a frequent speaker at real estate industry conferences. Jared received his B.A. from Mercyhurst University with a dual major in accounting and finance. He earned his J.D. and M.B.A. from Case Western Reserve University

## Bill Odle

Strategic Planning Director  
TBG Partners  
Houston, Texas  
[bill.odle@tbg-inc.com](mailto:bill.odle@tbg-inc.com)



Bill is the Strategic Planning Director at TBG Partners, a firm of 140 landscape architects and planners based throughout Texas and in Florida. Bill serves on TBG's board of directors and oversees strategic planning for firm-wide initiatives. Odle first joined TBG in 1995 and his vision has been integral to TBG's sustained growth, including embracing a more holistic, story-based design approach that prioritizes environmental, economic and social criteria. He holds a Bachelor of Landscape Architecture from Oklahoma State University. Bill is also passionately involved in several professional and community organizations, including significant active involvement with the Urban Land Institute (ULI) as the chairman of the board for the Houston ULI District Council and the national Vice-Chair of the Public Private Partnership Council. Bill also sits on the board of Scenic Houston as well as the advisory board for the University of Houston C.T. Bauer College of Business Graduate Real Estate Program.



Building Healthy Places Interest Forum | October 24, 2016 | Dallas, TX

## Taylor Pankonien

Associate  
Hart Howerton  
New York, New York  
[tpankonien@harthowerton.com](mailto:tpankonien@harthowerton.com)



Taylor is a planner with 10 years of experience working on resort and residential community master plans. She is currently serving as Project Manager for the master planning and development strategy for Walsh, a new community in Fort Worth, Texas and the master plan for Danzante Bay, a resort in Loreto, Mexico. Taylor has contributed to many of the firm's large master plans, including the entitlements strategy and master planning for the St. Joe Company's landholding in the Florida Panhandle; the master plan for Cayo Largo Resort in Puerto Rico; the Peninsula Master Plan for Pearl Island, Panama; and the master plan for Adelaar Resort in New York. Taylor earned a B.A. in International Relations from Brown University and a Master's in City and Regional Planning from the University of Pennsylvania.

## Roger Platt

President  
U.S. Green Building Council  
Washington, DC  
[rplatt@usgbc.org](mailto:rplatt@usgbc.org)



As President of the U.S. Green Building Council, Roger Platt is responsible for overseeing the policy aspects of the increasingly global adoption of green building and urban development practices, including those recognized by the LEED green building program. Roger maintains non-partisan policy relationships with the World Green Building Council, the United Nations Environment Program, the Natural Resources Defense Council, and the C40-Clinton Climate Initiative among others. Roger is the voice of USGBC before federal and state agencies, on Capitol Hill, in state capitals, city halls and county commissions across the country. He is USGBC's liaison responsible for advancing its views on the environmental and market benefits of green schools, green affordable housing, sustainable communities, and green buildings. Before joining USGBC, Roger spent 15 years as senior vice president and counsel with the Real Estate Roundtable, and prior to that was a consultant to President William Jefferson Clinton's then newly formed Corporation for National and Community Service. He is a graduate of Harvard University and the University of San Francisco School of Law and is a member of the Urban Land Institute (ULI), where he helped found and chaired the ULI Sustainable Development Council from 2001-2004, and the ULI Responsible Property Investment Council from 2010-2012. Roger currently serves on the Board of the World Green Building Council where he is chair of the Policy Committee.



Building Healthy Places Interest Forum | October 24, 2016 | Dallas, TX

## Scott Pollack

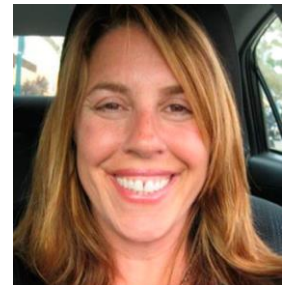
Principal  
Arrowstreet, Inc.  
Boston, Massachusetts  
[pollack@arrowstreet.com](mailto:pollack@arrowstreet.com)



As a principal at Arrowstreet who excels at developing design solutions for contradictory constraints, Scott Pollack is responsible for some of the firm's most complex developments; guiding these challenging projects through planning and approvals. He has also been instrumental in leading Arrowstreet's planning for the U.S. military, such as for the Office of the Secretary Of Defense's Healthy Base Initiative, which aims to improve health outcomes and create a healthier environment for military members and their families. Scott strives to use architecture to meaningfully impact people's lives, which is evident in his design work as well as his philanthropic involvement with numerous New England non-profits: the Next Gen Committee of the Combined Jewish Philanthropies, the Nuestra Comunidad Development Committee, and the Somerville Comprehensive Plan Steering Committee. Scott's propensity to color outside the lines transcends his architectural work and can be seen in his fine art and figure photography. His extensive business and personal travels have brought him abroad to 14 countries in addition to 48 out of the 50 states (leaving just Montana and Tennessee to be explored).

## Roni S. Rudell

360° Marketing Alchemist  
Onit360, LLC  
Annapolis, MD  
[roni@ronirudell.com](mailto:roni@ronirudell.com)



Roni Rudell is a 360° Marketing Alchemist creating master strategies and creative concepts across all consumer touch points. Authentically connecting target audiences to brands, Roni's approach is hardly standardized and never routine. CEOs and CMOs often contact Roni to provide solutions to difficult and far-reaching problems. Since the inception of Web 2.0, Roni has been guiding brands on direct paths through the digital marketing jungle. Her expertise covers strategic insight, digital plans, social plans, content strategies, offline and online integration, experiential marketing and great customer experiences. Roni is a change agent and out-of-the-box creative thinker who thrives in innovative environments. She takes on complex initiatives and pursues them from beginning to end. In addition, Roni coaches clients to become equally forward-thinking, flexible and willing to break down walls. She is a passionate believer that the world can be a better place, and enjoys working with like-minded companies.

## **Dominic Ruiz**

Analyst, Business Development  
Delos Living LLC  
New York, New York  
[dominic.ruiz@delos.com](mailto:dominic.ruiz@delos.com)



Dominic joined Delos with a lifelong affinity for the built environment and a strong cross-disciplinary background encompassing community planning and design, architecture, real estate, and environmental law. Dominic began his career path working alongside 2nd year law school students at the Environmental Protection Agency, providing research assistance to attorneys for land-use litigation. To further his understanding of the built environment, he also worked with Kansas City-based Lane4 Property Group, assisting the development and project management teams while seeing projects evolve from the ground up. Following his experience in real estate development, Dominic worked with Manhattan-based consulting firm, The Weitzman Group, providing financial analysis for real estate appraisal and valuation, as well as economic and demographic research for marketability and feasibility studies. Dominic holds a master's degree in Regional and Community Planning from Kansas State University and is a member of the Municipal Art Society, Urban Land Institute, and American Planning Association.

## **Howard M. Schlesinger**

Principal  
Meridian Development Partners  
New York, New York  
[howards@meridiandp.com](mailto:howards@meridiandp.com)



Howard is the co-founder and partner of Meridian Development Partners. He is a registered architect and manages the repositioning and redevelopment of the properties in the Meridian portfolio. He is also co-founder Red River Asset Management which invests in value-add and core-plus office properties and is the EVP and founding principal of The RoseMark Group, a real estate brokerage company focused on the providing residences for professional athletes and people in the public eye. Previously, Howard was a founding partner of Schlesinger, Loffredo, Brooks Architects, P.C., where he designed and managed a diverse portfolio of projects from corporate office design, residences, restoration, medical offices, veterinary hospitals and recreational facilities. Howard graduated from City College of New York with a Bachelor in Architecture, and is an executive board member of the Architecture Alumni Association of the City College of New York. He is a member of the American Institute of Architects. He is also a member of ULI's Redevelopment and Reuse Council and a Board member of RENT, a professional Real Estate organization.

## Elizabeth Shreeve

Principal  
SWA Group  
Sausalito, California  
[EShreeve@SWAGroup.com](mailto:EShreeve@SWAGroup.com)



Elizabeth Shreeve is Principal of SWA, an internationally recognized landscape architecture, urban design and planning firm. Since joining SWA's Sausalito office in 1984, she has focused her practice on urban infill and revitalization, community and campus master planning, public outreach and communications. Elizabeth is currently involved with mixed use communities, hi-tech and academic campuses, and urban open space projects in the US and overseas, working closely with multi-disciplinary teams and public and private clients to translate physical, economic, and cultural factors into enduring designs and policy strategies. Elizabeth is the author of numerous professional articles including Open Spaces and Active Transportation (Urban Land, Jan/Feb 2014). She serves as assistant chair of ULI's Sustainable Development Council and chair of the San Francisco District Council's Building Healthy Places committee. For the Colorado Health Foundation, Elizabeth was a member of a 2013 Advisory Services panel in Denver's Westwood neighborhood and she is currently working with ULI on a handbook of best practices to promote health in the built environment. Elizabeth is a member of the American Institute of Certified Planners, ASLA, SPUR, and SCUP. She earned a master of landscape architecture from Harvard University Graduate School of Design and a bachelor of arts cum laude in geology from Harvard College.

## Ronald I. Silverman

Senior Partner  
Cox, Castle & Nicholson LLP  
Los Angeles, California  
[rsilverman@coxcastle.com](mailto:rsilverman@coxcastle.com)



Ron is a senior partner with the real estate law firm of Cox, Castle & Nicholson with offices in Los Angeles, San Francisco and Irvine. Ron enjoys brainstorming with clients to create strategies that lead to practical business solutions. In addition to his land use background, Ron has in depth experience with purchase and sale transactions, leasing, master planned communities and financing. Since 1988, Ron has been actively involved (at both the national and local levels) with ULI. As a member of ULI, Ron has served as a ULI Trustee, Chair of the Audit Committee, Chair of the Public Private Partnership Council, a Counselor to the District Council Program and Chair of the Los Angeles (ULI-LA) District Council. At the local level Ron serves as a member of the ULI-LA Advisory Board and Governance and Management Committees, as Co-Chair of Mission Advancement, as a member of ULI-LA's Building Healthy Places Steering Committee and as Co-Chair of the Health Networks Committee.



Building Healthy Places Interest Forum | October 24, 2016 | Dallas, TX

## David Thorpe

Managing Director, Construction & Design  
Silverwest Hotels  
Denver, Colorado  
[dthorpe@silverwesthotels.com](mailto:dthorpe@silverwesthotels.com)



David Thorpe joined Silverwest in 2016 and is responsible for overseeing Silverwest's new developments and renovation projects at the company's various hotel properties. Prior to joining Silverwest, Dave served as vice president of Shaw Construction in Denver. His career also includes positions as Development Executive overseeing a large urban mixed-use project in Denver, and Vice President of Development for Vail Resorts Development Company. At Vail Resorts, Dave oversaw the redevelopment of Jackson Hole Golf and Tennis Club and worked on the development of The Arrabelle at Vail Square, a 500,000-square-foot mixed-use development and luxury hotel. He also provided technical construction support services to RockResorts for renovations and hotel capital expenditure projects. Dave received a Masters in Business Administration from The University of Michigan's Ross School of Business.

## Lynn Thurber

Chairman  
LaSalle Investment Management  
Chicago, Illinois  
[lynn.thurber@lasalle.com](mailto:lynn.thurber@lasalle.com)



Lynn Thurber is the Chairman of LaSalle Investment Management, a global real estate money management firm with approximately \$55 billion of assets under management, investing in private real estate as well as publicly-traded real estate companies on behalf of institutional and individual investors. In her role as Chairman, Ms. Thurber advises the firm's senior management team and heads its global committees on sustainability and risk management for its portfolios worldwide. She also chairs the Jones Lang LaSalle committee for the firm's co-investment activity. Ms. Thurber is also Chairman of the board of Jones Lang LaSalle Income Property Trust, an SEC registered, non-traded REIT. Ms. Thurber is a member of the Board of Duke Realty Corporation (NYSE:DRE), a U.S. publicly traded REIT, a member of the Board of Investa Property Group, an Australian based real estate owner, developer and fund manager. Prior to becoming Chairman, Ms. Thurber was the Chief Executive Officer of LaSalle Investment Management from March 2000 to December 2006 and Co-President from December 1994 to March 2000. Prior to Alex Brown, Kleinwort Benson (ABKB) Realty Advisors' merger with LaSalle Partners in 1994, Ms. Thurber was Chief Executive Officer of that company. Before joining ABKB in 1992, she was a Principal at Morgan Stanley & Co. Ms. Thurber earned an M.B.A. from Harvard Business School and an A.B. from Wellesley College. Ms. Thurber is the immediate past global Chairman of the board of ULI. She formerly chaired the Pension Real Estate Association, and is also a past member of the Board of Directors and Executive Committee of the Association of Foreign Investors in Real Estate, the Board of the Toigo Foundation and a past member of the Real Estate Information Standards Board. She is currently a member of The Chicago Network and the Wellesley College Business Leadership Council.