

ULI Fall Meeting 2017 | Los Angeles, CA

## Bio Book

# Randall Lewis/Building Healthy Places Interest Forum



ULI Fall Meeting

October 23–26, 2017 | Los Angeles, CA



Urban Land  
Institute

Building Healthy  
Places Initiative

## Table of Contents

Eddie Arslanian .....	4
Dawit Beru .....	4
Christopher Bodnar.....	5
Hunter Buwick.....	5
Colleen Carey .....	6
Diane Caslow.....	6
Aysha Cohen .....	7
Clare De Briere.....	7
Chris Dunn.....	8
Larry D. Frank, PhD, AICP, ASLA.....	8
Teri Frankiewicz .....	9
Stephen B. Friedman, FAICP, CRE.....	9
Jose Gardea.....	10
Kathryn Gardow.....	10
Alyia Gaskins .....	11
Calvin Gladney, LEED AP .....	11
Lorenzo Gonzalez.....	12
Billy Grayson .....	12
Ross Guttler.....	13
Juanita Hardy .....	13
Kevin O'Hara .....	14
Mike Horst.....	14
Jeremy Hudson .....	15
Daron "Farmer D" Joffe.....	15
Michael Keinath .....	16
Christopher Kurz .....	16
Randall Lewis.....	17
Brian Lomel, PE, LEED Fellow, CxA, WELL AP .....	17
Rachel MacCleery .....	18
Tim McCarthy.....	18
Edward T. McMahon.....	19
Jonathan Nettler .....	19
Matt Norris.....	20

Randall Lewis/Building Healthy Places Interest Forum | October 23, 2017 | Los Angeles, CA

Sam Polk.....	20
Ashley Pollock .....	21
Colin Powell.....	21
Sandra Ramirez .....	22
Rodolfo Rodríguez.....	22
Sharon Roerty .....	23
Matt Romero, ASLA.....	23
Dominic Ruiz .....	24
Elizabeth Shreeve.....	24
Reema Singh .....	25
Christopher Smith .....	25
Melani V. Smith, AICP .....	26
Mette Søs Lassenen.....	26
Silvia Saucedo, LEED AP .....	27
Stephanie Stuckey.....	27
Rives Taylor, FAIA, LEED AP BD+C.....	28
Dana Terebessy.....	28
Jonathan Watts, AIA .....	29
Marja Williams .....	29
Jennifer York .....	30

## Eddie Arslanian

Principal

Ramboll Environ

Los Angeles, California

[EArslanian@ramboll.com](mailto:EArslanian@ramboll.com)

Eddie Arslanian is a Principal with Ramboll Environ in Los Angeles, California and has 20 years of professional experience in providing technical and management expertise in environmental consulting and engineering. A key part of Eddie's practice is to assist his real estate clients revitalize blighted environmentally impacted properties into beneficial uses. As part of the firm's Liveable Cities (LC) practice, Eddie collaborates with the firm's international LC practitioners to provide solutions presented by global challenges caused by today's megatrends such as urbanization, globalization, resource scarcity, climate change, demographic changes and environmental challenges. Eddie holds a BS in civil/environmental engineering from the University of California at Irvine, an MS in civil/environmental engineering from the University of California at Los Angeles, and an MBA from the University of Southern California.



## Dawit Beru

President

Johns Hopkins University

Baltimore, Maryland

[dawitberu@gmail.com](mailto:dawitberu@gmail.com)

Dawit works in the real estate and community development field and is a student in the MS in Real Estate and Infrastructure program at Johns Hopkins University. A Washington, DC native and first-generation American, Dawit's interests include sustainable design and affordable housing development. He is a graduate of Georgetown University and spent five years as a retail planning consultant for airport modernization projects before shifting his focus to residential development.



## Christopher Bodnar

Executive Vice President

CBRE

Denver, Colorado

[chris.bodnar@cbre.com](mailto:chris.bodnar@cbre.com)

Chris Bodnar joined CBRE in 2003 and is an Executive Vice President of the Investment Properties division and co-leads the CBRE Healthcare Capital Markets Group with his business partner Lee Asher. Disciplined in the specialty of Investment Sales, Mr. Bodnar has been involved in the disposition of over 10 million square feet of commercial assets, exceeding a total value of \$7 billion dollars on behalf of his clients since 2010. In 2006, Mr. Bodnar formed CBRE's Healthcare Capital Markets Group (HCMG). This group specializes in providing healthcare real estate investors with acquisition, disposition and recapitalization strategies; assisting healthcare providers with strategic capital planning (including monetization and capital raising efforts); and advising health systems and physician groups in the developer selection process. He has advised on some of the most notable monetization assignments, including over \$1 billion in value on behalf of one of the largest Catholic health systems in the United States.



## Hunter Buwick

CEO

Anthology Real Estate

Fayetteville, Arkansas

[hbuwick@gmail.com](mailto:hbuwick@gmail.com)

Hunter Buwick is the CEO of Anthology Real Estate. Before joining Anthology, Hunter provided the Specialized Real Estate Group with financial analysis for all projects including acquisitions, new development, and rehabs. In addition, he worked with lenders and equity sources to raise capital for these projects. With a passion for health, Hunter assisted in incorporating healthy design principles and amenities into Specialized's projects. Before joining Specialized, Hunter worked in multi-family brokerage with extensive experience in the Arkansas and Oklahoma markets closing over \$41 million in sales and over 1,250 total units. Hunter holds a BSBA from the University of Arkansas where he also played on the Razorback golf team.





## Colleen Carey

President

The Cornerstone Group

Minneapolis, Minnesota

[ccarey@tcgm.com](mailto:ccarey@tcgm.com)

Colleen founded The Cornerstone Group in 1993, after 10 years at Twin Cities Housing Corporation and Turner Development Corporation. Her vision still holds true today – to transform communities through socially responsible development projects. As President, Colleen is responsible for overseeing all corporate and financial operations including acquisitions, new development, redevelopment, asset management, property management, strategic planning and community relationship building. She's overseen the development or rehabilitation of 15 properties totaling over a \$250 million dollars. These projects represent a mix of housing types, ranging from 30 units to 200 units, affordable housing to market rate to luxury condos. She has also worked on rental and for-sale developments and has completed a number of restorations of historically significant buildings.



## Diane Caslow

Vice President of Strategic and Business Planning

MedStar Health

Columbia, Maryland

[diane.l.caslow@medstar.net](mailto:diane.l.caslow@medstar.net)

Diane L. Caslow is the vice president of Strategic and Business Planning for MedStar Health, including strategic planning, business planning, market analytics, consumer insights and market research and community health. Previously, she was the vice president of Planning for Helix Health and held positions in Planning and Marketing at MedStar Good Samaritan Hospital and St. Joseph Hospital in Baltimore. Caslow is the past president of the American Hospital Association (AHA) Society for Health Care Strategy and Market Development (SHSMD) and served on the AHA Long Range Policy Committee. She chaired the SHSMD annual conference, served as a faculty member for the Essentials of Strategic Planning seminars. She participated on numerous committees and task forces, including Bridging Worlds-The Future Role of the Healthcare Strategist. She has served on a number of non-profit boards in Maryland, including Greater Baltimore Committee Leadership, Maryland Society for Health Care Planning and Marketing, Children's Guild, March of Dimes, Baltimore Pediatric Aids. She was selected as part of the first class for the Washington Urban Land Institute's Leadership Program and is faculty for the Health Day program.



## Aysha Cohen

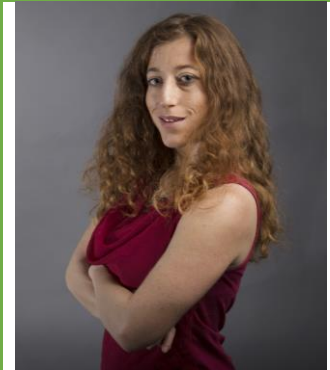
Senior Associate, Content

Urban Land Institute

Washington, DC

[aysha.cohen@uli.org](mailto:aysha.cohen@uli.org)

Aysha Cohen supports the Building Healthy Places Initiative's projects linking health, sustainability and development. She is the contributing author of several ULI publications, including "[Harvesting the Value of Water](#): Stormwater, Green Infrastructure and Real Estate" and "[Building Healthy Corridors](#): Strategy and Resource Guide." Prior to ULI, she conducted research as a Fulbright Eco-Leadership scholar in Canada and as a UCLA Institute for Transportation Studies (ITS) scholar in Los Angeles. Her research for the District Department of Transportation (DDOT), "Equity in Motion: Bikeshare in Low-Income Communities", geospatially and statistically analyzed 84 factors to forecast bikeshare ridership at the station-level in high poverty areas of Washington, DC. She is a co-founder of "The Olive Tree Initiative: Armenia-Turkey", an interdisciplinary travel-study conflict resolution group. She earned her Masters of Urban & Regional Planning (MURP) at UCLA and speaks Spanish, Turkish and English.



## Clare De Briere

Founder

C+C Ventures

Los Angeles, California

[cdebriere@cplusventures.com](mailto:cdebriere@cplusventures.com)

Clare De Briere is a native Angeleno and has spent her career creating special places for the citizens and visitors of Los Angeles.

Clare joined The Ratkovich Company as a summer intern in 1991 after graduating from UCLA and worked her way through property management, leasing, construction, financing and development management while earning her graduate degree at USC's prestigious Lusk Center for Real Estate. In her career with the company she has overseen the acquisition, entitlement, planning, development and/or disposition of millions of square feet from The Wiltern Theatre, 5900 Wilshire, 800 Wilshire, The Alhambra, The Hercules Campus in Playa Vista and, most recently, The Bloc in downtown Los Angeles. Clare retired from the Company after 26 years, the last decade of which she spent as its Chief Operating Officer and Executive Vice President. She remains affiliated with the Company through its Advisory Board.



## Chris Dunn

President

Certified Healthy

Denver, Colorado

[cdunn@certifiedhealthy.life](mailto:cdunn@certifiedhealthy.life)

Chris Dunn is President of Certified Healthy. Certified Healthy takes a holistic view of the factors impacting human health and assigns relative value to their importance. It gives property owners, tenants, land use planners and regulators a practical way to guide decision making and allocate resources. The non-profit Certified Healthy was developed to assemble a definitive collection of healthy criteria for communities and buildings. Certified Healthy quantifies the qualitative components of creating a healthy place, providing designs and built projects with a score and recommendations on methods to improve the healthy aspects of a project.



## Larry D. Frank, PhD, AICP, ASLA

President, Urban Design 4 Health

Professor, University of British Columbia

New York, New York

[ldfrank@ud4h.com](mailto:ldfrank@ud4h.com)

Dr. Frank is the president of Urban Design 4 Health, Inc., and a Professor in Sustainable Transportation at the University of British Columbia. He specializes in the interaction between land use, travel behavior, air quality; and health and the fuel consumption and climate change impacts of urban form policies. He has done fundamental, groundbreaking research on the effects of neighborhood walkability on travel patterns and sustainability for 20 years and has led over \$20 million in funded research and published over 100 peer reviewed articles and reports on these topics for a diverse range of journals such as Transportation, Journal of the American Planning Association, American Journal of Preventive Medicine, and Social Science and Medicine. Dr. Frank works directly with local, regional, provincial or state, and federal agencies to help translate results from research into evidence based tools that provide direct feedback on the health and environmental impacts of alternative transportation and land development proposals.





## Teri Frankiewicz

Vice President of Community Development

Crown Community Development

Naperville, Illinois

[tfrankiewicz@crown-chicago.com](mailto:tfrankiewicz@crown-chicago.com)

Teri has worked the last 23 years as a Vice President for Crown Community Development and has traveled extensively, analyzing and facilitating property acquisitions and development in the Chicago, Florida, Arizona, Texas, Washington and Tennessee markets. Some of the recent communities which she has been engaged with include the 2,000-acre Seven Oaks community in the Tampa Bay Area, 2,000-acre Black Diamond community in Seattle, the 80-acre Singleton Property in Nashville and several properties in the Austin and San Antonio MSAs. Teri recently concluded the master planning and entitlement efforts for a 6,800-acre long-term agricultural Crown family partnership in the Tucson Arizona area and manages a 3,000-acre agricultural asset in Santa Barbara, California. She is a Past-District Council Chair for the Urban Land Institute in Chicago and a Past Chair of the national Community Development Council Silver. Teri also serves as an Urban Land Institute Trustee and sits on The Advisory Board for the Daniel Rose Center for Public Leadership. Teri was recently appointed a Trustee for the Chicago Public Broadcasting Station in Chicago, WTTW/WFMT. Teri received both her B.A. in Economics and Communications and her M.B.A. from the University of Virginia.



## Stephen B. Friedman, FAICP, CRE

President

SB Friedman Development Advisors

Chicago, Illinois

[sbf@sbfriedman.com](mailto:sbf@sbfriedman.com)

Steve Friedman brings more than 40 years of experience in real estate and development advisory services. He has authored several articles, spoken at numerous state and national association conferences, and served on several community assistance panels. He is a member of the Counselors of Real Estate, a member of the College of Fellows of the American Institute of Certified Planners, and a full member of the Urban Land Institute (ULI). His civic affiliations include the Civic Federation, University of Illinois at Chicago College of Urban Planning and Public Affairs Board of Visitors, and the ULI Public-Private Partnership Council. He has served as series chairman for the ULI Chicago District Council's "An Agenda for Growth of the Chicago Region," and as chair of the ULI Chicago District Council from 1998 to 2000. In April 2013, he received the James Felt Creative Counseling Award of the Counselors of Real Estate for his development advisory role on The Shops and Residences of Uptown Park Ridge project. Steve holds a B.A. from Goddard College in Plainfield, VT and an M.S. in Urban and Regional Planning from the University of Wisconsin-Madison.



## Jose Gardea

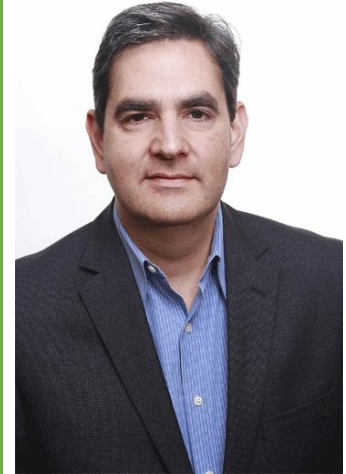
Founder and President

Urbanism Advisors

Los Angeles, California

[josegardea@hotmail.com](mailto:josegardea@hotmail.com)

Jose Gardea is the President of Urbanism Advisors. Urbanism Advisors facilitates, develops and implements action plans for economic and business development through Public/Private Partnerships. He previously served for 12 years as Chief of Staff for the First Council District of the City of Los Angeles, and was a Senior Field Deputy for 6 years prior to that. He received a B.S. in Political Science from UCLA.



## Kathryn Gardow

Chief Operations Officer

Metro AG Strategies

Seattle, Washington

[kathryn@metroagstrategies.com](mailto:kathryn@metroagstrategies.com)

Kathryn Gardow brings more than twenty years of accomplishments in diverse land use, public works, infrastructure and organizational leadership initiatives. Her expertise as a civil engineer, land use planner, and regulatory expert includes notable large-scale master-planned communities in the Puget Sound region. Dedicated to preserving and keeping organic farmland productive in perpetuity, Kathryn served as Executive Director of PCC Farmland Trust. In that capacity, she grew the scope and impact of the nation's only organic farmland trust to a million-dollar operation. Kathryn is widely known as passionate and effective in regional and Washington policy advocacy on behalf of local farming and strengthening our regional food system. She serves in diverse capacities as a strategic partner among government, business and philanthropy, including leadership on the Board of Washington Sustainable Food and Farming Network and past Director of PCC Natural Markets. Equally active in her northeast Seattle neighborhood, Kathryn is a Director of the Burke Gilman Place Public Development Authority. She holds a Master of Business Administration from the University of Washington and a Bachelor of Science in Civil Engineering from Union College.



## Alyia Gaskins

Masters student, Urban and Regional Planning

Georgetown University

Alexandria, Virginia

[mami.hara@seattle.gov](mailto:mami.hara@seattle.gov)

Alyia is the Assistant Director of Programs/Health at the Center for Community Investment. Prior to joining the Center, she worked as Senior Associate at the National League of Cities (NLC) Institute for Youth, Education, and Families supporting mayors and city leaders in engaging residents, building multi-sector collaborations, and advancing policies to build healthier, more equitable communities. Alyia began her career as a Policy and Program Associate at D.C. Hunger Solutions, an initiative of the Food Research and Action Center. Alyia has a B.A. in Medicine, Health and Society from Vanderbilt University and a Masters of Public Health from the University of Pittsburgh. She is pursuing a Masters of Urban and Regional Planning from Georgetown University with a concentration in Housing, Community, & Economic Development.



## Calvin Gladney, LEED AP

Senior Visiting Fellow for Social Equity, Urban Land Institute

Managing Partner, Mosaic Urban Partners, LLC

Washington, District of Columbia

[cgladney@mosaicurban.com](mailto:cgladney@mosaicurban.com)

The Urban Land Institute has engaged Calvin Gladney through his firm, Mosaic Urban Partners, LLC, to serve as ULI's Senior Visiting Fellow for Equity. Calvin will help the organization reflect on how it thinks about equity and advise on opportunities to integrate social, economic, and health equity considerations into ULI's convenings, communications, and content. Calvin Gladney has spent the past 15 years working around the country to ensure that the revitalization of neighborhoods and corridors is done equitably, and that people in those areas have an equal shot at participating in the prosperity that can result from change. Mr. Gladney is Managing Partner of Mosaic Urban, and is a public-private partnership strategist, real estate developer, and trusted advisor to organizations seeking to sustainably transform urban communities. He is a trustee of ULI and a member of its national Public Private Partnership Council.



## Lorenzo Gonzalez

Medical degree candidate, University of California San Diego

Masters student, Planning, University of Southern California

Anaheim, California

[gonzalla@usc.edu](mailto:gonzalla@usc.edu)

Lorenzo has worked on various projects that focus on advancing access to higher education and health equity throughout his career. During the last four years, Lorenzo has been caring for the binational San Diego – Tijuana community. Lorenzo has been recognized by the City of Santa Ana for his contributions on the Wellness Corridor, is currently involved with Community Health Councils on developing healthy environments in South Los Angeles, and is a Land Use Health Ambassador for Physicians for Social Responsibility. Lorenzo credits his current success to his Mexican immigrant parents who instilled in him a work ethic around sacrifice, resilience, and passion. Lorenzo received a Bachelor's degree in Biochemistry and Molecular Biology from Chapman University. He is currently finishing his Medical Degree from UC San Diego and a Master's Degree in Planning from the University of Southern California.



## Billy Grayson

Executive Director, Center for Sustainability and Economic Performance

Urban Land Institute

Washington, DC

[Billy.Grayson@uli.org](mailto:Billy.Grayson@uli.org)

Billy Grayson has ten years of experience in developing and directing sustainability strategies. Most recently, he served as founder and principal of Bent Branch Strategies in Washington, D.C., which aids in supporting sustainability program development and managing sustainability reporting for clients in real estate, health care, consumer products and electronics. Prior to founding Bent Branch, Grayson was director of corporate sustainability at Liberty Property Trust in Malvern, Pennsylvania, where he oversaw Liberty's sustainability strategy for more than 700 buildings in 14 markets, including standards for sustainability in development, property management, and sustainability reporting and communications efforts. He worked with city managers and building tenants to accelerate investment in onsite renewable energy projects, and provided a "playbook" for tenants to support their energy efficiency efforts and pursue their own onsite renewable energy projects. Grayson also served as vice president for social and environmental sustainability at the Electric Industry Citizenship Coalition in Washington, D.C., where he managed a global social compliance program and led initiatives to address e-waste, workers' rights, and industry alignment with the United Nations Guiding Principles on Business and Human Rights.



## Ross Guttler

Vice President

Delos

New York, New York

[ross.guttler@delos.com](mailto:ross.guttler@delos.com)

Ross has spent 15 years in investment, development and advisory roles across multiple product sectors. At Delos, Ross manages strategic relationships among Fortune 100 clients as well as institutional investors, owners and landlords. Having joined Delos in the early stages, he has led the growth of several business lines. In addition, Ross serves in an advisory capacity to a NY-based startup focused on developing spectral sensors for the built environment. Prior to joining Delos, Ross founded and managed the commercial division of ROI Properties, a brokerage and asset management firm that caters to distressed portfolios. He advised financial institutions, fiduciaries and receiverships on risk allocation and exit strategies for office, industrial and retail assets. Previously, he worked for the ViaWest Group, a commercial investment, development and services firm with a primary focus on value-add and opportunistic office, industrial and multi-family properties. Ross is a former board member of the Urban Land Institute and has held leadership roles in numerous other industry and non-profit organizations. He received a B.S. in Economics from Duke University and an M.B.A. from Duke University's Fuqua School of Business.



## Juanita Hardy

Senior Visiting Fellow for Creative Placemaking

Urban Land Institute

Washington, DC

[juanita.hardy@uli.org](mailto:juanita.hardy@uli.org)

Juanita Hardy supports the Institute's Building Healthy Places Initiative by deepening and broadening ULI's focus on creative placemaking. Ms. Hardy founded Tiger Management Consulting Group, LLC, a global training and business consulting services firm, after retiring from IBM in 2005. She has over 41 years of business experience, including 31 years with IBM, and over 35 years in the arts as a nonprofit leader, trustee, collector, and patron of the arts. She is the former Executive Director of CulturalDC, a nonprofit committed to making space for artists and art organizations and fostering cultural and economic vibrancy in communities through its creative placemaking services. While at CulturalDC, she worked closely with area developers to integrate arts and culture into development projects across the Washington, D.C., area. She has also served as an awards program juror for the ULI Washington District Council's Real Estate Trends Conference for two years. Ms. Hardy has served since 2006 as an executive coach with Right Management, a global human capital development firm, and has served on many nonprofit art boards dating to the 1980s. She co-founded Millennium Arts Salon, an art education initiative, in 2000.





## Kevin O'Hara

Vice President of Urban and Government Affairs

National Recreation and Park Association (NRPA)

Washington, District of Columbia

[kohara@nrpa.org](mailto:kohara@nrpa.org)

Kevin O'Hara is NRPA's Vice President of Urban and Government Affairs where he oversees NRPA's federal advocacy efforts with Congress and the Administration. He also leads the organizations efforts to promote parks and recreation agencies as leading problem solvers in American cities. Most recently O'Hara was the Manager of Government Affairs for the American Society of Landscape Architects where he oversaw advocacy efforts on urban parks, green infrastructure, children's access to nature, and more. O'Hara has a Bachelor's Degree in Political Science from the University of Wisconsin-Madison, and a Masters in Urban and Regional Planning from the University of Minnesota's Hubert H. Humphrey School of Public Affairs. O'Hara, his wife, and 2 kids live in the District of Columbia. His free time pursuits include hiking, travel, and good food.



## Mike Horst

Retired, Former Senior VP for the ULI Larson Leadership Initiative

Urban Land Institute (Retired)

New York, New York

[michaellhorst@gmail.com](mailto:michaellhorst@gmail.com)

Michael Horst is retired and is living in New York City. He was Senior Vice President for the ULI Robert C. Larson Leadership Initiative at the Urban Land Institute. Since beginning his career in 1970, he has also been a real estate consultant, educator and developer. His consulting career included senior positions with Economics Research Associates, PBR, EDAW and International Tourism and Resort Advisors. He has created and taught multi-disciplinary classes at Harvard, UC Berkeley and UCLA and was an Adjunct (Full) Professor at the University of Southern California. He was also co-founder of Shenoa Retreat and Learning Center, an eco-resort in Northern California demonstrating ecologic, economic and community sustainability and innovative building and financing technologies such as straw bale construction and the Land Stewardship program. Throughout his career he has been an active participant as a full member of the Urban Land Institute, serving as co-founder of the Sustainable Development Council and as Vice Chair of the Program Committee. He is also a Governor (Developer level) of the ULI Foundation. He has a BA degree in economics from University of California Santa Barbara (1967), an MBA from Stanford University (1969) and was a Loeb Fellow at the Harvard Design School (1982). He serves on the Capital Campaign of the Harvard Graduate School of Design and the Loeb Fellowship Alumni Council and is a member of the board of the New York Open Center.



## Jeremy Hudson

Cofounder and CEO

Specialized Real Estate Group

Fayetteville, Arkansas

[jeremy@specializedreg.com](mailto:jeremy@specializedreg.com)

Jeremy Hudson is CEO of Specialized Real Estate Group in Fayetteville, Arkansas, a company focused on developing and managing walkable, healthy, and sustainable multifamily communities. He has developed over 1.3 million square feet of apartment buildings that are registered for LEED certification, including the award-winning Eco Modern Flats. In October of 2014, Jeremy was named to the Urban Land Institute's first-ever 40 Under 40 class, which recognizes the best and brightest young land use professionals from around the globe. Jeremy is a graduate of John Brown University with a degree in Construction Management and Business Administration.



## Daron "Farmer D" Joffe

Director of Agricultural Innovation and Development, The Leichtag Foundation

Founding Director, Coastal Roots Farm

Encinitas, California

[farmerd@leichtag.org](mailto:farmerd@leichtag.org)

Daron is the Foundation's Director of Agricultural Innovation and Development, where he manages the strategic planning, community engagement and operations of the 67.5 acre Ranch property. He is also leading the launch of the Jewish community farm and all other farming projects; developing new tenant and business relationships; and participating in the Foundation's management team. Daron is a nationally recognized organic/biodynamic farmer, educator, speaker and eco-entrepreneur. He is the author of the acclaimed book *Citizen Farmers: The Biodynamic Way to Grow Healthy Food, Build Thriving Communities and Give Back to the Earth*. He is the founder of Farmer D Organics and Farmer D Consulting and has spent the past 20 years designing and building biodynamic farms and gardens all over the country. From 2003-2005, Daron was a Joshua Venture Group Fellow for his project Gan Chaim which provided innovative programming for Jewish Community Centers, camps and schools through the creation of hands-on educational therapeutic gardening experiences.



## Michael Keinath

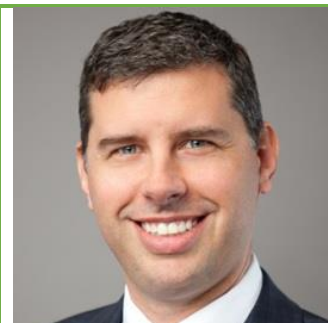
Principal

Ramboll Environ

San Francisco, California

[mkeinath@ramboll.com](mailto:mkeinath@ramboll.com)

Michael Keinath has over 15 years of experience in environmental science and engineering, with special emphasis on air quality and climate change, human health risk assessment and product stewardship. He has advised clients from various industries, including ports and rail, quarries and mines, foundries and recyclers, chemical manufacturers and consumer products suppliers, in addition to property developers and local planning agencies. Michael has estimated emissions and modeled dispersion of numerous sources of airborne contaminants, using the results to conduct human health risk assessments under federal, state and local regulations, including California's Environmental Quality Act (CEQA), Proposition 65 (Prop65) and the Air Toxics "Hot Spots" Program (AB2588). He earned an MSE in chemical engineering and an MSE in environmental engineering from the University of Michigan, and a BS in chemical engineering from Stanford University.



## Christopher Kurz

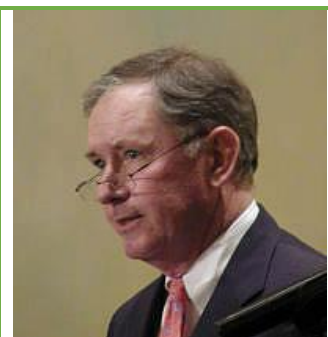
President and CEO

Linden Associates, Inc.

Baltimore, Maryland

[cwkurz@linden-assoc.com](mailto:cwkurz@linden-assoc.com)

Chris Kurz, the President of Linden Associates, has over thirty years of commercial real estate experience. After graduating from The Wharton School MBA program in 1971, Mr. Kurz worked for The Rouse Company. Since 1986, he has been on his own and has developed over 950,000 square feet of office, retail and industrial property in the Washington/Baltimore market. During his career, Mr. Kurz has developed or acquired over 2,300,000 square feet of commercial real estate and has arranged financing of approximately \$750 million, of which \$150 million involved properties in which he held a significant equity position. Between his tenure at Rouse and starting his development company in 1986, Mr. Kurz worked for a bank, mortgage banker and investment banking firm specializing in real estate. He was hired from Rouse by a regional bank in the mid-1970's to work out a portfolio of troubled assets. In 1989, Mr. Kurz started and was the founding Chairman of the Board of Columbia Bancorp and the Columbia Bank. During his tenure the bank became profitable and went public. Today, the bank is a healthy \$1.0 billion financial institution.



## Randall Lewis

Executive Vice President, Marketing

Lewis Management Corp.

Upland, California

[randall.lewis@lewismc.com](mailto:randall.lewis@lewismc.com)

Randall Lewis oversees the sales and marketing operations of the Company. Randall received his B.A. from Claremont McKenna College. He is regarded as an industry leader in promoting the arts, education, healthy living and sustainable development initiatives. He has been President of the Inland Empire Arts Foundation, Secretary of the Los Angeles County Citizens Planning Council, director of the HomeBuilder's Council, and national director of the National Association of HomeBuilders. Randall was named in the Los Angeles Times 2006 "West 100" list as one of the top 100 influential people in southern California. He has also received the California Business Properties Association Champion of the Industry Award and has been inducted into the California Building Industry Association Hall of Fame. Randall is a long time ULI member as well as a Governor of the ULI Foundation. Randall serves on several executive boards, including the USC School of Policy, Planning and Development, the UCLA School of Public Policy, Loma Linda University Medical Center's Orthopedic and Rehabilitation Institute Advisory Council, Cal Poly Pomona's National Development Council, and co-chairs the San Bernardino County Alliance for Education. He is recognized as an expert in the real estate industry and is frequently quoted in various newspapers, magazines and trade journals. Randall has over 30 years of experience in the real estate industry.



## Brian Lomel, PE, LEED Fellow, CxA, WELL AP

Principal/Director of PEAK Institute

TLC Engineering for Architecture

Ft Lauderdale, Florida

[brian.lomel@tlc-eng.com](mailto:brian.lomel@tlc-eng.com)

Brian's years of mechanical engineering shine through his quick wit, ability to demonstrate to developers that quality building systems are worthwhile and his commitment to improving new and existing buildings, for the occupants, operators and owners. Recognized for his story-telling approach to educating and sharing information with industry partners, Brian uses his sense of humor to apply his knowledge of how buildings really operate and how building occupants do not always use the building as intended to make his points about simplicity in design and operation. Brian's ability to translate engineering jargon into business language and numbers and vice versa helps his client get the most out of their design team.



## Rachel MacCleery

Senior Vice President, Content

Urban Land Institute

Washington, DC

[Rachel.MacCleery@uli.org](mailto:Rachel.MacCleery@uli.org)

Rachel MacCleery is senior vice president at the Urban Land Institute, where she leads the organization's Building Healthy Places Initiative and other programs. Under Building Healthy Places, Ms. MacCleery is spearheading ULI's efforts to leverage the power of ULI's global networks to shape projects and places in ways that improve the health of people and communities. The Initiative is working to advance understanding of and action on connections between the built environment and health. Rachel has extensive knowledge of land use, environment and sustainability, social equity, and infrastructure policy and practice issues. Rachel has a Masters Degree in Public Administration and Urban and Regional Planning from the Woodrow Wilson School at Princeton University. She speaks Mandarin Chinese and lives in Washington DC.



## Tim McCarthy

Managing Principal

Hart Howerton

New York, New York

[tmccarthy@harthowerton.com](mailto:tmccarthy@harthowerton.com)

As Managing Principal of Hart Howerton, Tim directly engages client leadership in planning and designing market-driven solutions that produce outstanding business results. His leadership of design teams has guided the implementation of projects in nearly 20 countries across four continents. Committed to understanding how conditions in the built environment drive health and wellness-based design strategies, Tim leads the firm's research collaboration with the University of Virginia's Center for Design & Health, is an active contributor to ULI's Building Healthy Places Initiative, and is a Working Group Member for the WELL "Community Standard." A graduate of the University of Notre Dame (BArch) and the University of Pennsylvania (MArch), Tim is also a member of ULI's Global Exchange Council. His work has been published and exhibited internationally.





## Edward T. McMahon

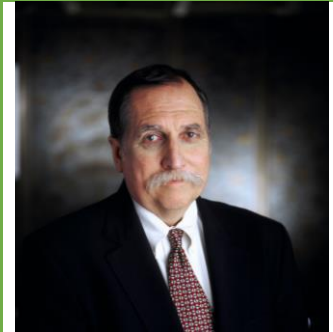
Senior Resident Fellow

Urban Land Institute

Washington, District of Columbia

[Ed.McMahon@ULI.org](mailto:Ed.McMahon@ULI.org)

As the Senior Fellow for Sustainable Development, Ed McMahon leads ULI's worldwide efforts to conduct research and educational activities related to environmentally sensitive development policies and practices. He is also a senior staff adviser for ULI's Building Healthy Places Initiative, and is a sought-after speaker and thinker on health and real estate. Before joining ULI in 2004, McMahon spent 14 years as the vice president and director of land use planning for the Conservation Fund in Arlington County, Virginia, where he helped protect more than 5 million acres of land of historic or natural significance. McMahon is also the cofounder and former president of Scenic America, a national nonprofit organization devoted to protecting America's scenic landscapes. Before that, he taught law and public policy at Georgetown University Law Center for nine years, and served in the U.S. Army, both at home and abroad. McMahon serves on several advisory boards and commissions, including the National Trust for Historic Preservation, Preservation Maryland, the Governor's Institute for Community Design, the Doris Duke Charitable Fund, and the Orton Family Foundation. He has an MA in urban studies from the University of Alabama at Birmingham and a JD from Georgetown University Law School.



## Jonathan Nettler

Senior Director

Urban Land Institute, Los Angeles

Los Angeles, California

[jonathan.nettler@uli.org](mailto:jonathan.nettler@uli.org)

Jonathan Nettler has lived and practiced in Boston, Washington D.C., San Francisco, New York, and Los Angeles on a range of project types for major public, institutional, and private developer clients including: large scale planning and urban design, waterfront and brownfield redevelopment, transit-oriented development, urban infill, campus planning, historic preservation, zoning, and design guidelines. Jonathan is a member of the American Institute of Certified Planners (AICP) and serves on the Board of Directors for the Los Angeles section of the American Planning Association (APA) as the Vice Director for Professional Development. He is also active in local volunteer organizations. Jonathan previously served as Managing Editor of Planetizen and Project Manager/Project Planner for Ehrenkrantz Eckstut & Kuhn (EE&K) Architects. He received a Master of Arts degree in Architecture from the University of California, Los Angeles and a Bachelor of Arts degree in History from Boston University.



## Matt Norris

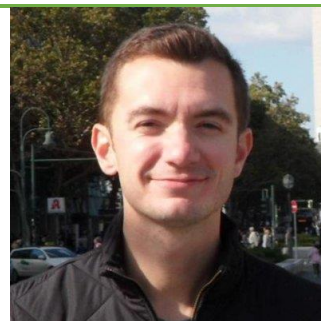
Senior Manager, Content

Urban Land Institute

Washington, DC

[matt.norris@uli.org](mailto:matt.norris@uli.org)

Matthew Norris supports the Building Healthy Places Initiative and works on projects linking health, sustainability and development. He is the primary or contributing author of several ULI publications, including "[Cultivating Development](#): Trends and Opportunities at the Intersection of Food and Real Estate" and "[Active Transportation and Real Estate](#): The Next Frontier." Matt previously worked at the Tri-State Transportation Campaign where he focused on improving access to safe, reliable and equitable modes of transportation throughout southern New Jersey and the Greater Philadelphia area. Matt earned his Master's in City and Regional Planning from Rutgers University-New Brunswick in 2010, where he focused on international development and comprehensive planning. Matt also holds a B.A. in Sociology from the University of Kansas.



## Sam Polk

Director, Education & Advisory Services

Everytable/Groceryships

Los Angeles, California

[sam@everytable.com](mailto:sam@everytable.com)

Sam is Co-founder and CEO of Everytable. He's also the founder and Executive Director of the non-profit Groceryships. Prior to becoming a social entrepreneur, Sam was a hedge fund trader on Wall Street. After noticing families in low-income areas struggling with access to healthy food, he started Groceryships, a non-profit working at the intersection of poverty and obesity. Sam's memoir, For The Love of Money, was published in July 2016 by Scribner. He is a graduate of Columbia University.



## Ashley Pollock

Masters student, Real Estate

Roosevelt University, Heller College of Business

Chicago, Illinois

[ashley.pollock97@gmail.com](mailto:ashley.pollock97@gmail.com)

As a Ronald E. McNair Scholar during her undergraduate career, Ashley was introduced to the various elements that combined make up the built environment. Ashley's personal motivators and goals have led her down the path she is currently pursuing, which involves obtaining an interdisciplinary PhD in that combines Urban Design and Planning as well as Sociology and Real Estate. These fields, in her mind, together can offer holistic solution to revitalizing dying cities and communities. As a student member of both ULI and the USGBC, Ashley has begun to lay the foundation for gaining an understanding of the current problems that stifle cities/communities and ways they are currently being solved and dealt with. A unique feature of Ashley's outlook on the world stems from her experience growing up on the southside of Chicago and witnessing the degradation of both the built environment and the people living within that environment.



## Colin Powell

Project Manager, Better Places for People

World Green Building Council

Toronto, Canada

[cpowell@worldgbc.org](mailto:cpowell@worldgbc.org)

Colin Powell is the Project Manager for Better Places for People, a WorldGBC Global Project that aims to increase the supply and demand of green buildings by focusing on improving the business case using the benefits to people's health, wellbeing, and productivity in those buildings. He manages the day-to-day operations of the project, including the working groups focused on different building typologies, health and wellbeing rating tool strategies, and putting the science of health and wellbeing in the built environment into action. Colin works closely with WorldGBC member Green Building Councils, sponsors, and other partners to present the business case for green and healthy buildings. Colin holds a PhD in Chemical Engineering from the University of Toronto, Canada, with a focus on the ultraviolet (UV) wastewater disinfection process. He also holds a BSc in Chemical Engineering and a MSc in Financial Engineering, also from the University of Toronto.



## Sandra Ramirez

Cultural Arts Director

Pacoima Beautiful

Los Angeles, California

[sramirez@pacoimabeautiful.org](mailto:sramirez@pacoimabeautiful.org)

Sandra is a Pacoima native and is deeply passionate about serving in the North East San Fernando Valley. She graduated from California State University, Northridge in 2013 with her Bachelors in Sociology then again in 2016 with her Masters of Social Work. As the Cultural Arts Director, Sandra is dedicated to bringing culturally competent, accessible, and all-inclusive arts programming to the North East San Fernando Valley. She believes art is not only a healthy outlet for self-expression, but also a healthy outlet for mental and physical healing. She is driven by the idea that as a community, we can use art to bring public awareness to environmental justice and social justice issues that impact our communities every day!



## Rodolfo Rodríguez

Masters student, Urban Planning and Public Health

University of Colorado at Denver

Denver, Colorado

[rodolfo.rodriguez@ucdenver.edu](mailto:rodolfo.rodriguez@ucdenver.edu)

Rodolfo serves as an Aide to At Large Councilwoman Robin Kniech in Denver, Colorado, where he supports the Councilwoman in spearheading policies that dissolve structural inequities across Denver. Simultaneously, Rodolfo directs a research project through The University of Colorado at Boulder that explores how to transform Denver's neighborhoods through community engagement, architecture, urban planning, enhancing public health and social equity. Over the past decade, Rodolfo has spearheaded healthy communities work across the United States and in Nicaragua and Mexico, while pursuing a "health focused" architecture track at The University of Texas, and advancing his studies in urban planning and public health at The University of Colorado.



## Sharon Roerty

Senior Program Officer

Robert Wood Johnson Foundation

Princeton, New Jersey

[sroerty@rwjf.org](mailto:sroerty@rwjf.org)

Sharon Roerty, AICP/PP/MCRP; an urban alchemist who has spent a lot of time at the intersection of health and transportation, is a Robert Wood Johnson Foundation senior program officer. She brings her expertise in built environments, transportation, and environmental and urban policy to the Foundation's efforts to improve health, equity and well-being in America. Previously, she was the CEO of the National Center for Bicycling & Walking, and directed projects at the Voorhees Transportation Center at Rutgers University and the North Jersey Transportation Planning Authority. She has been a member of numerous federal and state transportation task forces, and local planning and education committees. She holds a BS in environmental science and an MCRP in city and regional planning.



## Matt Romero, ASLA

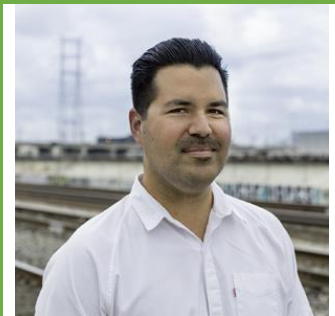
Project Designer

Studio-MLA (formerly Mia Lehrer + Associates)

Los Angeles, California

[matthew.john.romero@gmail.com](mailto:matthew.john.romero@gmail.com)

Matt Romero is a landscape designer inspired by creating transformative public places for communities to enjoy. As a student, Matt embraced the potential for landscape architecture to offer environmental justice solutions while working on a project in Santa Ana to provide public open space for an underserved community along a proposed light rail corridor. He is interested in providing sustainable, impactful environments through socially and ecologically sensitive, community-driven design. Matt's musical background facilitates attention to creative detail and a collaborative ethos that he brings to a variety of projects at Studio-MLA – from master planning and parks to mixed use residential and corporate campuses. Matt is the board chair of From Lot to Spot, a local nonprofit that provides disadvantaged communities with healthy public spaces that are the direct result of effective community engagement.





## Dominic Ruiz

Senior Analyst, Business Development

International WELL Building Institute

New York, New York

[dominic.ruiz@wellcertified.com](mailto:dominic.ruiz@wellcertified.com)

Dominic joined the International WELL Building Institute with a lifelong affinity for the built environment and a strong cross-disciplinary background encompassing community planning and design, architecture, real estate, and environmental law. Dominic began his career trajectory at the Environmental Protection Agency where he provided research assistance to regional counsel for real estate, zoning, and land-use litigation. To build upon his knowledge of real estate, Dominic joined Kansas City-based Lane4 Property Group where he was involved in the development, construction, and management of several mixed-use development projects. Following his experience at Lane4, Dominic joined Manhattan-based consulting firm, The Weitzman Group, to assist clients in determining the highest-and-best use of development projects through marketability and feasibility analysis. Dominic holds a master's degree in Regional and Community Planning from Kansas State University with an emphasis on Public Health and is an active member of the Municipal Art Society, Urban Land Institute, American Planning Association, and Contemporary Arts Council at the Museum of Modern Art.



## Elizabeth Shreeve

Principal

SWA Group

San Francisco, California

[EShreeve@SWAGroup.com](mailto:EShreeve@SWAGroup.com)

Elizabeth Shreeve is Principal of SWA, an internationally recognized landscape architecture, urban design and planning firm. Since joining SWA's Sausalito office in 1984, she has focused her practice on urban infill and revitalization, community and campus master planning, public outreach and communications. Elizabeth is currently involved with mixed use communities, hi-tech and academic campuses, and urban open space projects in the US and overseas, working closely with multi-disciplinary teams and public and private clients to translate physical, economic, and cultural factors into enduring designs and policy strategies. Elizabeth is the author of numerous professional articles including Open Spaces and Active Transportation (Urban Land, Jan/Feb 2014). She serves as assistant chair of ULI's Sustainable Development Council and chair of the San Francisco District Council's Building Healthy Places committee. For the Colorado Health Foundation, Elizabeth was a member of a 2013 Advisory Services panel in Denver's Westwood neighborhood and she is currently working with ULI on a handbook of best practices to promote health in the built environment. Elizabeth is a member of the American Institute of Certified Planners, ASLA, SPUR, and SCUP. She earned a master of landscape architecture from Harvard University Graduate School of Design and a bachelor of arts cum laude in geology from Harvard College.



## Reema Singh

Senior Associate, Content

Urban Land Institute

Washington, District of Columbia

[Reema.Singh@uli.org](mailto:Reema.Singh@uli.org)

Reema Singh supports the Building Healthy Places Initiative's projects on corridors, parks, and creative placemaking. With a background in program evaluation, Reema is committed to ensuring that BHP's initiatives are results-oriented and impactful, and that they leverage community voices and bottom-up approaches to bring equitable change during revitalization. Prior to joining ULI, Reema provided technical assistance and research support for a range of community-based health and urban education reform studies at the RAND Corporation, collaborating with local development agencies to highlight a need for sustainable built environments. Reema holds a passion for writing and a Masters in Public Policy and Management from H. John Heinz III College at Carnegie Mellon University in Pittsburgh, PA, as well as a B.A in Cultural Anthropology from the University of Rochester.



## Christopher Smith

Senior Program Officer

Colorado Health Foundation

Denver, Colorado

[CASmith@ColoradoHealth.org](mailto:CASmith@ColoradoHealth.org)

If you ask Chris' colleagues about him, you'll likely hear about two things: architecture and bicycles. A licensed architect, Chris' expertise in design and urban planning has established him as a leader at the Foundation when it comes to the impact of the built environment on health. Chris advocates for places and spaces that are intelligently-designed, vibrant, inclusive and enhance the health of the people that use them. The underpinning of Chris' philosophy is this: Everybody in Colorado, regardless of current or past circumstances, should have the same opportunity to be their healthiest self. Chris applies that philosophy daily in his work, where he utilizes the full range of Foundation resources and his experience in economic development and affordable housing to improve community health. The highlights of Chris' time at the Foundation have been working with grantees of the Colorado Fresh Food Financing Fund, helping to create the Healthy Housing Fund and serving as the Foundation's representative on the national BUILD Health Challenge initiative.



## Melani V. Smith, AICP

Adjunct Faculty, Sol Price School of Policy

University of Southern California

Los Angeles, California

[melani@nextphase.la](mailto:melani@nextphase.la)

After a career in marketing for architecture/engineering firms, Melani Smith has built and led vision-driven urban design and planning practices in Southern California, most recently in her nearly 12 years at Meléndrez in downtown Los Angeles, as Principal and President. Prior to Meléndrez, she was appointed to the Board and led the Governmental and Design Teams at The Planning Center (Placeworks), in Costa Mesa, CA. Currently, she is a planning consultant, and serves as an Adjunct Faculty Member in the Price School of Policy at the University of Southern California, where she teaches in the sustainable land use concentration. She is also an Encore Gen2Gen Fellow at Playworks in southern California, working as a part of that Non-Profit Leadership Team to ensure the long-term viability of inclusive, healthy play at southern California Playworks schools, and on strategic partnerships. Melani engages in numerous civic and professional activities including co-chairing the Central City Association's Downtown 2040 Committee in Los Angeles. She is also an active Urban Land Institute Member, currently serving as a Member of the LA District Council's Advisory Board. Melani has a Bachelor of Arts in History from UCLA, and a Master's in Urban and Regional Planning from UC Irvine.



## Mette Søs Lassen

Market Director

Ramboll Environ

Arlington, Virginia

[msl@ramboll.com](mailto:msl@ramboll.com)

Mrs. Mette S. Lassen is responsible for Market Development in North America on behalf of Ramboll-Environ and the broader Ramboll group with a particular focus on Planning and Urban Design/ Livable Cities-including Healthy Cities. Within and outside of Ramboll she provides thought leadership on issues related to urban development and resilience, and she is a frequent speaker and moderator at conferences and forums. Headquartered in Copenhagen, Denmark, Ramboll is an international engineering and design consultancy and provider of management consulting services to both the public and the private sectors. With 13.000 employees in offices across the World, Ramboll works across the markets: Buildings, Transport, Planning and Urban Design, Water, Environment and Health, Oil and Gas, Energy and Management Consulting. In her current and previous roles in Ramboll, Mrs. Lassen has led a number of strategy and business development initiatives at corporate level – most lately the development of Ramboll's approach towards sustainable and livable cities. She has also been in charge of Ramboll's global knowledge management and innovation efforts, including the development of Ramboll's digital workspace and the overall focus on technical excellence. Prior to joining the Ramboll Group she was heading the international department within Ramboll Management Consultants, and served as senior expert in the areas of public administration reform and good governance, with particular focus on anti-corruption and public procurement. She has served as team leader on numerous



assignments for a variety of clients, including the EU, the World Bank, the OECD, Danida, Sida and DFID.

## Silvia Saucedo, LEED AP

Founder and Principal

Saucedo Group

Los Angeles, California

[silviasaucedo@gmail.com](mailto:silviasaucedo@gmail.com)

Saucedo Group founder and principal Silvia Saucedo practiced law for a decade, first in private practice repping big public agencies, including the Alameda Corridor Transportation Authority and LAUSD in their eminent domain acquisitions. Her practice then shifted to CEQA and land use, repping real estate developers. She also served as the youngest police commissioner in the City of LA and the first Latina on the LA Department of Water and Power Board of Commissioners. Silvia founded Saucedo Group seven years ago. Its focus is on land use, CEQA and entitlements for private developers and property owners. She takes pride in bringing quality housing and retail to neighborhoods that have traditionally been ignored, while also advising public agencies on how to monetize their land to maximize the public services they provide. The length of the entitlement process can pose a challenge for her clients. For women going into the industry, she says creating mentors and a strong support system is key. Aside from work, she enjoys traveling, volunteering and leading a girls' camp two weekends a year.



## Stephanie Stuckey

Chief Resilience Officer

City of Atlanta

Atlanta, Georgia

[ssuckey@atlantaga.gov](mailto:ssuckey@atlantaga.gov)

Stephanie Stuckey received both her undergraduate and law degree from the University of Georgia. She graduated cum laude from the University of Georgia School of Law in 1992. After law school, she served as a public defender and then went into private practice before being elected to the Georgia General Assembly in 1999. Stephanie served as a State Representative from the Decatur area for 14 years, during which time she was a member of the Judiciary and Natural Resources Committees. She then went on to serve as Executive Director of GreenLaw, an Atlanta-based public interest law firm dedicated to giving Georgia's environment its day in court. In May 2015, she was appointed by Mayor Kasim Reed to be Director of Sustainability for the City of Atlanta. In November 2016, Stephanie was named the Chief Resilience Officer for Atlanta, working in conjunction with the Rockefeller Foundation's "100 Resilient Cities." Stephanie's legal expertise was recognized in 2011 when she was given the Outstanding Lawyer in Public Service Award by the Atlanta Bar Association. Stephanie serves on the Boards for the Green Chamber of the South, EarthShare of Georgia, and



the Olmsted Linear Parks Association. She is a member of the Institute for Georgia Environmental Leadership Class of 2013.

## Rives Taylor, FAIA, LEED AP BD+C

Regional Sustainability Leader, Principal

Gensler

Houston, Texas

[rives\\_taylor@gensler.com](mailto:rives_taylor@gensler.com)

Rives directs Gensler's Firmwide Design Performance teams and initiatives. He is a recognized global expert in resilient, high-performance and sustainable design and has been a faculty member of both Rice University and the University of Houston for 25 years. Rives has authored more than 150 articles for diverse publications like ULI's Urban Land, WIRED, Fast Company and Texas Architect and has been an invited speaker at symposiums on five continents. He founded the Houston Chapter of the USGBC and recently received the Center for Houston's Future's Impact Award. A member of the prestigious AIA Fellowship, Rives holds a B.A. in Architecture from Rice University and a Masters from MIT.



## Dana Terebessy

Manager

ULI Nashville

Nashville, Tennessee

[dana.terebessy@outlook.com](mailto:dana.terebessy@outlook.com)





## Jonathan Watts, AIA

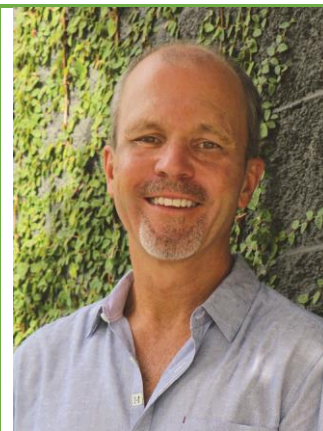
Regional Sustainability Leader, Principal

Killefer Flammang Architects

Santa Monica, California

[jonathan@kfalosangeles.com](mailto:jonathan@kfalosangeles.com)

Jonathan has been practicing architecture and land-use planning since moving from the UK to Los Angeles 30 years ago. His passion for great design and livable communities has led to work in many cities and on myriad building types including mixed-use urban infill, multi-family housing, hotel, office, retail and entertainment. Jonathan believes that design is the real value architects bring to clients and communities. Design is critical to creating beautiful, sustainable environments and to delivering highly functional, profitable projects for the clients who commission them. He designs by hand with pen and watercolors, believing it is the best way to arrive at good proportions and the right feel for the solution. He has a thorough understanding of the marketplace and the positioning of specific projects within it. Jonathan has served as Chair of two Urban Land Institute committees; he is the current Chair of the ULI's Building Healthy Places Initiative, an effort to use the ULI's global networks to improve community health through shaping projects and places. Jonathan also coaches AYSO soccer and plays squash, tennis and golf when not mountain biking.



## Marja Williams

Development Manager and Real Estate Developer

Oranje LLC

Bainbridge Island, Washington

[marja@urbanoranje.com](mailto:marja@urbanoranje.com)

With over 20 years' experience in urban planning and real estate development, as well as international natural resource management and policy, Marja has worked with a variety of private urban planning firms, public agencies, and international conservation NGOs managing land use and environmental permitting and drafting land use policy on behalf of clients ranging from residential development companies to large public utilities, including the Parliament of the European Union, Oregon Department of Environmental Quality, Bonneville Power Administration, Clark County, Washington, and the Cities of Kirkland, Kenmore and Bainbridge Island. She has worked with Forest Trends/Conservation International on the Business and Biodiversity Offsets project and with Wildlife Conservation Society on the Conservation Trust Fund Investment Strategy annual report. Marja is currently managing an integrated team to deliver a 52-unit multifamily net zero positive project and is providing predevelopment, financial and marketing consulting to a number of projects around the country. Prior to her current work, Marja Williams was a partner in Asani/PHC, and President of Asani Development Corporation, an integrated real estate development services company with interest in commercial and residential real estate, a green construction company, and clean energy projects. Marja worked as part of the team that managed the development of



the Island Gateway project, to include the Bainbridge Art Museum and the KidiMu, as well as 30,000 square feet of commercial retail and office space. She also led the team to develop the Grow Community, a net-zero energy, solar-powered residential development with 131 homes on Bainbridge Island.

## Jennifer York

Community Agriculture Program and Design Manager

Leichtag Foundation / Coastal Roots Farm

Encinitas, California

[jennifer@leichtag.org](mailto:jennifer@leichtag.org)

Jennifer York is responsible for producing client facing farm programs and design presentations as well as serving in a thought leadership role on behalf of Leichtag Foundation through its recent acquisition of Farmer D Consulting. Jennifer most recently served as the Natural Product Development Manager and Wellness Designer for Viridian. In this role, she designed lifestyle wellness programs, natural skin care products, and herbal farms for sustainable communities and resorts. Prior to that she was the RN Manager for Prime Wellness Center in Solana Beach, where she worked with a team of naturopathic doctors to help patients reach their wellness goals through custom, cutting-edge natural treatments. Jennifer holds a Bachelor of Science in Herbal Sciences from Bastyr University in WA, a Master of Science in Regenerative Studies from Cal Poly Pomona, and a Master of Science in Nursing Education from United States University. She is passionate about designing communities, farms, and gardens that support the health and well-being of people and the environment.

