



**HEALTHY**decisions  
healthy**PLACES**

Integrating health  
into community  
decision making



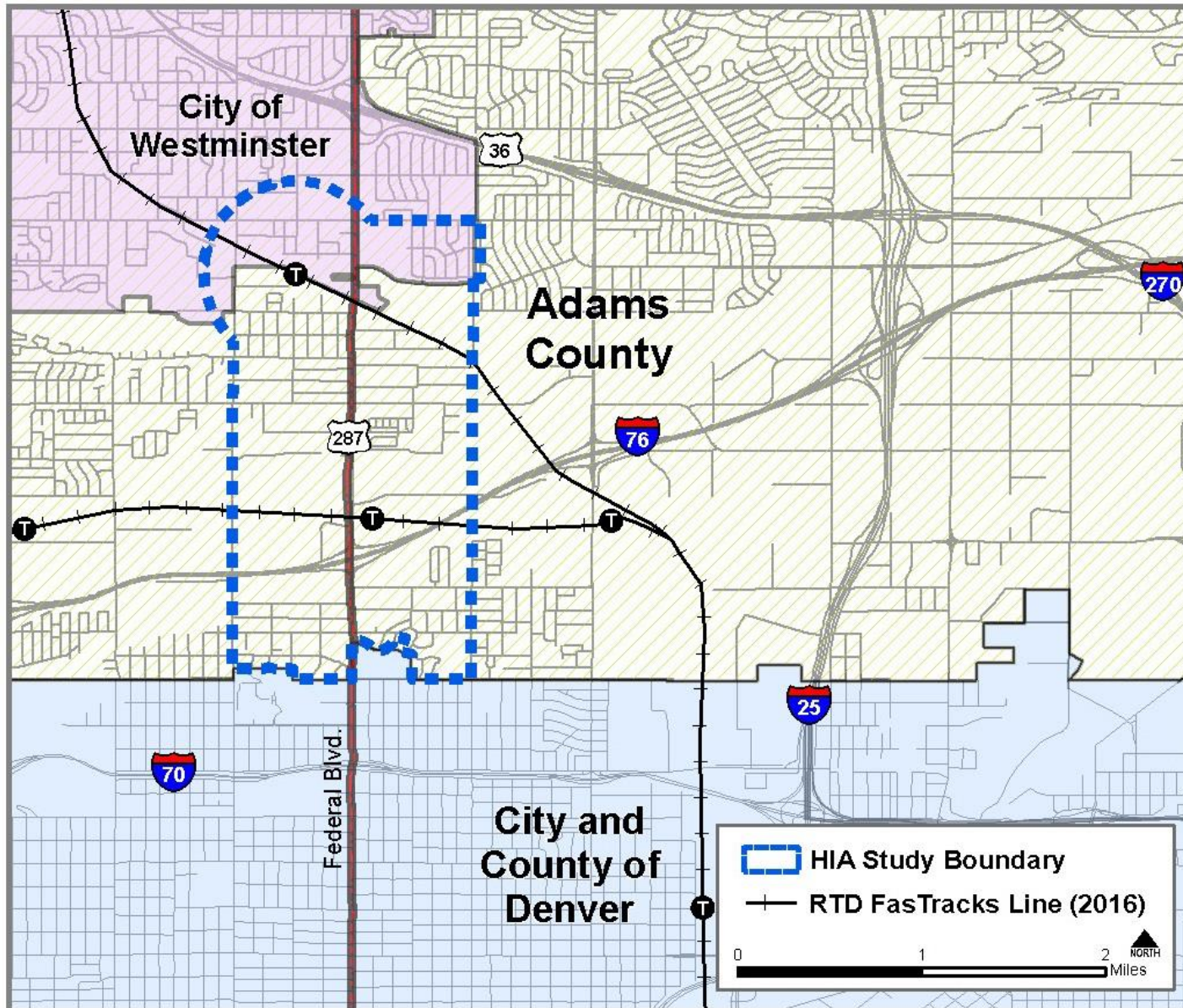
# Federal Boulevard Denver, CO

**ULI Fall Meeting  
October 26, 2016**

**Sheila Lynch  
Tri-County Health Department**

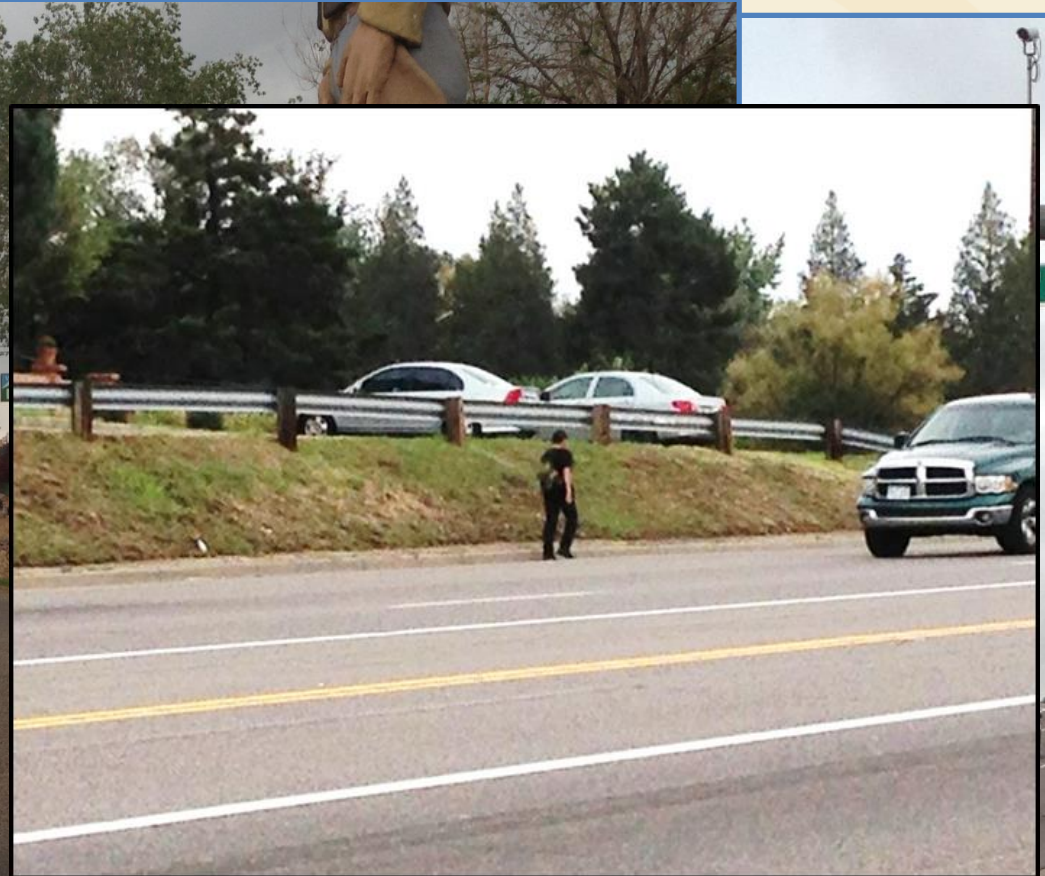


# Federal Boulevard Context

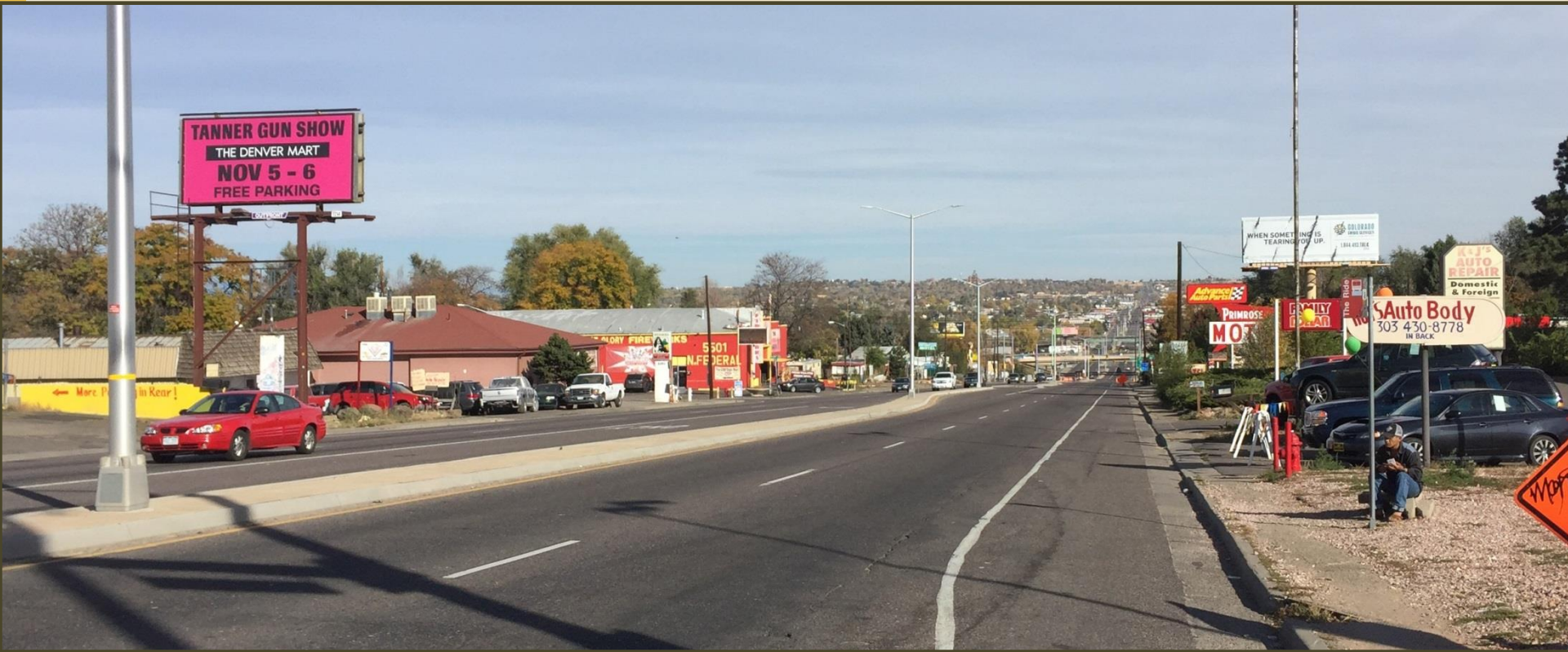




# Federal Boulevard



# Federal Blvd Healthy Corridor Process



## *Big Ideas*

Activity Nodes \* Community and Economic Development \*  
Infrastructure \* Partnerships \* Funding

# Moving Forward

- ULI Colorado
  - Convening of government partners
  - Strategies for addressing infrastructure
- Westminster Invest Health Initiative
  - Five lead agencies and community stakeholders
  - Identify and track health outcomes
  - Develop a pipeline of projects

